

# The Bimonthly Journal of the Friends of the Garden

VOL. 12, NO. 5

REACH US AT 417-891-1515

OCTOBER/NOVEMBER 2017

## Isesaki sends VIPs to tend the gardens



Above Springfield and Isesaki city council members participate in a ceremony to plant a dogwood in Isesaki. At left, members of the Isesaki Gardeners Association put the finishing touches on a bamboo fence. Below left, FOG's Lisa Bakerink gets a high five after mastering a complicated knot used to tie the fence.

You might expect activities in the Mizumoto Japanese Stroll Garden to be winding down about now. One of the most enduring sanctuaries since Nathanael Greene Park was created, the garden is about to get some extraordinary attention from a delegation from the Isesaki Gardeners Association.

Arriving Oct. 25, the delegation will include the gardeners, city officials and Isesaki citizens. Last year Springfield celebrated the 30th anniversary of our mutual Sister Cities relationship by sending a delegation to Isesaki. A dogwood tree was planted to mark the occasion. On Oct. 28, a tree will be planted in Springfield.

The Isesaki gardeners will teach and assisting with work in the Japanese Stroll



Garden. There will also be staff training session for the parks crew on authentic pruning methods.

Among the projects planned is installation of a bamboo fence in the meditation garden similar to the one

shown in the photos above along with other continuing improvements within the stroll garden.

The delegation is also looking forward to a conversation on the fate of the Azumaya installation, currently located between the Busch building and the historic Springfield City Hall. One option is to move

it to the stroll garden.

While no decision has been finalized, it was a gift from the citizens of Isesaki to Springfield. Craftsmen traveled from Isesaki to do the construction.

**VISIT FOG  
ONLINE  
CLICK HERE**



### American series

Page 7: Patrick Mureithi will perform the last in the Americana Concerts series from 2-4 p.m. on Sunday, Oct. 22.



### Profile: Dorothy Thurman

Page 2: One of the original docents in the Roston Butterfly House, Dorothy Thurman spreads goodwill wherever she volunteers.

If you're reading this newsletter online, many items are hyperlinked for further information.



# AboutFOG

Vol. 12, No. 5, OCTOBER/NOVEMBER 2017

2400 S. Scenic, Springfield, Mo. 65807

Friends of the Garden is a non-profit 501(c)(3) corporation founded in 1999 to develop the Close Memorial Gardens, located at 2400 South Scenic in Springfield, home of the Springfield/Greene County Botanical Center. We seek a dynamic relationship with other organizations working to benefit the park gardens. This newsletter is now published six times a year in print through Ozarks Living Magazine and delivered online as well to members. Past issues and other information can be found at [www.FriendsoftheGarden.org](http://www.FriendsoftheGarden.org).

## Officers:

President: Kim Chaffin

Vice-president: Gail Melgren

Secretary: Becky Morgan

Treasurer: Christy Yoakum

## Board of Directors:

**Terms ending October 2017:** Jessi Beauchamp, Susan Cardwell, Marthe Close, Dr. Pam Duitsman, Brent Bothwell-Palmer, and Christy Yoakum.

**Terms ending October 2018:** Maggie Black, Kim Chaffin, George Freeman, Gail Melgren, Becky Morgan, Heather Parker, Betty Shook and Matt Wolfel.

**Terms ending October 2019:** Roseann Bentley, Kayla Chambers, Tom Finnie, Morey Mechlin, Jessica Pearson and Don Snyder.

## Advisory Board:

Deanna Armstrong, Patrick Byers, Major Close, Christie Eden, Stan Horsch, Bob Kipfer, Bob Lovett, Chris Barnhart, Carla Beezley, Bob Childress, Jeanne Duffey and Bill Roston, Kaileen Valentine, Gabrielle White and Cindy Willis.

## Ex-Officio and Staff:

Lisa Bakerink, executive director; Katie Steinhoff Keith, Botanical Center coordinator.

## Our Mission:

To inspire the discovery, understanding and appreciation of nature, by creating and maintaining the Springfield Botanical Gardens at Nathanael Greene/Close Memorial Park and by supporting the mission of the Springfield-Greene County Botanical Center and Park Board.



## Profile: Dorothy Thurman

Dorothy Thurman has been reporting for duty in the Bill Roston Butterfly House since it opened in 2009.

Now retired as an instructor for students studying English as a second language at Missouri State University, she remains active as a community volunteer, from playing the cymbals and bells in church to observing birds and explaining the life cycle of butterflies and moths to visitors at the butterfly house.

From 3-6 p.m. most Sundays, she guides visitors through the enclosed sanctuary to observe eggs, caterpillars, chrysalises and their winged counterparts. Her passion for sharing their story is contagious.

In fact, Dorothy worked with her sister, Carolyn Doyle, to create a new butterfly house in Columbia that opened this past summer on a limited basis.

"She is so knowledgeable, so kind and involved," says Lisa Bakerink, whose passion for monarch and other butterflies goes back years as well.

"She and Kevin Firth are the people we turn to every year to train new docents."

Dorothy also records the number of visitors and keeps track of volunteer hours. But that's not all.

"Dorothy has been recording information about the birds in the park for the past decade," says Katie Keith, botanical center coordinator. "She has seen how populations have changed as gardens develop, areas are cleared and as gardens have matured."

This summer, Dorothy also was extremely valuable for species verification on butterflies in the Kickapoo Prairie Garden as helped with a master's thesis project.

Together with Betty Johnson, another FOG and Audubon Society volunteer, the two also look after bluebird houses (see photo above).

"I really appreciate Dorothy's willingness to create a special experience for our community during the recent solar

eclipse," adds Katie. "She led a naturalist walk around the park and had the perfect set of eyes and ears to help explain what the wildlife were doing under this unusual phenomenon," Katie recalls. "She reported that the birds and fish came to the surface of Lake Drummond, cicada sounds were loud and robins were very active near totality."



Dorothy and friends show their haul after a cleanup at McDaniel Lake. She also performs in the bell choir at her church.

# Garden Notes

from your friends



## 2017 Taste of Tlaquepaque will feature live Mariachi music of national holiday

The Sister Cities Association of Springfield will again present "A Taste of Tlaquepaque" on Friday, Oct. 13, this time at the Oasis Convention Center, 2546 N. Glenstone Ave. in Springfield.

This annual event is a celebration of Mexican culture and Springfield's 15-year relationship with Tlaquepaque in the State of Jalisco, Mexico.

Libations will be available beginning at 6 p.m., with dinner at 7 p.m.

Dinner will feature live mariachi music from Springfield's sister city.

Joining them will be Paco Padilla, internationally known folk singer and one of the first musicians to embrace the "New Song Movement" of neighboring Guadalajara, capital of Jalisco, Mexico. He has received numerous awards, including the medal "Francisco Medina Ascencio" in 1997, the State Prize.

Musician friends from Tlaquepaque will provide live mu

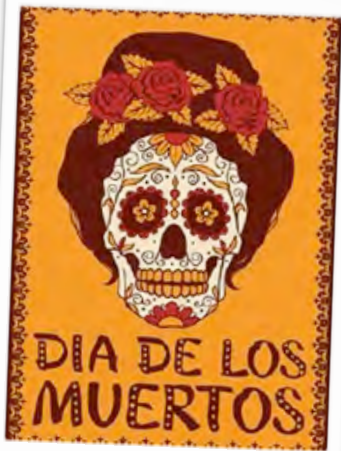
This year's theme is a respectful celebration of Dia De Los Muertos, a Mexican holiday which translates to "Day of the Dead." It is a national holiday to venerate friends and family members who have died, and to help support their spiritual journey.

Individual tickets are \$150 (\$1,000 for a table of eight). To purchase tickets, tables, or sponsorships or for more information, please contact Cindy Jobe at

**CJobe@SpringfieldMo.gov** or 417-864-1191.



A poster for "Day of the Dead" is actually a national holiday to honor lost family and friends with music and celebration.



## From the President:

### Sometimes it's the little things

We are just a few weeks past the great solar eclipse of 2017. It was a grand moment for us to stop and reflect on matters other than ourselves and our burdens. I know this rare natural phenomenon caught the attention of nearly all of us, nature lovers or not. This awesome show in the sky demanded that we stop and take notice.

But what about the smaller examples of pure beauty and diversion that surround us everyday? If we pause to look around us, it is easy to see what I am talking about. The Springfield Botanical Gardens offer us a bounty of nature's slideshows going on everyday.

This time of year, the Kickapoo Edge Prairie displays these small wonders. When first glancing at the prairie garden, your mind might be tricked into thinking that it is just nature gone wild. But take a closer look. Among the tall prairie grasses you will find eye-catching shows of color and design. The Purple Poppy Mallow with its unmatched saturated magenta hue and the Passion Flower with its exotic style are just two examples of nature's gifts quietly and patiently waiting for us to take notice. Literally dozens of butterfly varieties are breeding the next generation of their species.

Untamed as this garden is, it requires careful maintenance by the group of passionate volunteers so that visitors can observe nature as it was when Springfield was just becoming a place on the map.

If you don't make it over to the prairie garden often, I highly recommend you take the time in the next few weeks. You won't be disappointed.

The Butterfly Garden and the Butterfly House are a well thought out and planned production of nature's display. The Garden is an explosion of color from afar, but when you look closer, the small wonders are magnified. The beauty is one thing, but consider that this collection of host plants is carefully chosen to create an inviting habitat to host yet another wonder of nature – the pollinator. Between the butterflies fluttering from flower to flower, the bees busy at work doing their thing, and the occasional purposeful hummingbird, we have created a sanctuary that helps sustain these important pollinators. It is often called a living classroom that can teach us the essential relationships we depend on for survival.

If you ever need a quick way to step into another world, make a trip to the Bill Roston Native Butterfly House. This modest greenhouse has created the conditions, food and expertise required to showcase metamorphosis. This display of the life phases of our native species is mind blowing to a novice like me. The caterpillars are strange and alien, the chrysalises are nearly mystical, and those delicate butterflies help us transform the spirit.

Yes, the eclipse was something to behold. I was so thankful to have something to focus on other than world events and the daily grind. However, it occurred to me that we have beautiful diversions around us all of the time – you just have to notice. The Springfield Botanical Garden is full of small little wonders to take us away – ready when you are!

*Kim Chaffin is president of Friends of the Garden. Reach her by e-mail at [Info@FriendsOfTheGarden.org](mailto:Info@FriendsOfTheGarden.org), and follow us on Facebook at Friends of the Garden, on Instagram@Springfield Botanical Gardens, or on Twitter @Friends\_Garden.*



**Kim Chaffin**

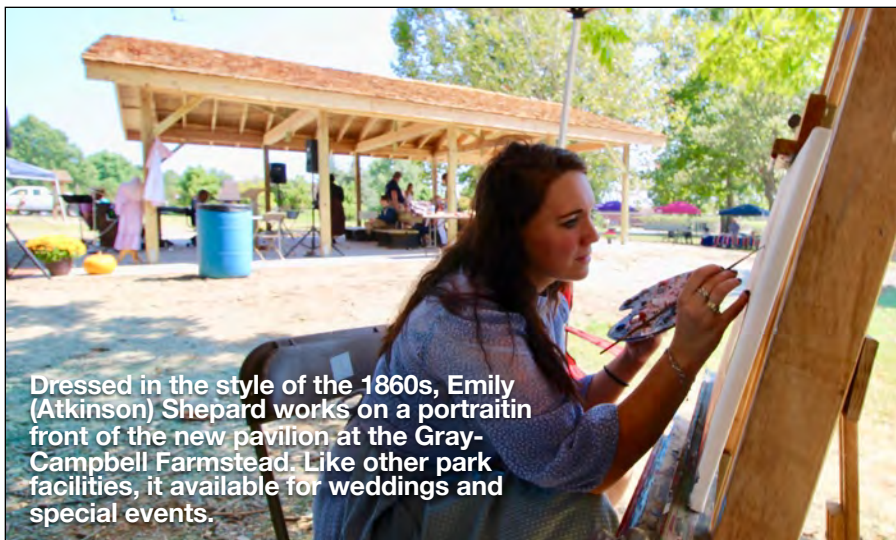


## Gray-Campbell Farmstead dedicates new pavilion honoring history of the Ozarks

The 2017 Gray/Campbell Farmstead Expo offers a weekend of appreciation once a year for the old ways – and perhaps to offer some valuable insights for future generations.

Now a new pavilion is in place for entertainment, weddings and special events. Utilities are available along with optional seating and picnic tables for a rental fee.

Activities at Gray-Campbell Farmstead center around the recreated one-room Liberty School and other authentic buildings that were crucial to the settlement of Springfield, include the oldest home in the area. It's obvious that very little came easy in the 1860s, but our ancestors were often ingenious.



Dressed in the style of the 1860s, Emily (Atkinson) Shepard works on a portrait in front of the new pavilion at the Gray-Campbell Farmstead. Like other park facilities, it is available for weddings and special events.

Liberty School is open by appointment to visitors and to fifth grade classes in the Ozarks to experience the one-room school that educated past generations.

The farmstead is adjacent to the Kickapoo Edge Prairie, a recreated prairie garden that John Polk Campbell's family would have

encountered on their journey. And let us not forget that fully half of the settlement were slaves, responsible for much of the construction and farming at the original homestead.

From the 1850's to the 1950's, it was in active use until it was moved in 1984 to make way for the James River Expressway.

## New and renewing\* members, memorials, tributes, garden donations

### Membership

Adams, Jodie & Reid, Linda\*  
Archer, John\*  
Beckner, Dan & Zoe\*  
Buffington, Vicki\*  
Chiswell, Arlene\*  
Cooper, Nancy\*  
Dixon, Jennifer\*  
Duncan, Linda\*  
Garrett, Patty\*  
Holdren, Karolyn\*  
Holman, Ralph\*  
Holmes, Mary Lynn\*  
Horton, Jan\*  
Hyder-Stevens, Stephanie\*  
Johnson, Richard & Shae\*  
Johnston, Debra\*  
Karanikas, Marianthe  
Kauffman, Rick & Kathy\*  
Kauffman, Travis  
Lee, Peggy Day\*  
McQuillen, Elaine  
Mee, Virginia\*  
Moore, Clarissa\*  
Moran, Jill & Edward\*  
Moyer, Roberta & James\*  
Owens, Anna\*  
Pettit, N. J.\*

Placzek, Ellen\*  
Porterfield, Coy & Audrey\*  
Pyle, Susan\*  
Rice, Julie M.\*  
Rosenkoetter, Marcie\*  
Shook, Betty\*  
Squires, Patty\*  
Stainbrook, Don & Judith  
Taylor, Linda  
Van Weelden, Patty\*  
Viner, Rachel  
Walker, Mary\*

### Garden Friends

Anderson, Janet & Jim\*  
Freeman, George & Nancy\*  
Myron Royce Gardens Inc.\*  
Springfield Watergarden Society\*

### Garden Contributors

Selby, Clark & Karen\*

### Tribute Brick Pavers

Brazeal, Dakota  
Cherry Court Garden Club

Close, Marthe  
Dick, Ted & Debbie  
Ever Green Garden Club  
Federated Garden Club of Missouri  
FGCM SW District  
Lamar, Rick  
Williams, Gee & Stiles, Jim

### Tribute Shrubs/Trees

Davis, Teresa  
Hukriede, Jana  
Mason, Julie

### Restricted Donations/Gifts

Cardwell, Dan & Susan  
Federated Garden Club of Missouri  
Finnie, Tom  
Hogan Title Land Company  
Mauldin, Jim  
Parrish, Stan & Susan

### Memorial Donations for Sara Katherine Johnson

Anandarajah, Raj & Krish

Barber, Jay M  
Bolli, Mary Ann  
Davison, Cary & Mike  
Dunlop, Vicki  
Gibson, Kathryn  
Hinch, Steven & Virginia  
Justice, Marcia W  
Lopinot, Neal & Sharon  
Marinec, R Charles  
Miller, Nancy & Dace  
Pease, Arthur M.  
Rosenkoetter, Marcie  
Shoemaker, Phyllis  
Shook, Betty  
Siefert, Matthew  
Stahlman, Charles  
Stahlman, Sara B.

### Memorial Donations for Sterling Macer

Mauldin, Jim

### Memorial Donations for Claudine Arend Cox

Mauldin, Jim

### Memorial Donations for Laura Wells

Ballard, Jack & Marilys

Bates, Cindy  
Bowen, Joan & Earl  
Whitman  
Canlas, Mario & Emily  
Dawson, Margaret E.  
Elliott, Sam  
Neff, Sheila  
Simpkins, Wanda  
Spiwa, Kara  
Wilson, Nancy

### Memorial Donations for Claudette Millstead

Butler, Kathy  
Dick, Ted & Debbie  
Joyner, Rita  
Junod, Forrest  
Kvasnicka, Judith  
Lind, Richard  
Marshall, Mary Jo  
Murney, Donna  
Schaefer, Phil & Danette  
Springfield Neurological Institute LLC  
The Lawrence Group  
Thompson, Roland & Linda





Pioneer Exposition looks forward after 26 years

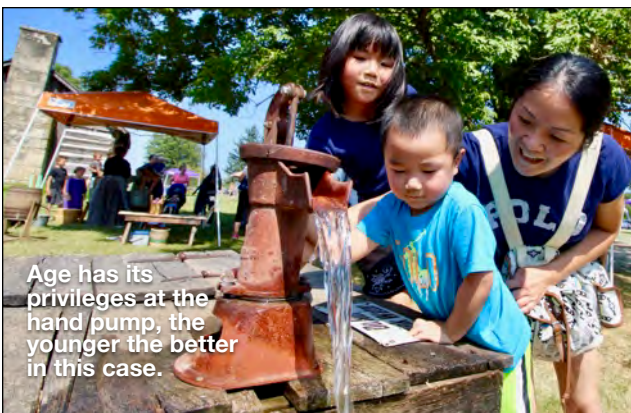
# Gray-Campbell Farmstead's new pavilion



Above, gunny sack races are the latest old-time game for kids, while below,



Laundry gets a thorough washing on a washboard and at least one run through the wringer before being hung out in open air to dry. At right, two young pioneers take turns stirring apple butter over a campfire.

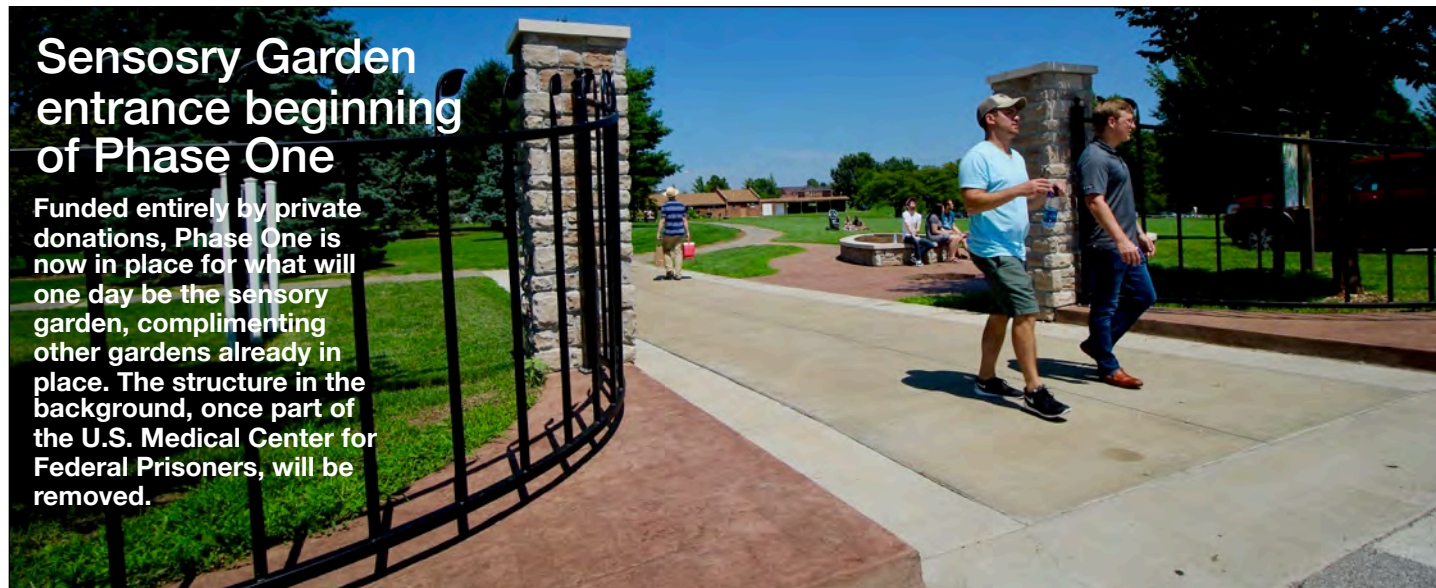


Age has its privileges at the hand pump, the younger the better in this case.



# Sensory Garden entrance beginning of Phase One

Funded entirely by private donations, Phase One is now in place for what will one day be the sensory garden, complimenting other gardens already in place. The structure in the background, once part of the U.S. Medical Center for Federal Prisoners, will be removed.



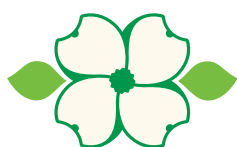
If you've visited the botanical gardens recently, you probably noticed the installation of an entrance to the Sensory Garden, one of the largest projects undertaken since construction of the botanical center in 2010.

Phase One will also include a fountain, raised bed and additional walkways in what will eventually be an extensive garden to be enjoyed by those with limited mobility or opportunity to experience traditional

gardens. The new garden will also feature an outdoor kitchen and classroom setting.

If you or someone you know would like more information on plans for the sensory garden, please contact the Lisa Bakerink, executive director of Friends of the Garden.

Newsletter produced by FOG board member George Freeman, Editor of Ozarks Living Magazine and [OzarksLiving.com](http://OzarksLiving.com).



## Friends OF THE GARDEN

*Bringing People, Nature & Gardens Together*

We are individuals, families and businesses who support Springfield Botanical Gardens in its mission to provide outstanding botanical, horticultural, environmental and educational opportunities for people of all ages. Anyone with an interest in nature who wishes to support the progress of the gardens is encouraged to join. **As a member, you're a partner in the future of the gardens.** As a volunteer nonprofit organization, we rely on membership and donations to make the gardens and FOG activities possible.

Join online at  
[friendsofthegarden.org](http://friendsofthegarden.org)!



### Membership Benefits

- Subscription to Ozarks Living Magazine, which includes the FOG Newsletter
- Complimentary admission to the Mizumoto Japanese Stroll Garden (excluding the Fall Festival)
- Discounts at the Botanical Center gift shop and select local businesses
- Free or reduced admission to American Horticultural Society member gardens across the country
- Invitations to special gardening events
- Volunteering and education opportunities
- Donations are fully tax deductible

### I would like to volunteer:

- ☐ in the gardens at the park
- ☐ in the FOG office
- ☐ in the Botanical Center
- ☐ at events: FOG booth
- ☐ at events: activities
- ☐ at children's activities
- ☐ as a Butterfly House docent
- ☐ in marketing/development
- ☐ in hardscaping/construction
- ☐ tell me what you need!
- ☐ I have a special talent:

### Membership Levels

- ☐ \$35—Individual
- ☐ \$45—Individual Plus  
(Individual plus guest)
- ☐ \$50—Family  
(Three or more)
- ☐ \$100—Garden Friend  
(Includes the option to give one additional gift membership)
- ☐ \$250—Garden Contributor  
(Includes the option to give three additional gift membership)
- ☐ \$500—Garden Ambassador  
(Includes the option to give six additional gift memberships)

### Member Information

YOUR NAME: .....  
 ADDRESS: .....  
 CITY: .....  
 STATE: ..... ZIP: .....  
 EMAIL: .....  
 PHONE: .....

☐ This membership is a gift: ☐ Wedding ☐ Birthday ☐ Holiday ☐ Gift Renewal  
☐ In honor of: ..... ☐ Other: .....

RECIPIENT'S NAME: .....  
 RECIPIENT'S ADDRESS: .....  
 CITY: .....  
 STATE: ..... ZIP: .....  
 EMAIL: .....  
 PHONE: .....

Please send form and mail check payable to: Friends of the Garden  
 2400 S. Scenic Ave., Springfield, MO 65807  
 Questions? Call (417) 874-2952, email [info@friendsofthegarden.org](mailto:info@friendsofthegarden.org) or go to [friendsofthegarden.org](http://friendsofthegarden.org)

### Corporate Sponsorships

Individual gardens, features and attractions are available for corporate sponsorship. Please inquire at [info@friendsofthegarden.org](mailto:info@friendsofthegarden.org) for more information.

# Sustainability isn't just about the gardens, it's also about our visitors

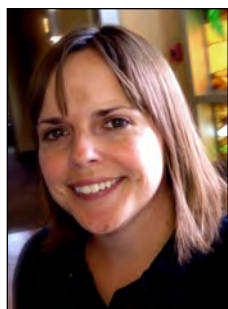
Sustainable Gardens are our goal, and likely a goal for your garden too. These words combined conjure up this beautiful, clean, almost magically surreal location that you can enjoy from a bench with a glass of lemonade, because everything is always in its place. The reality is, especially in a public garden, human visitors and their domesticated friends, all sorts of wildlife, plus environmental conditions and plant pests and diseases are constantly making an impact on the garden.

Constant attention is required to combat trouble before it becomes a bigger problem, making repairs to worn pathways, replanting flowers, reapplying mulch and even making signs to remind people about public garden etiquette.

Garden leadership can only do so much toward choosing the best plants and building materials to be sustainable through our extreme seasons and high use – the rest is up to you.

Let me try to explain how your complete and holistic support of all the partner organizations, participation in classes, renting garden space, shopping in the Botanical Boutique Gift Shop contributes into the sustainability of the gardens.

When the concept for a Botanical Center was coming together under the 2006 Parks-Stormwater special tax, the Springfield-Greene County Parks department knew it needed partners to make this attraction work. The University of Missouri, Greene County Extension Service was the ideal partner for bringing research-based education to the citizens in so many quality of life subjects beyond typical parks recreation.



## A Parks Perspective:

Katie Keith

Master Gardeners, a program administered through MU Extension, were already rooted at this address in their Demonstration Gardens. When you participate, you encourage the need for information concerning gardening, health and nutrition, small business planning and human development.

Class fees help keep the office running; so do soil tests, support from Greene County and the university. Just think, the flagship university in Missouri infuses this space with \$1.5 million in specialists and program support if you will participate.

If you participate in Master Gardeners, you also agree to volunteer your time in some capacity, usually in the gardens or information hotline room. But there are many ways to volunteer.

Friends of the Garden was created to be the primary fundraiser for building and continuing to maintain the gardens.

Sources of funds that keep the gardens going include memberships, memorial gifts and donations, grants as well as garden rental revenue and butterfly house tours.

When you, your organization or business rent a garden space for an event or professional photography shoot, the funds collected through your reservation or photo pass are split between Parks and FOG. Parks helps with security, maintenance, utilities and FOG helps keep the gardens maintained with fresh plantings and empowering volunteers to serve. If you like the flowers and pretty backdrops, please support us.

While you can see the butterfly house for free, if you organize a field trip, we ask for \$3 per student or visitor for a guided program. The funds all go to help pay for plants that the caterpillars eat, netting for the house, and sometimes for additional staff.

Springfield Sister Cities Association is another permanent tenant at the Botanical Center that has connected us with cultures in Mexico and Japan. The Mizumoto Japanese Stroll Garden and the Peace through People pavilion are two attractions that are substantially supported by this organization and bring culture to the park. On Sunday Oct. 22, from 2-4 p.m., do not miss the benefit concert by Patrick Mureithi, a native of Kenya. Donations collected at this event will go to make the Kickapoo Edge Prairie more accessible.

Shopping inside the Botanical Center is often a great value as it is tax-free shop and FOG members receive a 10 percent discount. Revenue generated at this site helps maintain the buildings and staff for keeping attractions open.

Professional staff are important for recognizing problems and responding early to needs for maintenance, identifying all the flora and fauna, bringing new exhibits and accountability. The next time you are trying to come up with a gift or a party location or just a place to spend time, I hope you will consider supporting the partners that contribute to the success of a sustainable botanical garden.

*Katie Keith is coordinator of the Springfield Botanical Center at the*



**Patrick Mureithi in the recording studio.**

**Patrick Mureithi is founder of The Mankind Project. He is a videographer and instructor at Drury University whose musical talents take center stage often in the Ozarks. He will perform original and traditional Americana and blues during the last in the Americana Concerts series, from 2-4 p.m. on Sunday, Oct. 22, in the new Peace Through People Pavilion.**

## Tell a teacher:

**On Thursday, Oct. 19, we will be host of "Road Map to Learning," especially for teachers, at the Botanical Center from 4-6 p.m. Reserve your space by visiting [Parkboard.org](http://Parkboard.org) and "Register Now" or call me at the number below by Oct. 16.**



# Take the right turn to get to enjoy the Springfield Botanical Gardens



## Save the Date: Happenings of interest to Ozarks gardeners\*

- **Sept. 30:** 2-4 p.m., Monarch Tagging at the butterfly house.
- **Oct 1:** 10 a.m.-6 p.m.; last day of Native Butterfly House operation.
- **Oct. 6:** 6-9 p.m.; Romance in the Garden Moonlight Masquerade; Mizumoto Japanese Stroll Garden.
- **Oct. 7:** 5-7 p.m., Twilight Masquerade for Families; Mizumoto Japanese Stroll Garden.
- **Oct. 12:** 5-6:30 p.m. Friends of the Garden board meets.
- **Oct 12:** 6- 8 p.m., Friends of Tlaquepaque, Oasis Inn Convention Center, 2546 N. Glenstone Ave. in Springfield. Details for this event are on page 3.
- **Oct. 19:** 4-6 p.m. "Road Map to Learning," especially for teachers (please see page 7).
- **Oct 22:** 2-4 p.m. Last Americana Concert Series; featuring Patrick Mureithi, a native of Nairobi, Kenya, performing original song and traditional Americana and blues.
- **Oct. 25-30:** Visit by delegation of the Isesaki Gardeners Association, representatives of city government and private citizens, to celebrate the 30th anniversary of the Sister Cities relationship between Isesaki and Springfield.
- **Nov.9:** 5-6:30 p.m. Friends of the Garden board meets.
- **Dec. 2:** 1-3 p.m., Christmas at the Gray-Campbell Farmstead, la fund-raising event;
- Unless otherwise noted, all events are at the Springfield Botanical Center. Reach us with your garden-related events by e-mail at [News@FriendsOfTheGarden.org](mailto:News@FriendsOfTheGarden.org), or find us on Facebook and Twitter, or at [www.fogcalendar.com](http://www.fogcalendar.com). On each Friday and Monday, "Springfield Botanical Gardens News" helps keep you informed on what's happening around the Springfield-Greene County Botanical Center & Gardens. To receive the latest news, send your e-mail address to [Info@FriendsOfTheGarden.org](mailto:Info@FriendsOfTheGarden.org). Friends of the Garden's "Daily News FOG Blog" is at [www.friendsofthegarden.org](http://www.friendsofthegarden.org).

Aboretum	79	Hosta Garden	35
Asiatic Lily Garden	44	Iris Garden	41
Audubon Trail & Bubble	82	Magnolia Garden	53
Azalea Garden	75	Master Gardener Demonstration Gardens	4
Blue Star Memorial Garden	29	Meditation Garden	96
Botanical Center Gardens	1	Mizumoto Japanese Stroll Garden	78
Butterfly Garden	45	Mosaic Garden	32
Butterfly House	46	Native Shrub Garden	52
Butterfly Windrider Garden	47	Ornamental Grasses Garden	39
Caterpillar Café Garden	98	Peace Garden	71
Columbine Garden	48	Peony Garden	43
Daffodil Bulb Garden	51	Rain Garden	50
Daylily Garden	42	Rebud Garden	55
Dogwood Garden	56	River of Mums Garden	100
Dwarf Conifer Garden	62	Rose Garden	33
Edge of the Kickapoo Prairie Garden	58	Succulent Garden	40
English Garden	37	Viburnum Garden	30
Ethnic Life Stories Trail of Trees	81	Vietnam Memorial Garden	99
Federated Garden Clubs Perennial Garden	72	White Garden	34
Fern & Moss Garden	70	Wildflower Garden	49
Flowering Shrub Garden	31	Winter Garden	28
Founders' Garden	60	Woodland Garden	66
Gray/Campbell Heritage Garden	77		

At right is a list of our gardens, coincides with a "Guide By Cell" number. An example is the Dr. Bill Roston Butterfly House 46#. As you tour the gardens, or wherever you may be, you may call 417-213-3016 and enter the garden guide number following the name of the garden shown at right, followed by the # sign, for a brief overview of each of the gardens. Enjoy.