

# The Bimonthly Journal of the Friends of the Garden

VOL. 12, NO. 1

REACH US AT 417-891-1515

FEBRUARY/MARCH 2017

## Botanical Gardens receive national accreditation through ArbNet.org

Now three decades old, the Mizumoto Japanese Stroll Garden features hundreds of trees and shrubs; ponds and statuary in a serene setting, one of the most popular destinations in Springfield. This April, the garden will open seven days a week.

The Springfield Botanical Gardens has earned national acclaim for its gardens, including accreditation by the Commission for Accreditation of Park and Recreation Agency (CAPRA) announced in the December newsletter. Three individual gardens have recognized nationally.

Most recently, our gardens have earned recognition through the ArbNet Arboretum Accreditation Program, received by only 159 gardens in the entire world, having achieved standards of professional practices for arboretums.

Impressively, six arboretums in Missouri are accredited by [ArbNet.org](http://ArbNet.org), the only global initiative that officially recognizes arboretums at various levels of development, capacity, and professionalism.

Our gardens are ranked Level II out of four levels, based on the diversity of trees, the number of staff and volunteers and our commitment to public programming and education, research and conservation.

In May, 2016, we were awarded a TRIM (Tree Resource Improvement and Maintenance) grant from the Missouri Department of Conservation that provided the necessary tree inventory/ management software to document the collection. View it at [SpringfieldParksMo.MyTreekeeper.com](http://SpringfieldParksMo.MyTreekeeper.com).

The Springfield-Greene County Park Board founded the 112-acre Nathanael Greene/Close Memorial Park in 1976. Since the 1980s, the parks (actually two side by side) have featured themed gardens and botanical collections. Tree varieties include indigenous hackberry, redbud, Osage orange, shagbark hickory, black walnut, black cherry and oak.

The Mizumoto Japanese Stroll Garden, one of our most mature gardens, was established in 1985. It is home to less common trees, including weeping Norway spruce, weeping white pine, blue Atlas cedar and several species of non-native cherry and Japanese maple trees.

Built and maintained in partnership with the Friends of the Garden, dogwood, redbud,

viburnum, dwarf conifer, magnolia, black gum, maple as well as other trees and woody plants have been added.

Nationally recognized themed gardens include the American Hemerocallis Society Certified Display Garden (daylilies) and American Hosta Society Certified Display Garden. The gardens are also recognized by the American Rose Society and the North American Japanese Garden Association.

"Going through the arboretum accreditation process helped us identify our strengths and weaknesses as a community asset, and allows us to compare ourselves with peer institutions across the country," explains Katie Keith, Botanical Center Coordinator for the Springfield-Greene County Park Board. "As part of a CAPRA-accredited park system, there is a culture of excellence across the park facilities in Springfield. I hope the ArbNet accreditation will be a source of pride for our garden supporters and serve as an additional tool for executing the park's master plan."

**VISIT FOG  
ONLINE  
CLICK HERE**



### Profile: Tom & Michael

**Page 2:** Two presidents working together for 'Peace Through People.'



### Sensory Garden

**Page 6 & 7:** Work has begun on Phase One of our newest garden. See graphic on page 7.

If you're reading this newsletter online, many items are hyperlinked for further information.

# AboutFOG

Vol. 12, No. 1, February/March 2017

2400 S. Scenic, Springfield, Mo. 65807

Friends of the Garden is a non-profit 501(c)(3) corporation founded in 1999 to develop the Close Memorial Gardens, located at 2400 South Scenic in Springfield, home of the Springfield/Greene County Botanical Center. We seek a dynamic relationship with other organizations working to benefit the park gardens. This newsletter is now published six times a year in print through Ozarks Living Magazine and delivered online as well to members. Past issues and other information can be found at [www.FriendsoftheGarden.org](http://www.FriendsoftheGarden.org).

## Officers:

President: Kim Chaffin

Vice-president: Gail Melgren

Secretary: Becky Morgan

Treasurer: Christy Yoakum

## Board of Directors:

**Terms ending October 2017:** Jessi Beauchamp, Brent Bothwell-Palmer, Susan Cardwell, Marthe Close, Dr. Pam Duitsman, Avis Holloway, and Christy Yoakum.

**Terms ending October 2018:** Maggie Black, Kim Chaffin, George Freeman, Gail Melgren, Becky Morgan, Heather Parker, Betty Shook and Matt Wolfel.

**Terms ending October 2019:** Roseann Bentley, Kayla Chambers, Tom Finnie, Morey Mechlin Jessica Pearson and Don Snyder.

## Advisory Board:

Deanna Armstrong, Patrick Byers, Major Close, Christie Eden, Stan Horsch, Bob Kipfer, Bob Lovett, Chris Barnhart, Carla Beezley, Bob Childress, Jeanne Duffey and Bill Roston, Kauleen Volentine, Gabrielle White and Cindy Willis.

## Ex-Officio and Staff:

Lisa Bakerink, Executive Director;  
Barbara Lucks, Volunteer Coordinator;  
Katie Steinhoff Keith, Botanical Center Coordinator; Peter Longley, Botanical Center Horticultural Interpreter.

## Our Mission:

To inspire the discovery, understanding and appreciation of nature, by creating and maintaining the Springfield Botanical Gardens at Nathanael Greene/Close Memorial Park and by supporting the mission of the Springfield-Greene County Botanical Center and Park Board.



## Tom Finnie & Michael Thomas

Friends of the Garden and Springfield Sister Cities Association are growing and working together. These days our two directors, Lisa Bakerink and Cindy Jobe, office across the hall in the botanical center.

Our two organizations are increasingly working with mutual goals in mind, such as the new *Peace Through People Pavilion*, a well-equipped performance venue suitable for concerts and special events in a garden setting, facing a landscaped natural amphitheater that can accommodate about 500 patrons using lawn chairs or blanket seating. Stage lighting and sound are available as well.

It is adjacent to the Kay Cummins Finnie Memorial Dogwood Garden and just east of the botanical center. It will be dedicated on April 22 in conjunction with the annual Kite Festival.

"Tom Finnie has done so much for this city, for Sister Cities and as president of Friends of the Garden," says Michael Thomas, retired from Drury University after 30 years, the last 12 as director of international studies. His tenure as president of Sister Cities coincided with Tom Finnie's as president of Friends of the Garden. Both Tom and Kay completed Master Gardener training as well.

The Peace Through People Pavilion is available for community and corporate events developed by SSCA, FOG and the Park Board, as well as family events.



The first performance at the pavilion celebrated the international friendship between Tlaquepaque, Mexico, and Springfield at a joint member appreciation concert and banquet in October 2016.

"Tom's effective leadership style, strategic planning, and ability to mobilize the right people for any task have been instrumental in guiding FOG into its 16th year," says Lisa Bakerink, executive director of FOG.

The pavilion's name reflects the mission of the Springfield Sister Cities Association to advance awareness and understanding of many cultures, through avenues such as performance, art and music. It was funded by private donations, the Springfield Sister Cities Association, Friends of the Garden, and a \$5,000 grant administered by the Springfield Regional Arts Council on behalf of the Community Foundation of the Ozarks. The Springfield-Greene County Park Board provided in-kind services such as site preparation and Conco Quarries contributed concrete for the project.

The Tom and Kay Finnie Endowment Fund has been established at the CFO

# Garden Notes

from your friends



## Officers, Jessica Pearson begin 2017 terms

Officers, including one more new board member, have taken office for 2017.

President: **Kim Chaffin**

Vice-president: **Gail Melgren**

Secretary: **Becky Morgan**

Treasurer: **Christy Yoakum**

**Jessica Pearson** was elected to a three-year term during the annual meeting on Jan. 12. She joins newly elected board members **Roseann Bentley, Kayla Chambers, Tom Finnie, Morey Mechlin and Don Snyder**.

Tom Finnie and Don Snyder are beginning their second terms. Mike Carlie has since resigned because of a conflict in meeting times with another organization in which he plays a key role.

## Thinking globally, working locally in pursuit of 'Peace Through People'

Friends of the Garden and the Springfield Sister Cities Association are jointly working around the Springfield Botanical Gardens and around the globe.

Maintenance and beautification of the Mizumoto Japanese Stroll Garden has long been a joint venture with FOG, Parks staff, and Sister Cities with the later contributing \$25,000 in Fall Festival proceeds just this year back to invest in the 7.5 acre stroll garden.

Sister Cities also contributed to the new Peace Through People Pavilion located in the Dogwood Garden.

On April 22, when the facility is dedicated, we hope to unveil a new sculpture by International artist Rodo Padilla, a friend from Springfield's sister city, Tlaquepaque, Jalisco, Mexico. This sculpture will embody the Sister Cities mission of Peace Through People and will be funded through this organization as well.

Peace through people is passed from one person to the next as our members from both FOG and Sister Cities have joined together to visit Tlaquepaque, Jalisco, Mexico and Isesaki, Gunma, Japan.

One of these visitors summed up her experience this way: "Once you've lived, laughed, and been included around the family dinner table with someone from another country, you realize how similar they are to you and your family and you can't help but love them back and when you love them, you begin to understand that peace for all around the globe begins with a personal relationship."

These visits have been reciprocal as artists, musicians, and friends have come to Springfield from both sister cities as well. Visiting delegations perform at festivals, visit local schools, and exchange gifts with city officials and their host families. They truly are emissaries of peace for all people.

## From the Executive Director:

### Celebrating 2017 with fresh perspectives

With a fresh start on a new year, it is always good to look back to celebrate achievements. At our recent 2017 annual meeting, the Friends of the Garden board, members and volunteers had the opportunity to do just that. Following are some statistics from 2016.

- 330 active volunteers.
- 20,528 reported volunteer hours valued at \$432,000.
- 24-plus park partner organizations who contribute to our mission.
- No. 1 (often) on places to visit in Springfield.
- An estimated 800,000 visitors from 37 states and 11 countries.
- A 17 percent increase in scheduled programs and weddings at the Botanical Center and Gardens.

We can also celebrate the following project completions:

- Arboretum Accreditation
- Peace Through People Pavilion & Amphitheater construction in the Dogwood Garden.
- Chimney swift towers – a much needed habitat for this migratory bird.
- Entry railroad crossing repair.
- Friends of the Garden log refresh.
- Breaking ground on phase 1 of our Sensory Garden project

While many have contributed to these accomplishments, I want to take this opportunity to express gratitude to Tom Finnie, 2016 president, for his leadership and financial support of projects. He has truly been a pleasure to work with and I have personally benefited in learning a great deal from him.

In 2017, we look forward to completing Phase One of the Sensory Garden, beginning work on habitat modifications around Lake Drummond, and welcoming gardeners from our sister city in Isesaki, Japan. They will assist with projects in our Japanese Stroll Garden and teach staff authentic Japanese gardening methods.

In 2017, we also welcome Kim Chaffin as FOG president. Kim has served as vice president for the past year and is well equipped to take the reigns of the organization.

On behalf of the Friends of the Garden Board of Directors and staff, I want to offer our sincere gratitude to all our members and volunteers for partnering with us. It is because of your dedication and generosity of

time, talent, and treasure that we have accomplished so much. We are looking forward to another great year.

*Lisa Bakerink is executive director of Friends of the Garden. Reach her by e-mail, [Info@FriendsOfTheGarden.org](mailto:Info@FriendsOfTheGarden.org), or at 417-874-2952. You can also follow her on Facebook at Friends of the Garden, on Instagram, or on Twitter @Friends\_Garden.*



**Lisa Bakerink**



**Kim Chaffin**

# Mizumoto Japanese Stroll Garden hours expanded to seven days a week

When the Mizumoto Japanese Stroll Garden reopens on April 1, it will be open seven days a week for visitors to enjoy.

One of the original themed gardens in Nathanael Greene Park when the park opened three decades ago, the gates had been closed Tuesday and Wednesday.

The news should delight travelers who were often were not aware that the garden was closed two days each week. Hours will continue to be 10 a.m. to 7 p.m. April through September, and 10 a.m.-6 p.m. through October. Admission will remain \$3 per person, although FOG members get in free as a benefit of membership.

The garden is closed for the four remaining months, a time when many hours of work have occurred, from pump replacement to bridge and walkway repairs and replacement.

In December, Don and Nancy Schmidt announced their retirement from the leadership of the Mizumoto Japanese Stroll Garden.

Under the Schmidt's leadership, the stroll garden has been transformed in phases leading up to the 30th anniversary of one of the original gardens in Nathanael Greene Park. And yet, major repairs to the ponds and walkways need to be made. Did you know you can "adopt" a section of sidewalk?

*Note for new members and readers far and wide:* The Springfield Botanical Gardens began when the federal government offered surplus property next to the U.S. Medical Center for Federal Prisoners. A second park, the Close Memorial Gardens, has since been added adjacent to the original land to create a seamless park of approximately 112 acres, including 7.5 acres dedicated to the stroll garden.

The park is now recognized for its serenity and authentic landscaping, thanks to input from professional gardeners from our sister city in Japan, Isesaki.

As former residents of Japan, Nancy and Don Schmidt accepted a leadership role after the original volunteers in the Botanical

Society of the Ozarks were incorporated into Friends of the Garden. Quite literally, the two of them worked for years to replace and remove plants to bring this exquisite garden to its present condition. In recent years, the professional park staff has assumed responsibility for maintaining and continuing to improve.

The board of directors of Friends of the Garden recognized the Schmidts for their efforts and leadership in helping make the stroll garden a major attraction, including the annual Sister Cities Association Japanese Fall Festival, which celebrated its 20th year in in 2016.

This year the festival will be Sept. 9-11, 2017. Tom Finnie, immediate past FOG board president, will chair the Japanese Stroll Garden Committee, with membership to include the Springfield Sister Cities Association, the executive director of FOG and the Parks Operations Supervisor in addition to volunteer members.

Newsletter produced by FOG board member George Freeman, Editor of Ozarks Living Magazine and [OzarksLiving.com](http://OzarksLiving.com).

## Join Friends of the Garden!

We are a nonprofit organization whose mission is to provide outstanding botanical, horticultural, environmental and educational opportunities for people of all ages. These activities are made possible by your membership and donations. You are a valued member of our volunteer team.



### Your Membership Benefits begin the day we receive your form.

- Subscription to *Ozarks Living Magazine* which includes the Friends of the Garden Newsletter
- Complimentary admission to the Mizumoto Japanese Stroll Garden (excluding the Fall Festival)
- Discounts at the Botanical Center gift shop and select local businesses
- Free or reduced admission to hundreds of public gardens across America
- Invitations to special gardening events

### I would like to volunteer:

- ☐ in the gardens at the park
- ☐ in the Friends of the Garden office
- ☐ in the Botanical Center
- ☐ at events: Friends of the Garden booth
- ☐ at events: activities
- ☐ at children's activities
- ☐ as a Butterfly House docent
- ☐ in marketing/development
- ☐ in hardscaping/construction
- ☐ at whatever you need!

I have a special talent for \_\_\_\_\_

Thoughts/Questions: \_\_\_\_\_

## Sign me up as a Friends of the Garden member!

### I choose this Annual Membership Level:

- ☐ \$35...Individual
- ☐ \$45...Individual plus one person & guest
- ☐ \$50...Family (three or more)
- ☐ \$100...Garden Friend  
(includes option to give one additional gift membership)
- ☐ \$250...Garden Contributor  
(includes option to give three additional gift memberships)
- ☐ \$500...Garden Ambassador  
(includes option to give six additional gift memberships)

### I choose this Corporate Sponsorship:

- ☐ \$500...Red Admiral
- ☐ \$1,000...Tawny Emperor
- ☐ \$2,500...Regal Fritillary
- ☐ \$5,000...Monarch
- ☐ Additional Donation \_\_\_\_\_

Name \_\_\_\_\_  
Address \_\_\_\_\_  
City \_\_\_\_\_ State \_\_\_\_\_ Zip \_\_\_\_\_  
E-mail \_\_\_\_\_ Phone \_\_\_\_\_

### Give membership as a gift!

Gift Recipient \_\_\_\_\_  
Feast \_\_\_\_\_ Wedding \_\_\_\_\_ Birthday \_\_\_\_\_ Holiday \_\_\_\_\_ Anniversary \_\_\_\_\_ Gift Renewal \_\_\_\_\_ In honor of \_\_\_\_\_ Other \_\_\_\_\_  
Address \_\_\_\_\_  
City \_\_\_\_\_ State \_\_\_\_\_ Zip \_\_\_\_\_  
E-mail \_\_\_\_\_ Phone \_\_\_\_\_

MAIL CHECK PAYABLE TO: Friends of the Garden, P.O. Box 8566, Springfield, MO 65801



**JOIN  
ONLINE**

[friendsofthegarden.org](http://friendsofthegarden.org)

**417-874-2952**

*Become a member today!*

# How you can become involved in managing the future of the gardens

The discussions in Friends of the Garden often begin at the committee level. Membership includes the board of directors and advisory board, but others are welcome. Committees are as follows:

- **Membership/Development:** Ensures the long-term financial sustainability of Friends of the Garden.
- **Communications:** Facilitates messaging between FOG and our various partners, members, and the general public.
- **Events:** Ensures the success of events which are either sponsored by FOG or in which we participate.
- **Volunteers:** Provides meaningful volunteer experiences for our valuable volunteers, maximizing the results of their efforts on behalf of FOG, and recognizing their contributions.

- **Garden:** Leads volunteers and staff work to maintain and beautify all garden areas.
- **Butterfly House Operations:** Establishes the annual schedule for the butterfly house, docent orientation and house operations throughout the season.
- **Japanese Stroll Garden:** Ensures a high quality experience for visitors to this garden within the Springfield Botanical Gardens.
- **Executive:** Works within the bylaws as officers of the corporation, immediate past president, executive director and additional members named by the president and approved by the Board to coordinate governance of FOG, its members and committees.

## New and renewing\* members, memorials, tributes, garden donations

### Membership

Ahart, Tony & Carolyn\*  
 Allen, Daren & Teresa\*  
 Antonopoulos, Tammy\*  
 Arnoldy, Becky\*  
 Averett, Judy\*  
 Aye, Lorraine\*  
 Banks, Catherine & Janeczko, Greg\*  
 Beard, Jaretta\*  
 Belote, Bob & Deana\*  
 Bollinger, Jon & Roxie\*  
 Brehmer, Maryilyn & Julie\*  
 Brown, Janet & Don\*  
 Brown, Maz & Julia\*  
 Brown, Roy & Linda  
 Burgess, JoAnne\*  
 Byrd, Nancy  
 Carter, Saundra & Len Johnson\*  
 Christiano, Mary & David \*  
 Cooper, William\*  
 Copeland, Maxine\*  
 Crabb, Robin & Jack\*  
 Crouch, Liz\*  
 Cuniff, Michael \*  
 Danielle Faflak & Drew Simms\*  
 Deal, Dixie\*  
 Dearing, William J\*  
 Denouden, Tom & Beth\*  
 DeWitt, Becky  
 Drewry, Donna\*  
 Duncan, Laurie  
 Eckert, Robert & Debbie\*  
 Ellis, Linda\*  
 Faflak, Dan\*  
 Faulkner, Sharon  
 Finnie, Allyson\*  
 Finnie, Bill & Glenda\*  
 Flammini, Diane\*  
 Fletcher, Richard\*  
 Folk, Janet\*  
 Fowler, Tommy\*  
 Fry, Lola \*  
 Fuller, Sue\*  
 Gehrig, Kevin & Stacia\*  
 Gerhart, Gerry & Carol\*  
 Halford, Linda & Gene Davison\*  
 Hammock, Mary Ann\*  
 Hardman, William \*  
 Hargis, Sally\*  
 Harman, Mary\*  
 Harris, Marjorie \*  
 Haynes, Rick & Sherry\*  
 Helm, Therese\*

Himes, Joe\*  
 Holt, Patricia & Jesse\*  
 Houston, Linda\*  
 Hunter, Kathy\*  
 Irby, Sara\*  
 Jacob, Julie & Richard\*  
 Jeffers, Sherry\*  
 Jenkins, Ann\*  
 Jones, David\*  
 Jones, Vreni\*  
 Lumpe, Jerry & Vivian \*  
 Main, Marie\*  
 Marsh, Pauline & Desmond\*  
 McCartney, Mac  
 McCune, Judy & Paul\*  
 McKeever, Greg\*  
 Menchetti, Joan E\*  
 Moore, Gaylord & Beverly\*  
 Moran, Sonia\*  
 Morse, Amy  
 Munden, Wallace & Joyce\*  
 Nance, Sharon\*  
 Nelson, Thomas & Marcia\*  
 Nibert, David & Carol\*  
 Obert, Sue\*  
 Odom, Minuen\*  
 Ownby, Steve & Arnie\*  
 Parker, Heather\*  
 Parrish, Darcy & Kirsten\*  
 Prose, Jeff & Michele\*  
 Putman, Bryon & Linda\*  
 Redmon, Carl & Joyce\*  
 Rice, Gail\*  
 Rice, Linda\*  
 Ringey, Donna\*  
 Roderique, Carolyn\*  
 Schuble, Sue\*  
 Schwab, Jane\*  
 Scott, Lew & Ruby\*  
 Scroggs, Stephen & Myra\*  
 Shipley, Jeanne\*  
 Sims-Giddens, Susan\*  
 Soholt, Sylvia\*  
 Sommer, Josh & Clarissa\*  
 Stephens, Marjory & Gayle\*  
 Stephenson, Carol & Edgar\*  
 Stewart, Charles & Roberta\*  
 Tarrasch, Rachal\*  
 Taylor, Elizabeth\*  
 Taylor, Nadine\*  
 Touhey, Terry Ann\*  
 Underwood, Randy\*  
 Vick, Jane\*

Wagoner, Nancy\*  
 Walker, Patricia White\*  
 Watson, James\*  
 West, Larry & Charlotte\*  
 Williams, Gee & Jim Stiles\*  
 Wood, Norma\*  
 Woodward, Jewell\*  
 Woodward, Jon\*  
**Garden Friend**  
 Chittim, Carolyn\*  
 Finnie, Tom\*  
 Flynn, Carolyn\*  
 Foltyn, Steve\*  
 Jones, Kathy\*  
 Long, Walt & Bev\*  
 Nelson, Ann\*  
 Nesbitt, Bill & Debbie\*  
 Pearson, Trish & Brad\*  
 Rice, Edwin & Phoebe\*  
 Shepherd of the Hills Garden Club\*  
 Simpson, Robert  
 Skinner, Michael & Mary\*  
 St. Clair, Barbara & William\*  
 Steury, Joan\*  
 Tarrasch, David & Jeanne\*

### Garden Contributor

Abrams, Norman\*  
 Barnhart, Chris & Deb\*  
 Milne, Dr. Jay & Susan  
 Quinn, Jerry\*  
 Wooten, Jan & Michael\*

### Tribute Brick Pavers

Bacon, Jo Ellen  
 Nelson, Dellene  
 Poorman, Greg  
 Printy, Laura  
 White, Tuell & Marilyn

### Tribute Trees

Casey, Tim

### Gift Membership Donors

Adams, Natalie  
 Bakerink, Lisa & Randy  
 Beezley, Carla & Robert  
 Bounds, Cynthia  
 Faflak, Dan  
 Finnie, Tom  
 Flynn, Carolyn  
 Foltyn, Steve  
 Morse, Amy  
 Parrish, Stan & Susan  
 Rice, Edwin & Phoebe

Simpson, Robert  
 Skinner, Michael & Mary  
 Tarrasch, David & Jeanne  
 Wenk, Joanna  
 Woodward, Jewell

### Gift Membership Recipients

Adams, James & Roxanne Elliott  
 Danielle Faflak & Drew Simms  
 Everett, Sandra  
 Finnie, Allyson  
 Finnie, Bill & Glenda  
 Gehrig, Kevin & Stacia  
 Hargis, Sally  
 Houston, Linda  
 McCartney, Mac  
 Parrish, Darcy & Kirsten  
 Preninger, Stephanie  
 Prose, Jeff & Michele  
 Scott, Lew & Ruby  
 Soholt, Sylvia  
 Sommer, Josh & Clarissa  
 Stephens, Marjory & Gayle  
 Steury, Joan  
 Sweet, Liz  
 Tarrasch, Rachal  
 Thomason, Andy & Brittany  
 Woodward, Jon

### General Gifts/Donations

Shepherd of the Hills Garden Club

### Restricted Donations/Gifts

Ambler, Heard & Marjorie  
 Barnhart, Chris & Deb  
 Chittim, Carolyn  
 Finnie, Glenda  
 Fletcher, Richard N.  
 Frank, Susan  
 James Mauldin  
 Johnson, R. Bruce  
 Jones, Kathy  
 King, Tom & Jackie  
 Kipfer, Barbara  
 Larry O'Reilly Foundation  
 Lipscomb, Gary & Betty  
 Putman, Bryon & Linda  
 Schuble, Sue  
 Shackter, Bonnie  
 Shaw, Bob  
 Welde, David & Glenda  
 Wooten, Jan & Michael  
 Young, John & Beverly

# Sensory Garden work begins as 'Sense of Spring' arrives

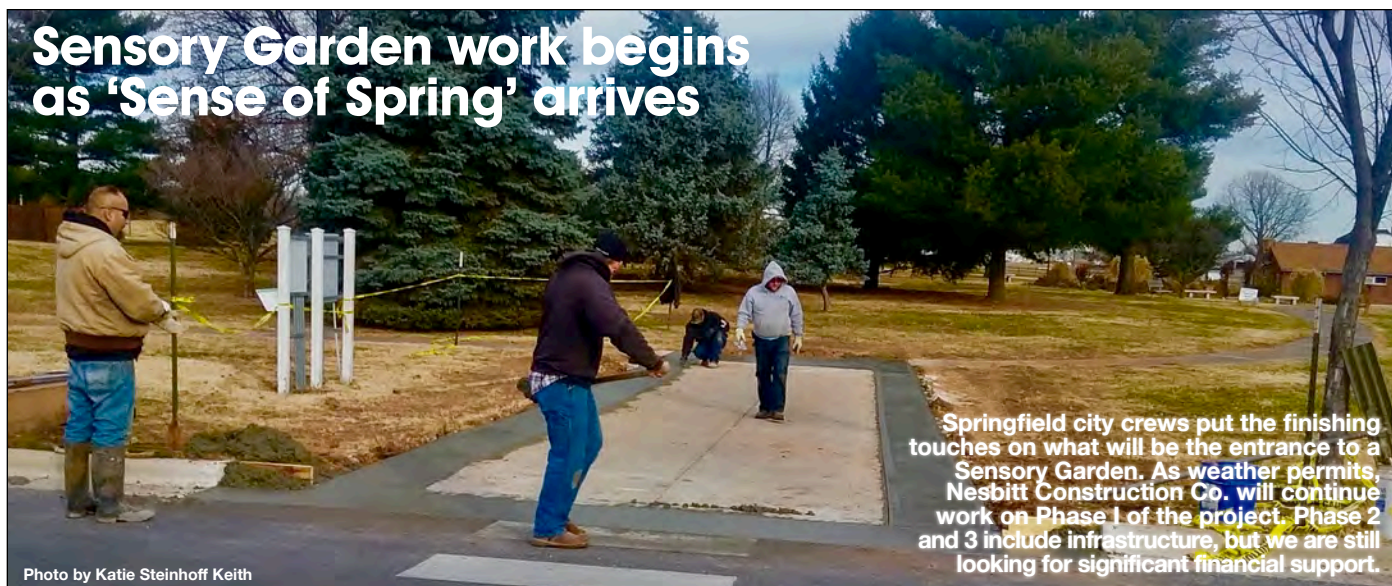


Photo by Katie Steinhoff Keith

Springfield city crews put the finishing touches on what will be the entrance to a Sensory Garden. As weather permits, Nesbitt Construction Co. will continue work on Phase 1 of the project. Phase 2 and 3 include infrastructure, but we are still looking for significant financial support.

Groundbreaking! Some say, it has been a long time coming for work to begin on the Sensory Garden, but we are starting to see some of the progress being made on what will be one of our most important park amenities and gardens to help the Springfield-Greene County Botanical Center staff, University of Missouri Greene County Extension and Friends of the Garden to fulfill their missions.



## A Parks Perspective:

Katie Steinhoff Keith

It is a ground-breaking relationship between these three entities that embody the Springfield Botanical Garden experience.

I say this because we worked as a team to bring all of our organizations this far. Each has had to compromise on what we need for the good of the whole. Each has a role to play; in simplest terms, Parks owns the property, Friends make it beautiful and Extension teaches you how to apply what you see to your home or business. I can't say that I know of another city-county, university and friends organization that has created such a dynamic public botanical garden. There is still room to grow! Now is the time to identify people who have the legacy wish to share gardens with others and/or identify sponsors to ensure the success of the garden

attractions for the community.

The progress on construction of phase 1 of the Sensory Garden is ground-breaking in several ways. First, the sponsorship and financial support to the public park system is critical for any garden additions, enhancements and improvements. It took time to gain the financial support for a garden that would be funded by donations, be completely accessible and be built in a way to stand the test of time. Second, this garden is ground-breaking in the way that volunteers have invested in this park and its plants, often caring for them at home before bringing them to the park for display.

Hopefully, we are one step closer to having our own greenhouse for growing and protecting plants in their off season. The plans for the Sensory Garden phase 2 or 3 include the infrastructure and location for serving the highest intensity of



horticulture and programming, but we are still looking for significant financial support.

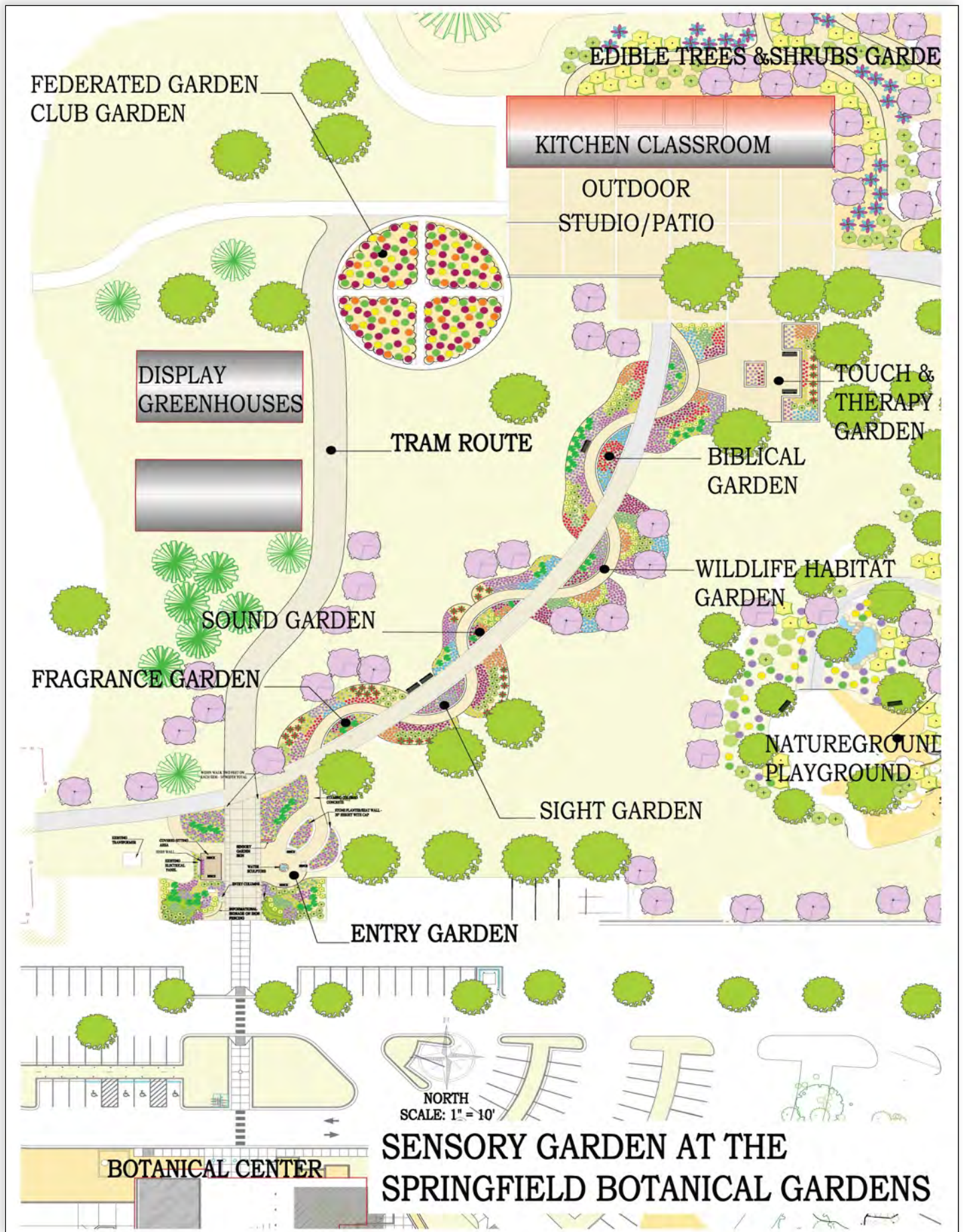
It is groundbreaking for all organizations to focus on the master plan, infrastructure and construction projects as a critical amenity, that may not be immediately enjoyed by the public but will provide staff a proper backstage for creating floral displays and creating programs that will be the perfect stage for connecting people with plants through what they see, smell, taste, touch and hear.

We three organizations will be working together at the Lawn and Garden Show at the E-Plex, Feb. 24-26, 2017. We each have a role to play in our "Taste of Spring" display. The Master Gardeners of Greene County, an Extension program, will share information about planting gardens to feed the bees and have a planting activity for kids. The Friends of the Garden will showcase information about butterflies and talk about the garden attractions. The Botanical Center staff will share information about hosting any special occasion gathering within our meeting space, pavilions and the gardens. Please come out and see us at the show or at the gardens.

*Katie Steinhoff Keith is coordinator of the Springfield Botanical Center at the Springfield Botanical Gardens, 2400 S. Scenic, Springfield, Mo., and an ex-officio board member of Friends of the Garden. Contact her at [kkeith@springfieldmo.gov](mailto:kkeith@springfieldmo.gov) or 417-891-1515.*

**Peter Longley is the horticultural interpreter at the Springfield Botanical Gardens. Here he shares his painting skills at the 2016 Lawn & Garden Show.**

# Landscape architect's conception for Sensory/Kitchen Garden



# Take the right turn to get to enjoy the Springfield Botanical Gardens



## Save the Date: Events of interest to Ozarks gardeners\*

- **Feb. 9:** 5-6:30 p.m., FOG Board of Directors meet.
- **Feb. 14:** 1-4 p.m., Master Gardener Core Training begins through April 4.
- **Feb. 24-26:** Lawn & Garden Show, Ozark Empire Fairgrounds E-Plex.
- **March 9:** 9-10:30 a.m., Volunteer informational training.
- **March 9: 5-6 p.m.,** Friends of the Garden board meets.
- **April 1:** Mizumoto Japanese Stroll Gardens open for 2017.
- **April 1:** Native Plant Sale at Springfield Conservation Nature Center, 4601 S. Nature Center Way, Springfield.
- **April 13:** Friends of the Garden board meets.
- **April 22:** Peace Through People Pavilion Dedication; 2017 Kite Festival.
- **April 22:** Annual Kite Festival.
- **April 28:** Noon, Friends of the Garden Volunteer Luncheon.
- **April 29:** 8:30 a.m-1 p.m. Master Gardeners of Greene County Plant Sale.\*\*
- **April 29:** Bark in the Park.
- **May 2:** Midnight to midnight, Give Ozarks Campaign.
- **May 12:** Butterfly House opens on National Public Gardens Day.

\* Unless otherwise noted, all events are at the Springfield Botanical Center. Reach us with your garden-related events by e-mail at [News@FriendsOfTheGarden.org](mailto:News@FriendsOfTheGarden.org), or find us on Facebook and Twitter, or at [www.fogcalendar.com](http://www.fogcalendar.com). On each Friday and Monday, "Springfield Botanical Gardens News" helps keep you informed on what's happening around the Springfield-Greene County Botanical Center & Gardens. To receive the latest news, send your e-mail address to [plongley@springfieldmo.gov](mailto:plongley@springfieldmo.gov). Friends of the Garden's "Daily News FOG Blog" is at [www.friendsofthegarden.org](http://www.friendsofthegarden.org).

Aboretum	79	Hosta Garden	35
Asiatic Lily Garden	44	Iris Garden	41
Audubon Trail & Bubbler	82	Magnolia Garden	53
Azalea Garden	75	Master Gardener Demonstration Gardens	4
Blue Star Memorial Garden	29	Meditation Garden	96
Botanical Center Gardens	1	Mizumoto Japanese Stroll Garden	78
Butterfly Garden	45	Mosaic Garden	32
Butterfly House	46	Native Shrub Garden	52
Butterfly Windrider Garden	47	Ornamental Grasses Garden	39
Caterpillar Café Garden	98	Peace Garden	71
Columbine Garden	48	Peony Garden	43
Daffodil Bulb Garden	51	Rain Garden	50
Daylily Garden	42	Redbud Garden	55
Dogwood Garden	56	River of Mums Garden	100
Dwarf Conifer Garden	62	Rose Garden	33
Edge of the Kickapoo Prairie Garden	58	Succulent Garden	40
English Garden	37	Viburnum Garden	30
Ethnic Life Stories Trail of Trees	81	Vietnam Memorial Garden	99
Federated Garden Clubs Perennial Garden	72	White Garden	34
Fern & Moss Garden	70	Wildflower Garden	49
Flowering Shrub Garden	31	Winter Garden	28
Founders' Garden	60	Woodland Garden	66
Gray/Campbell Heritage Garden	77		

At right is a list of our gardens, coincides with a "Guide By Cell" number. An example is the Dr. Bill Roston Butterfly House 46#. As you tour the gardens, or wherever you may be, you may call 417-213-3016 and enter the garden guide number following the name of the garden shown at right, followed by the # sign, for a brief overview of each of the