

The Bimonthly Journal of the Friends of the Garden

VOL. 11, NO. 6

REACH US AT 417-891-1515

DECEMBER/JANUARY 2016/2017



*Peace Through
People Pavilion
celebrates with Tunes
from Ilaquepaque*

Sheila Rios, along with brothers, Fernando and German Quintana, came to perform from Guadalajara, Jalisco, Mexico, on behalf of the Sister Cities Associations, perform an encore at a membership appreciation banquet after celebrating their music at the new Peace Through People Pavilion on Oct.

See the Holiday Express and celebrate with us

Just when you might think the Springfield Botanical Gardens might be winding down, you can feel the energy in the air.

It's the holidays approaching. It's the whistle of Ozark Garden Railway Society's Christmas trains, yours to engineer at the push of a button. It's poinsettias all around Christmas tree and atrium and gift bargains to be had in the Botanical Boutique (10 percent off for FOG members).

It's celebrating the news that our Springfield-Greene County Parks have been recognized as among the very best in the

land by the Commission for Accreditation of Park and Recreation Agencies (CAPRA), announced at the National Recreation and Parks Association in St. Louis.

It's familiar faces in new roles, Tom Finnie wrapping up his year as president of Friends of the Garden; Kim Chaffin about to step into the job; Barbara Lucks stepping off the board in a big way to become volunteer coordinator.

You can feel it in the Winter Garden, meticulously designed by Gail Wright to show there is no off-season in the gardens.

Now it's your turn. Give a membership to a friend (there's a membership form on page 4, or at FriendsOfTheGarden.org).

We hope to see you at the annual meeting at 5 p.m. Thursday, Jan. 12, at the Botanical Center, where members will be well fed and entertained by the members of the Eagle Eye Camera Club from John Thomas School of Discovery in Nixa, offering their personal portraits of the gardens under the guidance of Amy Short.

It could just get us close enough to see spring will be just around the bend.

**VISIT FOG
ONLINE
CLICK HERE**



Profile: Tom DeGeere

Page 2: There's nothing miniature about Tom DeGeere and the Ozark Garden Railway Society.



Parks Accreditation

Page 4: You knew, we knew, now everyone knows. Springfield-Greene County Parks is among the very best.

If you're reading this newsletter online, many items are hyperlinked to the Internet for further information.

AboutFOG

Vol. 11, No. 6, December/January 2016

2400 S. Scenic, Springfield, Mo. 65807

Friends of the Garden is a non-profit 501(c)(3) corporation founded in 1999 to develop the Close Memorial Gardens, located at 2400 South Scenic in Springfield, home of the Springfield/Greene County Botanical Center. We seek a dynamic relationship with other organizations working to benefit the park gardens. This newsletter is now published six times a year in print through Ozarks Living Magazine and delivered online as well to members. Past issues and other information can be found at www.FriendsoftheGarden.org.

Officers:

President: Tom Finnie
Vice-president: Kim Chaffin
Secretary:
Treasurer: Christy Yoakum

Board of Directors:

Terms ending October 2017: Jessi Beauchamp, Brent Bothwell-Palmer, Susan Cardwell, Marthe Close, Dr. Pam Duitsman, Christie Eden, Avis Holloway, and Christy Yoakum.

Terms ending October 2018: Maggie Black, Kim Chaffin, George Freeman, Barbara Lucks, Gail Melgren, Becky Morgan, Heather Parker, Betty Shook and Matt Wolfel.

Terms ending October 2019: Roseann Bentley, Kayla Chambers, Tom Finnie, Morey Mechlin and Don Snyder.

Advisory Board:

Deanna Armstrong, Patrick Byers, Major Close, Stan Horsch, Bob Kipfer, Bob Lovett, Chris Barnhart, Carla Beezley, Bob Childress, Jeanne Duffey and Bill Roston, Kaileen Volentine, Gabrielle White and Cindy Willis.

Ex-Officio and Staff:

Lisa Bakerink, Executive Director;
Barbara Lucks, Volunteer Coordinator;
Katie Steinhoff Keith, Botanical Center Coordinator; Peter Longley, Botanical Center Horticultural Interpreter.

Our Mission:

To inspire the discovery, understanding and appreciation of nature, by creating and maintaining the Springfield Botanical Gardens at Nathanael Greene/Close Memorial Park and by supporting the mission of the Springfield-Greene County Botanical Center and Park Board.



Since the Botanical Center opened in the Springfield Botanical Gardens in 2010, the Ozark Garden Railway Society has been creating a miniature holiday train station that children from "9 to 90" have enjoyed.

With the push of a button, the trains wind around several tracks and tunnels through a community of buildings, some of them familiar because they recreate existing structures. Thomas the Tank Engine, a familiar character to children, is among them.

Tom DeGeere is past-president of the OGRS, a park partner with long-term ambitions of a permanent presence in the gardens. OGRS model train enthusiasts and families that meet monthly for fellowship, garden railroad talk, and a chance to play with trains.

Membership is open to all and more information is available at OGRS.org. The group has earned a national reputation with their annual OMRA Spring Train Show.

"Tom DeGeere and the members of the Ozark Garden Railroad Society have



created an incredible experience in our atrium," says Lisa Bakerink.

"Imagine the effort it takes to create this adventure each year. We appreciate them so much."

"A garden railway as built by Tom and Jean is about a lot more than just the miniature trains," writes Peter Longley. "Tom brings humor and creative surprise elements into his design, but also important aspects of horticulture that a Garden Railway envelops."

Learn more:

The OMRA 2017 Spring Train Show
Saturday, March 11th,
2017 9a.m. - 3 p.m.
Springfield Expo Center
635 St. Louis Street
Springfield, Mo.



The Ozark Garden Railroad Society has entertained visitors with its model train display since the Botanical Center opened in 2010.

Garden Notes

from your friends



Barbara Lucks new volunteer coordinator

Barbara Lucks has been named volunteer coordinator for Friends of the Garden. Her part-time position was approved by the board in October. Barbara had been secretary of the board of directors. She replaces Kelly



Barbara Lucks

McGowan, who accepted a full-time position with the MU Extension Service as an horticulture educator.

Barbara will divide her work schedule of Springfield Sister Cities Association, which is a park partner and the Springfield Botanical Gardens. The organization is the key sponsor of the Japanese Fall Festival each September.

Barbara had been sustainability officer for the Department of Environmental Services for the City of Springfield for the past 22 years, where she was responsible for developing and implementing sustainability efforts for the city organization and guiding the city's public involvement in community sustainability.

Officers nominated, board members elected

The following officers have been put forward by the nominating committee and approved for final consideration by the board of Friends of the Garden for 2017.

President: **Kim Chaffin.**

Vice-president: **Gail Melgren.**

Secretary: **Becky Morgan.**

Treasurer: **Christy Yoakum.**

New board members elected at the October meeting include **Roseann Bentley, Mike Carlie, Kayla Chambers, Tom Finnie, Morey Mechlin and Don Snyder** (all are 1st term except for Tom Finnie and Don Snyder, who are beginning their second terms. Tom Finnie and Don Snyder will be serving a second term. Mike Carlie has since resigned because of a conflict in meeting times with another organization.

Learn to make wreaths, centerpieces, swags

Gather your family, co-workers and friends for a private or semi-private holiday floral arrangement party with Katie Steinhoff Keith on Saturday, Dec. 10, at the Springfield Botanical Center. Please note the sessions will be repeated three times beginning from 9-11 a.m.; repeating from Noon-2 p.m.; and again from 3-5 p.m.

Katie will help you create your own wreath, centerpiece or swag with fresh greenery and dried natural ornaments from your own garden. Class size is limited to 12, and there is a \$25 fee to cover the cost of supplies and materials. For reservations, call 417-891-1515. Participants must be 12 and older.

From the Executive Director:

Butterfly House needs your helping hands

It was a hot August morning when two people began their road trips, one headed north, the other south, to a destination neither had ever been. Nervous excitement bubbled as Jane contemplated her pending encounter. Mike's thoughts were focused on what he might say when he first saw her.

On this particular August day, the Roston Butterfly House had been chosen as the meeting place for two people who had previously only spoken. New love, new hope for two people who had endured through life's trials and had all but given up hope in their longing for companionship. The butterfly house, where the promise of new life abounds and the wonder of nature is celebrated, was the perfect setting. For Jane and Mike, the butterfly house was the point of a new beginning together.

The same morning, a flurry of activity was taking place within the Roston Native Butterfly House. As the warm sun rose and began to beat down, the roosting butterflies had awakened and were beginning their perpetual dances around flowers, alighting and drawing nectar from each. Caterpillars continued their munching, each devouring leaves from their favorite tree, shrub, or herb. After having hung silently for nearly two weeks, two butterflies were emerging from their chrysalis and were about to experience life as a completely different creature.

But what if the butterfly house had been closed on that day when Jane and Mike had planned to meet? Imagine a family, having traveled across town or across the state to visit our native butterflies, excitedly hurrying to the entrance only to find a locked door. Unfortunately, this can happen. The butterfly house depends on volunteers to staff it all spring and summer and while we have an amazing and dedicated group of volunteers, the public demand on the butterfly house continues to exceed our volunteer availability.

As 2016 winds down, we are asking you consider a year-end gift to Friends of the Garden as we look to hire a paid associate for the 2017 spring/summer season at the butterfly house. The person in this position would not only ensure that the house can be open on a regular basis for visitors, but would also care for the butterflies in all their life cycle stages, including the plants they depend upon. Your gift of:

- **\$50** = 5 hours of support
- **\$100** = 10 hours of support
- **\$250** = 25 hours of support
- **\$1,000** = 100 hours of support
- **\$5,600** = 560 hours of support for the May-August season

As the only all-native butterfly house in Missouri, the Roston Butterfly House is truly unique. This year more than 37,000 visitors came to enjoy, learn, find peace and, yes, even find love. Your support, present and past, is deeply appreciated as we continue to bring people nature and gardens together at the Springfield Botanical Gardens.

Lisa Bakerink is executive director of Friends of the Garden. Reach her by e-mail, Info@FriendsOfTheGarden.org, or at 417-874-2952. You can also follow her on Facebook at Friends of the Garden or on Twitter @Friends_Garden.



Lisa Bakerink

Parks accreditation by CAPRA recognizes national standards

You knew it. We knew it. Now every knows the quality of our parks is second to none, including the Springfield Botanical Gardens. The Springfield-Greene County Park Board has received full accreditation from the Commission for Accreditation of Park and Recreation Agencies (CAPRA) at the National Recreation and Park Association annual conference in St Louis.

Springfield-Greene County Parks is now among only 155 CAPRA-accredited parks and recreation agencies in the U.S., including 14 newly accredited this fall.

Less than two percent of parks and recreation agencies in the country are accredited. There are three other accredited agencies in Missouri: Chesterfield, Kansas City and Lee's Summit.

The Park Board spent more than two years in the accreditation process, reviewing extensive documentation of compliance with 151 national standards as well as a



thorough site visit by CAPRA representatives in June. This is the first time the park board has achieved this accreditation, which will now be renewed every five years.

The CAPRA accreditation team noted the park board's 103-year history, its 2000 NRPA Gold Medal Award, its diverse and varied system, its leadership in sports tourism, its Community Olympic Development Programs, and above all, its community involvement and numerous partnerships as elements that stand out among peer agencies.

Parks Director Bob Belote and Park Board Chair Sarah McCallister accepted a certificate and crystal trophy, accompanied

by project coordinator Dr. Peggy Riggs and Assistant Parks Director Jim Fisher, who headed up accreditation process, and several parks staff members in St Louis attending the NRPA conference.

McCallister emphasized that accreditation confirms the Park Board is one of the top agencies in the country.

"Accreditation would not happen unless everyone at the Park Board is doing their job to the best of their ability," says McCallister. "It means we have met 151 national standards measuring the quality of our programs and services. This is a wonderful honor, well deserved by all the people who made it happen, including the park board's wide network of community supporters."

A celebration is planned at a later date.

For more information on CAPRA, visit nrpa.org/CAPRA.

Newsletter produced by FOG board member George Freeman, Editor of Ozarks Living Magazine and OzarksLiving.com.

Join Friends of the Garden!

We are a nonprofit organization whose mission is to provide outstanding botanical, horticultural, environmental and educational opportunities for people of all ages. These activities are made possible by your membership and donations. You are a valued member of our volunteer team.



Your Membership Benefits begin the day we receive your form.

- Subscription to *Ozarks Living Magazine* which includes the Friends of the Garden Newsletter
- Complimentary admission to the Mizumoto Japanese Stroll Garden (excluding the Fall Festival)
- Discounts at the Botanical Center gift shop and select local businesses
- Free or reduced admission to hundreds of public gardens across America
- Invitations to special gardening events

I would like to volunteer:

- ☐ in the gardens at the park
- ☐ in the Friends of the Garden office
- ☐ in the Botanical Center
- ☐ at events: Friends of the Garden booth
- ☐ at events: activities
- ☐ at children's activities
- ☐ as a Butterfly House docent
- ☐ in marketing/development
- ☐ in hardscaping/construction
- ☐ at whatever you need!

I have a special talent for _____

Thoughts/Questions: _____

Sign me up as a Friends of the Garden member!

I choose this Annual Membership Level:

- ☐ \$35...Individual
- ☐ \$45...Individual plus one person & guest
- ☐ \$50...Family (three or more)
- ☐ \$100...Garden Friend (includes option to give one additional gift membership)
- ☐ \$250...Garden Contributor (includes option to give three additional gift memberships)
- ☐ \$500...Garden Ambassador (includes option to give six additional gift memberships)

I choose this Corporate Sponsorship:

- ☐ \$500...Red Admiral
- ☐ \$1,000...Tawny Emperor
- ☐ \$2,500...Regal Fritillary
- ☐ \$5,000...Monarch
- ☐ Additional Donation _____

Name _____

Address _____

City _____ State _____ Zip _____

E-mail _____ Phone _____

Give membership as a gift!

Gift Recipient _____

For _____ Wedding _____ Birthday _____ Holiday _____ Anniversary _____ Gift Renewal _____ In honor of _____ Other _____

Address _____

City _____ State _____ Zip _____

E-mail _____ Phone _____

MAIL CHECK PAYABLE TO: Friends of the Garden, P.O. Box 8566, Springfield, MO 65801



JOIN ONLINE

friendsofthegarden.org

417-874-2952

Become a member today!

Bettine Clemen will perform at Sensory Garden fund-raiser Nov. 27

Bettine Clemen, known to some as the "Pied Piper of the Planet" because of her interaction with children and animals through her music, will perform a Friends of the Garden benefit concert at 3 p.m. on Sunday, Nov. 27, 2016, at the Springfield-Greene County Botanical Center, 2400 S. Scenic Ave., in Nathanael Greene/Close Memorial Park.

Tickets for the multi-media concert may be purchased at the door for \$20 (adults) and \$10 (students and children), cash or checks only. Doors to the meeting room open at 2:30 p.m. "There will be something at this concert for everyone with a wide variety of musical expression," says Peter Longley, horticultural interpreter at the Botanical Center.

The concert benefits the construction of a three-acre Sensory Garden in the Springfield Botanical Gardens. Groundbreaking is scheduled

yet this year. The Sensory Garden will include raised beds labeled in Braille, an indoor/outdoor kitchen classroom, water features, chimes and special areas to inform sight, sound, fragrance and



Bettine Clemen

performed all over the world in some of the world's greatest halls such as the Lincoln Center in New York City and the Royal Albert Hall in London, and has generously donated her time and talent three times in Springfield to help raise funds to make the Sensory Garden a reality.

touch within therapy gardens. The Sensory Garden will join the 20 themed gardens, 15 special collections and five naturalized areas that make up the Springfield Botanical Gardens.

Clemen has

"It is fitting now that we will be breaking ground on this massive project, we are holding this fourth concert through Bettine's generosity," says Longley.

"We are grateful to Bettine for her enthusiasm and help with the Sensory Garden," says Lisa Bakerink, executive director of the Friends of the Garden. "The friends she's made here during her performances always look forward to visiting with her."

Other events during Thanksgiving Sunday at the Botanical Center include a holiday miniature railway set up in the atrium by the Ozarks Garden Railway Society and holiday shopping at the Botanical Boutique Gift Shop. Members of the Friends of the Garden also receive a 10 per cent discount on the tax-free garden-related merchandise.

For more information, visit [Friends of the Garden.org](http://FriendsoftheGarden.org) or Facebook at [FriendsOfTheGarden/events](https://www.facebook.com/FriendsOfTheGarden/events).

New and renewing* members, memorials, tributes, garden donations

Membership

Baker, Paul & Jennifer*
Baskins, Donald & Tamara*
Beecharmer Farms*
Bentley, Roseann & John*
Blackshear, Eva & Robert*
Budd, Dennis & Sandra Skinner*
Burton, David*
Canlas, Mario & Emily*
Carney, Jon*
Carson, George & Sherry*
Chambers, Kayla
Chiles, Mike & Mary*
Clark, Charles & Connie*
Courtney, Mary*
Dockery, David & Nena*
Dogwood Trail Garden Club*
Donaldson, Brandon
Ehlers, Tom & Abbe*
Ervin, Patricia*
Frank, Susan & Lee*
Funkhouser, Robin & Brenda*
Garrott, Jay*
Giedd, Ronald & Joanne*
Gintz, Anna*
Glass, Topper*
Hall, Phillip & Barbara*
Harlan, Michael & Merry*
Harris, Carolyn*
Hinck, Susan*
Jenkins, Max & Peggy*

Johnson, Frank & Pamela*
Kelly, Linda*
Kelsey, Audrey
Kinney, Dan*
Kristi Kittleson & Tom Cornett*
Lejeune, Wendell & Grace*
Mahoney, Tim
Mallamo, Nancy*
Matney, Sandra
McCoy, Cathy*
McCroskey, Amber
McGowan, Brent & Kelly*
McHaffie, James*
Mechlin, Norman & Morey
Million, Cindy*
Moore, Patti & Bruce*
O'Rourke, Peggy
Owens, James*
Owens, Marilyn*
Peele, John*
Pheonix, Kristin
Potts, Annette & Ray*
Pruitt, Donna*
Raborar, Art & Josie*
Ruzicka, Judith*
Sachs, Bill*
Shaw, Bob*
Shook, Betty*
Simpkins, Wanda*
Singer, Harold*
Stiles, Francis & Barbara*

Tilley, Josette & Mike*
Trippe, Vicky*
Utle, Rose*
Vinson, Norma*
White, Tuell & Marilyn*
Wilson, Penny*
Garden Friend
Awbrey, Diane & David*
Bentley, Roseann & John*
Carlie, Mike*
Daugherty, Susan*
Edwards, Gale & Becky*
Iler, Anne & Steve*
Pearl, Tom & Peggy*
Steinhoff, Daniel & Michaeline*

Garden Contributor

Boswell, Susan*
Carter, Dr. Elaine*
Clary, Gerald & Shirley*
Coverdell, Ron & Elizabeth*

Tribute Brick Pavers

Anderson, Wanda
Bridwell, Herta
Close, Marthe
Pink Dogwood Garden Club
Shupert, Ginger

Tribute Benches

Family & Friends of Gretchen
Elaine Schaefer
Johnson, Peggy

Gift Membership Donors

Carter, Dr. Elaine
Close, Marthe
Frank, Susan & Lee
Kelsey, Audrey
Mauldin, Jim

Gift Membership Recipients

Bigelow, Marcia
Black, Daniel & Karla*
Cloyd, Dr. Tim & Wendy
Fleeman, Sue Ellen
Howard, Debbie
Ingemi, Jenn
Kurtz, Heather
Molica, Matt & Camilly
Phillips, Charlotte

General Gifts/Donations

Arc of the Ozarks Foundation
Carlie, Mike

Restricted Donations/Gifts

Finnie, Tom
Freeman, George & Nancy
Neff, Sheila

'We design our gardens to lure you in, invite you to come back, hope you say "wow," and share it with others'

It is 6:15 p.m. on a third Tuesday in the Buckhead District in Atlanta, Ga., at the OK Café. It wouldn't be unusual that your waitress is a six-foot tall drag queen wearing four-inch heels and electric blue hair, but every month around this time, the air in this diner hums unusually thick with botanical Latin and whispers of experiences in exotic destinations as many of the

patrons catch up with like-minded garden enthusiasts all on their way to the Georgia Perennial Plant Association meeting at the Atlanta History Center.

The McElreath Hall and Auditorium seats about 400 people, and many times you would be challenged to find a seat as this free garden meeting attracts some of the most well-known authors and garden designers across seven states. If you are a garden enthusiast, this is the social event to see and be seen, but also a great place to pick up on every new dimension that is happening on the gardening scene.

If there was a plant nerd paparazzi, it was easy to recognize characters like Ryan Gainey, with wide-rimmed floppy hat and long flowing scarves. Mr. Gainey unfortunately passed away this summer in a house fire while trying to save his dogs.

But, you might have seen his work as his personal home was the film set to Disney movie, *"The Odd life of Timothy Green."* He did work for the 1996 Olympics in Atlanta, several botanical gardens and private projects where money and imagination had no limits.

Brooks Garcia is often seen at these meetings and has exhibited many times at the Chelsea Flower Show in London. He has great talent designing with succulents and carnivorous plants. Ozzie Johnson, the plant breeder for ItSaul Plants, introduced 'Soft Caress' Mahonia, that won the 2013 Plant of the Year at the Chelsea Flower Show and a sample of this plant can be seen growing on the north side of our Botanical Center building. There are television celebrities, leading experts in Clematis, Hydrangea, plants of Asia, college professors and nurserymen that all gather monthly to sharpen their saw and share their passion for plants!

I thought I would mention this scene, because it is something that occurs in communities across the country. To some extent, and on a smaller scale, this scene happens a couple times per month at the Botanical Center.

The park partners and plant societies share their passions for plants and gardens at garden work days and at their membership meetings. We do have plant breeders; artists of many forms, including internationally known authors and performers that are just regular people you know who make up the Springfield Botanical Gardens.



A Parks Perspective:

Katie Steinhoff Keith



Chimney swifts can only live in vertical nesting boxes like those installed this fall near the Gray-Campbell Farmstead.

Audubon volunteers install nesting boxes to attract chimney swifts

If you have observed four columns resembling chimneys, they are a project we hope soon will be home to chimney swifts, which nest only on vertical surfaces.

Located near the Gray-Campbell Farmstead, they were funded by Jim Fossard, built by Charley Burwick and Bill Foster, all members of the Great Ozarks Audubon Society, and installed by parks operations crews.

The population of chimney swifts has declined across the majority of their range which extends across North America and Southern Eastern Canada. Urban homes now cap their chimneys to prevent nesters. Old industrial smokestacks are gone and a change in the insect populations blamed on insecticides has likely affected their diet.

They migrate each spring from the Upper Amazon River Basin, often seeking out their previous nesting sites. Audubon volunteers are hoping the boxes offer an inviting alternative.

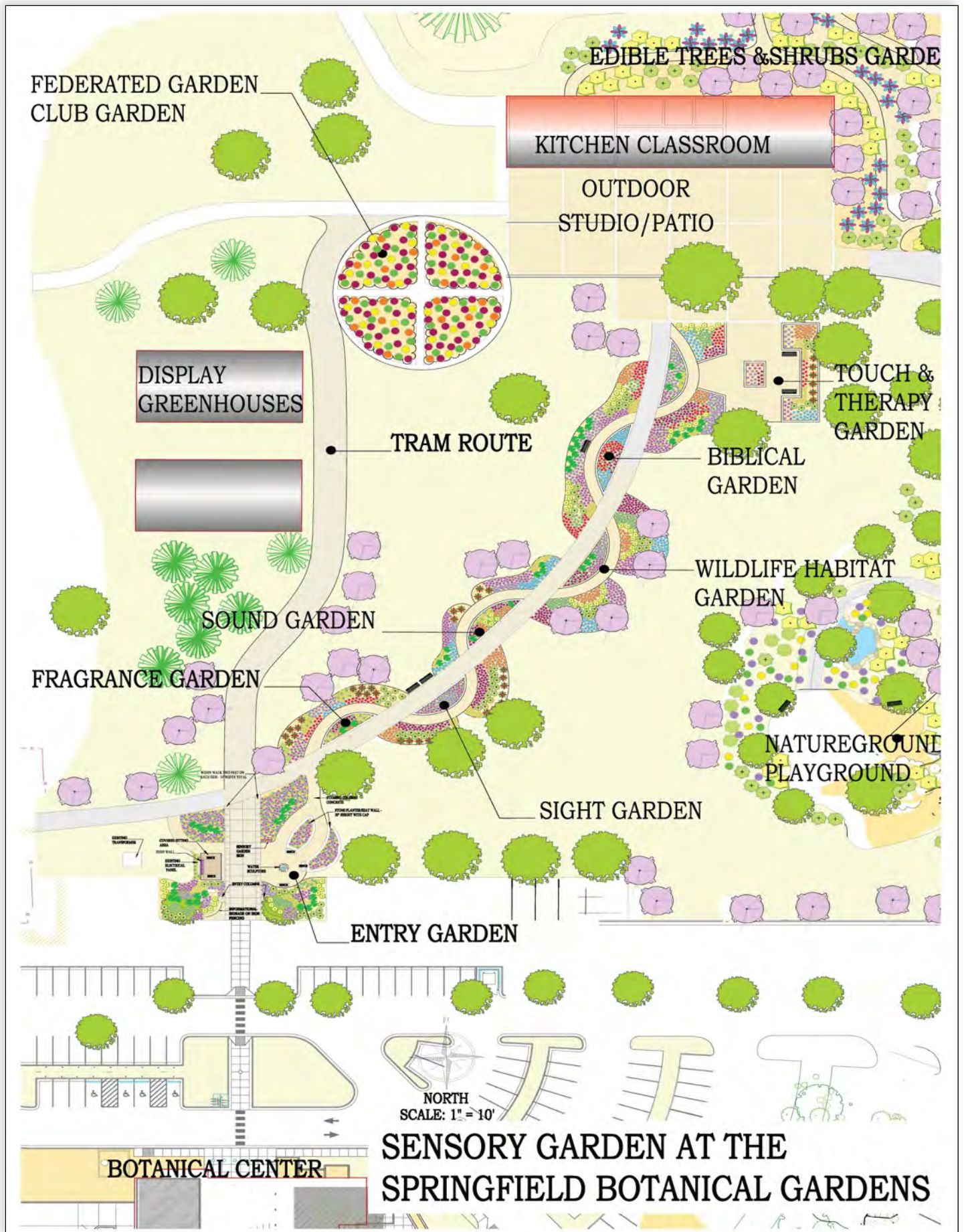
Big picture-wise, we are trying to paint the picture that helps our community do the best it can and be a destination for travelers. We want to grow and promote the best plants not just for looks but wise use of resources like water. We want to assemble and design gardens that lure you in, invite you to come back, make you say "wow," and want to share it with others.

We do this in many exercises in education, including creating programs and communications for all ages in all formats; cultivating the plants and maintaining gardens; and by traveling together like we have done in the past with our Gardens of London and Historic American Gardens Tours and now partnering with Sister Cities to see gardens and landscapes in Mexico and Japan.

If you like what you see, I hope you will support the Friends of the Garden and the park partners that make it happen. If you don't like what you see, now is a good time to get involved. Our first volunteer training for 2017 will be on Martin Luther King Jr.'s Day of Service, Noon Monday, Jan. 16. RSVP to Katie Keith at kkeith@springfieldmo.gov.

Katie Steinhoff Keith is coordinator of the Springfield Botanical Center at the Springfield Botanical Gardens, 2400 S. Scenic, Springfield, Mo., and an ex-officio board member of Friends of the Garden. Contact Katie Steinhoff Keith at kkeith@springfieldmo.gov or 417-891-1515.

Landscape architect's conception for Sensory/Kitchen Garden



Take the right turn to get to enjoy the Springfield Botanical Gardens



'Save the Date!' Events of interest to Ozarks gardeners*

- **Dec. 8:** 5-6:30 p.m., Friends of the Garden Board meets.
- **Dec. 10:** 9-11 a.m.; Noon-2 p.m.; and 3-5 p.m. Make a wreath, centerpieces or swag with Katie Steinhoff Keith. Fee is \$25 to cover materials (see story on page 3).
- **Jan 12:** 12:30-2 p.m., Volunteer informational training.
- **Jan. 12:** 5 p.m., Friends of the garden annual meeting, with food & entertainment.
- **Feb. 9:** 5-6:30 p.m., FOG Board of Directors meet.
- **Feb. 14:** 1-4 p.m., Master Gardener Core Training begins through April 4.
- **Feb. 24-26:** Lawn & Garden Show, Ozark Empire Fairgrounds E-Plex.
- **March 9:** 9-10:30 a.m., Volunteer informational training.
- **April 1:** Mizumoto Japanese Stroll Gardens open for 2017.
- **April 22:** Peace Through People Pavilion Dedication; 2017 Kite Festival.
- **April 28:** Noon, Friends of the Garden Volunteer Luncheon.
- **April 29:** 8:30 a.m-1 p.m. Master Gardeners of Greene County Plant Sale.**
- **May 2:** Midnight to midnight, Give Ozarks Campaign.
- **May 12:** Butterfly House opens on National Public Gardens Day.

* Unless otherwise noted, all events are at the Springfield Botanical Center. Reach us with your garden-related events by e-mail at News@FriendsOfTheGarden.org, or find us on Facebook and Twitter, or at www.fogcalendar.com. On each Friday and Monday, "Springfield Botanical Gardens News" helps keep you informed on what's happening around the Springfield-Greene County Botanical Center & Gardens. To receive the latest news, send your e-mail address to plongley@springfieldmo.gov. Friends of the Garden's "Daily News FOG Blog" is at www.friendsofthegarden.org.

** Note this is a new start time.

At right is a list of our gardens, coincides with a "Guide By Cell" number. An example is the Dr. Bill Roston Butterfly House 46#. As you tour the gardens, or wherever you may be, you may call 417-213-3016 and enter the garden guide number following the name of the garden shown at right, followed by the # sign, for a brief overview of each of the

Aboretum	79	Hosta Garden	35
Asiatic Lily Garden	44	Iris Garden	41
Audubon Trail & Bubbler	82	Magnolia Garden	53
Azalea Garden	75	Master Gardener Demonstration Gardens	4
Blue Star Memorial Garden	29	Meditation Garden	96
Botanical Center Gardens	1	Mizumoto Japanese Stroll Garden	78
Butterfly Garden	45	Mosaic Garden	32
Butterfly House	46	Native Shrub Garden	52
Butterfly Windrider Garden	47	Ornamental Grasses Garden	39
Caterpillar Café Garden	98	Peace Garden	71
Columbine Garden	48	Peony Garden	43
Daffodil Bulb Garden	51	Rain Garden	50
Daylily Garden	42	Rebud Garden	55
Dogwood Garden	56	River of Mums Garden	100
Dwarf Conifer Garden	62	Rose Garden	33
Edge of the Kickapoo Prairie Garden	58	Succulent Garden	40
English Garden	37	Viburnum Garden	30
Ethnic Life Stories Trail of Trees	81	Vietnam Memorial Garden	99
Federated Garden Clubs Perennial Garden	72	White Garden	34
Fern & Moss Garden	70	Wildflower Garden	49
Flowering Shrub Garden	31	Winter Garden	28
Founders' Garden	60	Woodland Garden	66
Gray/Campbell Heritage Garden	77		