

The Bimonthly Journal of the Friends of the Garden

VOL. 9, NO. 4

REACH US AT 417-891-1515

AUGUST/SEPTEMBER 2014

Colorful dancers from Springfield joined the Mariachi Viva Xalisco from Tlaquepaque, Mexico, during the Sixth Annual Butterfly Festival/Sister Cities Fiesta on July 12. It was the first time for the combined event.



Concert fund-raiser: Love Song for all life

A limited number of tickets are still available for a concert at the Springfield Art Museum at 6:30 p.m. on Aug. 21, featuring Richard Patterson and Bettine Clemen performing in concert to benefit the kitchen/sensory garden. The concert will be followed by a wine and hors d'oeuvres reception and silent auction to benefit the planned Sensory Garden.

The Sensory Garden will include raised beds labelled in Braille, an indoor/outdoor kitchen classroom, water features, chimes and special areas to inform sight, sound, fragrance, touch and therapy gardens.

Bettine Clemen is already familiar to many of us from previous concerts. This year, she will be joined by acclaimed



Bettine Clemen



Richard Patterson

guitarist Richard Patterson at the Springfield Art Museum in a performance entitled "A Love Song for All Life." The concert will feature light classics, Latin, pop, and ethnic music combined with stunning film from nature

all over the world. Tickets are \$45 (\$50 at the door), and can be purchased at the Botanical Center, in the gift shop at the Springfield Art Museum, Waverly House Gifts & Gallery, 2031 S. Waverly, or online at FriendsOfTheGarden.org. There will also be a silent auction of works by local artists.

The Sensory Garden will span more than three acres in the Springfield Botanical Garden at Nathanael Green/Close Memorial Park. The garden will be a special place to be enjoyed by all, including those recovering from a traumatic injury, or those with a disability or sensory impairment. The entire garden will be labeled in Braille and will be wheelchair accessible.

**VISIT FOG
ONLINE
CLICK HERE**



Profile: Bill Aldrich

Page 2: If you're a frequent visitor to the Rose Garden, introduce yourself to Bill Aldrich, caretaker for one of our first gardens.



Hosta Garden celebration

Page 6: The Greater Ozarks Hosta Society steps onto the national stage as one of 18 National Display Gardens.

If you're reading this newsletter online, many items are hyperlinked to the Internet for further information.

AboutFOG

Vol. 9, No. 4, August/September 2014

P.O. 8566, Springfield, Mo. 65801

Friends of the Garden is a non-profit 501(c)(3) corporation founded in 1999 to develop the Close Memorial Gardens, located at 2400 South Scenic in Springfield, home of the Springfield/Greene County Botanical Center. We seek a dynamic relationship with other organizations working to benefit the park gardens. This newsletter is now published six times a year in print through Ozarks Living Magazine and delivered online as well to members. Past issues and other information can be found at www.FriendsoftheGarden.org.

Officers:

President: Lisa Bakerink

Vice-president: Bob Childress

Secretary: Avis Holloway

Treasurer: Brent Bothwell-Palmer

Board of Directors:

Terms ending October 2014

Deanna Armstrong, J.J. Averett, Lisa Bakerink, Brent Bothwell-Palmer, Patrick Byers, Susan Cardwell, Marthe Close, George Freeman, Avis Holloway, Heather Parker, Kauleen Volentine, Cindy Willis.

Terms ending October 2015:

Chris Barnhart, Carla Beezley, Susan Boswell, Kim Chaffin, Bob Childress, George Deatz, Jeanne Duffey, Mike Rankin, Betty Shook.

Terms ending October 2016:

Jack Crabb, Tom Finnie, Tom Lakowske, Mike Sidebottom, Don Snyder.

Advisory Board:

Don Akers, Ruth Arneson, Major Close, Stan Horsch, Bob Kipfer, Bill Roston, Nancy Schmidt, Gabrielle White, Ann Webster.

Ex-Officio:

Katie Steinhoff, Botanical Center coordinator; Peter Longley, Botanical Center horticultural interpreter.

Our Mission:

To inspire the discovery, understanding and appreciation of nature, by creating and maintaining the Springfield Botanical Gardens at Nathanael Greene/Close Memorial Park and by supporting the mission of the Springfield-Greene County Botanical Center and Park Board.

Profile:

Bill Alldrich sanitizes his pruners to avoid contamination of other plants in the Rose Garden. He is only the third adopter since the gardens were created.

Bill Alldrich

Rose Garden gets the organic treatment, and it works

This will be good news to anyone who loves roses as much as Bill Alldrich: Japanese beetles are mostly missing from the Rose Garden for the third straight year.

The unwanted pests scarcely showed up in 2012 and 2013, at least in the gardens. There is, however, a new face. Alldrich is only the third caretaker the rose garden has had.

Bill is certainly no stranger to gardening (or to gardening publications; for nine years he published *Chicagoland Gardening*, a terrific magazine that is still published by State by State Publishing.)

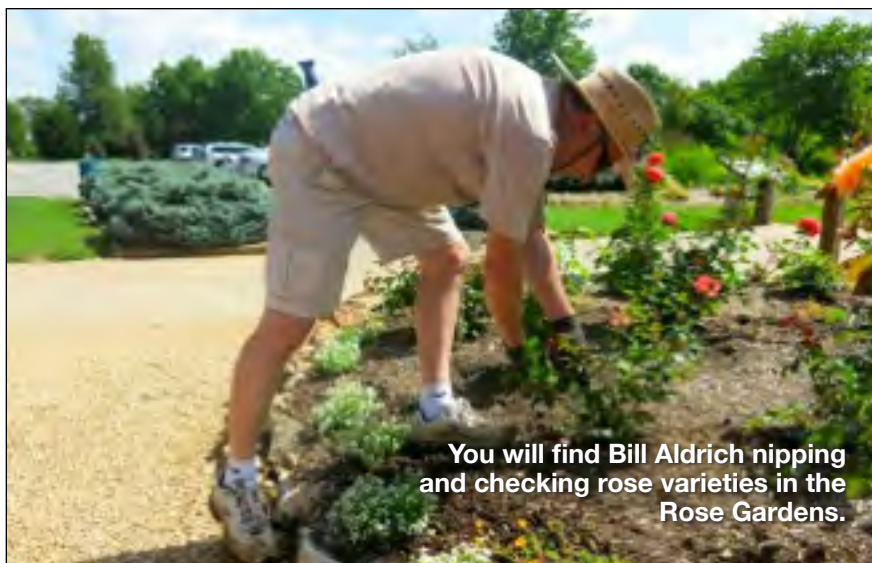
Upon retirement, he followed his wife, Beth, to Springfield, and volunteered to maintain one of our original gardens. With one stipulation; he wanted to try a

completely organic approach: no chemicals.

He did. And it's working.

"We didn't know if we would like moving away from the traditional cultural routine for roses, but the rose garden is looking fabulous this season," writes Katie Steinhoff. "Bill is really changing what we think about plant health by adopting organic fertilizer and pest control of the roses."

"Bill is showing us new and safer ways of tending to roses that we can all apply to our own gardens," says Lisa Bakerink, FOG president. "If you see him at work, don't hesitate to ask him about organic methods, and stay tuned because we all have much to learn about new ways."



You will find Bill Alldrich nipping and checking rose varieties in the Rose Gardens.

Garden Notes

from our friends

Looking back, going forward after 30 years

Master Gardeners of Greene County are preparing to celebrate three decades on Friday Oct. 3.

A reception is planned from 4-6:30 p.m. in the Nathanael Greene Demonstration Garden with Chef Craig von Foerster grilling vegetables and serving sandwiches. Entertainment will be provided by The Garbonzos, playing as they stroll through the garden.

At 7 p.m., Dr. Todd Lasseigne, president and CEO of the Tulsa Botanic Garden, will speak on plant collecting at the Darr Center.

Advance tickets are \$12 per person, available exclusively to all Master Gardeners of Greene county through July 31. Only 200 tickets are available.

On Aug. 1, tickets will be available to all other Southwest Missouri Master Gardeners. After Aug. 15, tickets will be \$15 per person. After Sept. 1, remaining tickets will be available to the public. Tickets are available in the Master Gardener Hotline Room.

Fall Garden Tour, Tiki Sampler on Sept. 20

Members of the Springfield Watergarden Society and Master Gardeners of Greene County host a Fall Garden Tour of eight gardens on Saturday, Sept. 20, from 1-6 p.m., followed by a Tiki Tour Sampler from 6-8 p.m. at the home of Ken & Mimi Grozinger at 3023 E. Avalon Drive.

Beginning Sept. 1, tickets go on sale for \$5 in advance and \$7 on the day of the tour at Garden Adventures, Maschino's, Schaffitzel's and Wickman's as well as the Master Gardens Hotline Room and the Botanical Boutique at the Botanical Center.

You can join the society for \$15 annually for a family membership. For another \$15, you can receive a printed copy of the monthly newsletter, or free online.

Ozark Daylily Society will dig and divide

Members will be digging, dividing and labeling in the Daylily Garden beginning at 8:30 a.m. on Saturday, Aug. 16. Volunteers will receive a choice of three daylilies and two fans. Membership is \$5 (\$8 for a couple) per year.

Butterfly House now has Facebook page

The new Bill Roston Native Butterfly House, now on Facebook where you can become a fan and enjoy this unique resource, the only one in Missouri and the Ozarks.

Observe native butterflies and learn about host plants and how to attract butterflies to your home landscape. Interpretive guides will help and answer your questions. Admission is free, but donations are accepted.

From the president: Membership offers many dividends



Lisa Bakerink

Recently, my husband, Randy (a great volunteer himself) and I saved \$30 in admission to the public gardens in Denver, more than our current annual dues (\$25). Katie Steinhoff had a similar experience (see page 5). If you travel, don't forget this dividend, the result of our membership in the American Horticulture Association. And please, remind others of this dividend.

We hope you enjoy the many benefits of membership, including complimentary admission (\$3 each) for two to the Mizumoto

Japanese Stroll Garden (excluding the Fall Festival), an annual subscription to *Ozarks Living* magazine including our bi-monthly newsletter, discounts at select local businesses, and free or reduced admission to more 270 public gardens across America. All these benefits are valued conservatively at between \$40-\$80 annually.

In 2015, Friends of the Garden will celebrate 15 years of bringing people, nature, and gardens together. The Japanese Stroll Garden will be 30 years old; the botanical center will be five years old.

As we plan for future garden projects and enhancements, it is no surprise that the cost of doing business in 15 years has increased. Our board has determined that an increase in membership pricing is necessary for continued growth and sustainability.

Beginning Sept. 1, 2014, Friends of the Garden annual membership levels will be adjusted as shown:

- **Individual:** \$35
- **Individual-Plus:** \$45 (individual and one other guest.
- **Family:** \$50 (families of three or more).
- **Garden Friend:** \$100 (includes the option to give an additional gift membership).
- **Garden Contributor:** \$250 (includes the option to give three additional gift memberships).
- **Garden Ambassador:** \$500 (includes the option to give six additional gift memberships).

No action is necessary at this time for your renewal. We simply wanted to give you advance notice of this change. At your individual renewal time, you will receive a letter detailing these changes specifically, including an option to choose the former membership pricing for up to one additional year. If you have any questions, please contact our office at 417-891-1650 and we will be pleased to assist you.

And please consider this: FOG members and volunteers, in partnership with our dedicated Springfield/Greene County Parks staff and other Park Partner organizations, have made our stunning gardens the Number One public attraction in Springfield as ranked by visitors to TripAdvisor.com. If you're not already one of us, we hope you'll join us, and make some great friends who love our gardens.

Lisa Bakerink is president of Friends of the Garden. Reach her by e-mail at info@friendsofthegarden.org, or at 417-891-1650.

Passes now required for commercial and professional photographers, videographers

The Springfield-Greene County Park Board has implemented a new photography policy outlining how photographers and videographers may operate in public parks.

While the passes are now available for purchase, the board is granting a four-week educational period before enforcement begins Aug. 15. Amateur and student photographers and videographers working without profit, as well as media photographers and videographers working for purposes of journalism, are not required to obtain a pass.

The new policy is designed to preserve public enjoyment of parks by addressing issues specific to professional and commercial photographers operating in public parks. The policy is available at parkboard.org/docs/photo_policy.pdf

The policy includes two sections. The first applies to all photographers, with basic rules designed to protect parks from unintended damage during photo shoots, like standing in flowerbeds and hanging equipment from trees. The second section outlines the procedure for commercial and professional photographers to obtain photo passes.



The board offers a \$25 Daily Photo Pass and a \$150 Annual Photo Pass for commercial and professional photographers and videographers, defined as businesses, companies, employees or individuals producing photographs and/or video for profit in parks.

"Photo passes are only required for professionals who are shooting clients' photos or video in parks," explains Jenny Fillmer Edwards, Public Information Administrator for the Park Board. "You don't need a photo pass if you're just out with your friends or family taking snapshots. But everyone – professionals and amateurs – needs to follow the rules."

New and renewing* members, memorials, tributes, garden donations

Memberships:

Akin, Janice*Allen,
HeatherAmbler, Hearld &
MarjorieAmes, John &
Patricia*Antila, TedArcher,
John*Arens, Margaret*
Arnall, Jim & Patty*
Babbitt, JillBacon, Jo
Ellen*Barker, Pauline
Barton, DanBechle, Jane*
Bernskoetter, Mark &
Rena*
Berry, LynnBird, Brad &
MaryBlack, KarlaBone,
Duane & Prudy*Byers,
Patrick*Caldwell, Mariel*
Carrier, Ron & Leslie*
Carter, Sandra &
Johnson, Len*
Cassity, JulieChumbley,
Ken & PennyClark, Cecil
J.Coates, Lee & Peggy*
Collins, Debra & Stephen*
Corbin, Tamra Jane
Dearing, ShirleyDonelan,
Andrew & Sarah Duncan,
Douglas & Linda*Earl, Ann
Eddy, Joyce & Ken*
Eichholz, Ralph*Eldridge,
BradEmge, Barb & Don*
Enderson, Dayle*Fels,
Ruth & MarkFort, Patricia*
Frazier, Jonathan & Ann
Freeman, Becky

Garrett, Patty*Glass,
Chris
Good Shepherd Pottery
Haag, Linda
Haase, Dorothy*
Handyside, Missy*
Hickey, Pat
Higham Patricia*
Hignite, Lisa
Hoffman, Traci*
Hollis, Ron
Hunter, Anita*
Hutchison, David
Hutchison, Kathy
Irby, Sara*
Jarvis, Teresa
Johnson, Dick*
Johnson, Shae*
Jones, AdaJones, Donna
Jo*
Jones, Keith & Jeanine
Justice, Marcia W.*
Keagy, Buck*
Keagy, Pat*Klos, Patricia*
Lawson, EmilyLiu, Mei C.
Lynn, Steve & Linda
Manuel, Dr. David
Coe, Betty*
Mattax-Neu-Prater Eye
Center, Inc.*
Matthews, Gail

McGinnis, Charles*
McGinnis, Jenny*
McLaughlin, Immanuel &
Ginnie
McMurray, Katherine
McQueary, Terri West*
Meyer, Susan & Tom
Monterastelli, June*
Patterson, Ryan & Kelly
Pearson, Mary*
Perez, Dr. Carlos &
Susan*
Perry, Joni & Dennis*
Raidel, BethRichards,
Melissa
Rogers, Lenyce*
Rose, Shannon
Rosenkoetter, Marcie
Schroeder, John*
Scott, Susan*
Scranton, Karen
Scroggs, Myra
Sharpe, Sheila
Shoemaker, Phyllis
Shull, Margo*
Shull, Mark*Simpson,
Matthew & Teresa
Smiling Sun LLC*
Spencer, Jim*Squires,
Patty*Stinson, Jeanne
Thornton, Matthew &
Jenny

Tracy, AmberTrends*
Tucker, George & Jan*
U.S. Peace CorpsVan
Weelden, Patty* Wheeler,
Jane*Wild Birds
Unlimited* Wilkerson,
Betty* Wilkinson, Terry*
Gift Memberships:
Bakerink, Lisa & Randy
Black, KarlaCardwell, Dan
& Susan Close, Major &
Marthe Johnson, Shae
Ward, Mike & JoAnn
Bricks & Benches:
Arneson, LauraBeezley,
Carla & RobertCherry
Court Garden Club
Federated Garden Clubs
of Missouri
Gann, Joe & Susan
Justice, Marcia W.Kellner,
Ben & Casey JoKnox,
Karyn & RobSmith, Jenelle
Stiles, Jim

**Garden Growth &
Maintenance:**
Kirkpatrick, Phillips &
Miller, CPA's
Macy's/Bloomingdale's
**Japanese Stroll
Garden:**
Close Charitable Trust

Federated Garden Clubs
of Missouri

Railway Garden:
Munson, Jean

Speaker's Gift:
Pink Dogwood GC

Azalea Garden:
Cohen, Irwin & Susan

Butterfly House:
Kipfer, Amy

**Butterfly Festival
Sponsors:**
Arneson, Ruth H.
Cardwell, Dan & Susan
Hogan Land Title Co.
Ozarks Screen Printing

Friends membership gives you access to great gardens

“I have used my membership card to gain access to nearly a dozen different gardens in the past year. Our members enjoy free or reduced admission to more than 270 botanical institutions across North America.”

Remember the Life Cereal commercial where two older brothers hear that this new cereal was supposed to be “healthy,” and they pass it on to their younger brother who “hates everything?” They are surprised to see that “Mikey likes it!” Some of you might be surprised at the diversity of things you can try when you get involved with the Friends of the Garden, and I think you might like it.

Here are just a few things you might consider trying



**A Parks
Perspective
Katie
Steinhoff**

One of my favorite benefits of being a Friend of the Garden is the reciprocal benefit we share as an institutional member of the American Horticultural Society. Our members enjoy free or reduced admission to more than 270 botanical institutions across North America!

I have used my membership card to gain access to nearly a dozen different gardens in the past year. Even if you only take a day trip to our sister gardens in Missouri, I think you'll like it.

The summer 2014 Lego display in the Missouri Botanical Garden's Climatron in St. Louis is a fun trek through the jungle with Lego sculptures tucked among the plantings. If you travel near Kansas

City and stop at Powell Gardens, you will see giant bronze bears and other wildlife set among their large landscapes.

Hopefully one day our city will be able to support a special exhibit set in our wonderful gardens and plant collections. Until then, try presenting your Friends of the Garden membership card at other botanical gardens and enjoy.

Our volunteers enjoy a unique benefit of being able to adopt a garden within the park and make it their own. Our rose garden adopter, Bill Aldrich (see Profile page 2), is really changing what we think about plant health by adopting organic fertilizer and pest control of the roses. We didn't know if we would like moving away from the traditional cultural routine for roses, but the rose garden is looking fabulous this season.

Meanwhile, our ornamental grass garden and general gardener, Mark, is coming up with clever color and ornamental/edible combinations around the Botanical Center. I didn't know if combining tomatoes, pumpkins, petunias and sunflowers would work, but Mark tried it in the west bed around the Botanical Center and lots of people like it.

Gardens of American History

Members of Friends of the Garden and their guests are invited to tour the “Gardens of American History” from Sept. 5-14, 2014.

The 10-day tour of American Historic Gardens will showcase the very best of garden collections, design and infrastructure. There will be an informational meeting at 6:30 p.m. on Wednesday, Aug. 13, at the Botanical Center.

Included in Price: 10 days, 14 meals: 9 breakfasts, 5 dinners, Round trip air from Springfield Regional Airport, Air Taxes, Fees, Surcharges, 5-star hotel accommodations and transfers, membership in the Royal Horticultural Society. Gardens include the New York Botanical Gardens, High Line Gardens, Chanticleer Gardens, Longwood Gardens, Ladew Topiary Gardens, Monticello, Colonial Williamsburg, U.S. Botanic Garden, Dumbarton Oaks and more! Rates are subject to change: Double occupancy: \$3,829; single \$5,219; triple \$3,779.

A trip abroad is planned for May 2015 and will focus on the Chelsea Flower Show and Gardens of London.

Jane adopted the mum bed and transformed it from a three-week color display into a fantastic four-season walk between the butterfly house and South Creek Trail.

If you'd like to try and adopt a garden, you can start today!

In September, we will launch our first “Traveling with Friends” opportunity through Collette Vacations and the Royal Horticultural Society.

A percentage of ticket sales will be reimbursed back to the Friends of the Garden, so this easy way to do something good for yourself while you support Springfield Botanical Gardens. Our next trip will be in May 2015 and will focus on the Chelsea Flower Show and Gardens of London.

There will be an informational meeting at 6:30 p.m. on Wednesday, Aug. 13, at the Botanical Center. Traveling with like-minded garden lovers is a great way to be introduced to new plants, food and future places to visit.

I hope you find the Springfield Botanical Gardens a place that has encouraged you to try new pathways to explore, new fruits, herbs and vegetables to taste, new plants to grow or try new hobbies like wildlife watching and photography.

Katie Steinhoff is Botanical Center Coordinator for the Springfield-Greene County Park Board. She is an ex officio board member of Friends of the Garden.

Concert featuring Bettine Clemen & Richard Patterson

benefitting the

Sensory Garden at Nathanael Greene/Close Memorial Park



Thurs., Aug. 21
6:30 p.m.
Springfield Art Museum

friendsofthegarden.org

891-1515

Concert will benefit Sensory Garden, but what's this all about?

Friends of the Garden welcomes back Bettine Clemen, joined by Richard Patterson, in concert on Thursday Aug. 21, in the auditorium at 6:30 p.m. in the Springfield Art Museum.

"A Love Song for All Life" will feature light classics, Latin, pop, and ethnic music combined with film from nature all over the world.

The concert will be followed by a wine and hors d'oeuvres reception. Tickets are \$45 (\$50 at the door), and can be purchased at the Botanical Center, the gift shop of the Springfield Art Museum, Waverly House Gifts or on line at www.friendsofthegarden.org.

There will also be a silent auction of works by local artists, including three original paintings by Peter Longley, horticultural interpreter at the Springfield Botanical Gardens.

Proceeds from the concert benefit the planned Sensory Garden, a project of the Friends of the Garden. The Sensory Garden will span more than three acres in

the Springfield Botanical Garden at Nathanael Green/Close Memorial Park.

The garden will be a special place to be enjoyed by all, including those recovering from a traumatic injury, or those with a disability or sensory impairment, says Longley. The entire garden will be labeled in Braille and will be wheelchair accessible.

"Phase One will be of special benefit to the physically impaired, and also feature an indoor/outdoor kitchen classroom to educate the taste buds," adds Longley.

"All beds will be raised to allow easy access for the handicapped, and water features and chimes will provide interesting sounds. The gardens will feature a sight area, sound area, fragrance area, a chocolate garden that has me curious, a Biblical garden, along with a touch and therapy garden for the (visually) impaired. The outdoor kitchen area will include an herb wall, and produce will be grown for healthy cuisine presentations to entice taste."

Biography of Richard Patterson

As a student, Patterson studied guitar with maestro Jose Tomas, returning to the United States where he was signed by the world's largest classical music management, Columbia Artists, for six seasons of critically acclaimed national tours as a member of the Ware-Patterson Duo.

During the same period, he toured internationally with Russian mandolin and balalaika virtuoso Emanuel Sheynkman as the duo Dvoika!, under the direction of David Lieberman Artists in Los Angeles. Patterson studied composition with Pulitzer Prize winners John Adams and Wayne Peterson and is Professor of Guitar at Notre Dame de Namur University in Belmont, Calif.

Patterson's compositions and arrangements can be heard in feature films and on television and radio in more than 30 countries. As the founder of the Omni Foundation for the Performing Arts, Patterson created one of the leading series of guitar performances in the world, currently in its 33rd season in San Francisco's Civic and Performing Arts Center.

In 2012, he appeared in the feature film "Five-Year Engagement," starring Emily Blunt and Jason Segel. He was a

member of the faculty of the New York Guitar Seminar in Manhattan for the summer of 2013.

Biography of Bettine Clemen

A native of Bavaria, Clemen is an internationally acclaimed flautist who has appeared on PBS TV and in more than 85 countries around the world. She has a special fondness for animals and often performs in their presence.

"Music is a bridge that connects us with all lifeforms," she says. "I feel connected with the spirit of the animals."

Clemen hails from Bavaria originally, and is considered one of the finest flautists in the world. She made her early reputation as a soloist with such prestigious orchestras as the Munich Bach Orchestra, the Mozarteum Orchestra of Salzburg, the Prague Radio Chamber Orchestra and the Belo Horizonte Symphony, and was featured in a PBS special, called "Flutasia, a Love Song for a Planet," and a critic for *The New York Times* once described her music as "one of those events that smiles out from the stage."

Her eclectic concerts merge many different styles of music ranging from light classical to pop, jazz and ethnic arrangements.

Feedback

If you noticed the photo (and how could you not) that is part of the Friends of the Garden newsletter, both online and in Ozarks Living, it was taken at dawn by Jason Stratton, who wrote this note of explanation. We liked it so much that we asked Jason if we could use it. He was happy to do so, and we're happy as well.

About the beautiful photo in our nameplate

The morning I took this photo it was cloudy and we knew there was a good chance of rain. I had my doubts that we would even see the sunrise. At about 6am the sun started to cut through the still clouds revealing the golden color seen in the photo. I snapped a couple shots with my cell phone camera and was lucky enough to get this one. Most of the time getting a good shot is all about being at the right place at a time when most people won't be there. Sunrise is definitely one of those times.

The Facebook bike group is called "Springfield Sunrise Coffee and Bicycle Club."

The club is open to anyone who wants to join us twice a month and watch the sunrise at a pre-determined location.

The group is open to any suggestions on where to meet. We all try to get there about 10-15 minutes before sunrise. Everyone brings their own coffee. I think there have been around six-to-eight people at most of the past get-togethers." Check the group's Facebook page, join the group and we will see you at our next gathering.

Also, feel free to visit my Instagram account. It is [@jasonstratton](#).

I post more photos there than I do on Facebook and it's an open account that anyone can follow.

*Jason Stratton
Springfield*

Ooohs and Aaaahs from visiting sisters

My sisters and niece were out visiting from California last week and one of our adventures was the gardens—they had a blast and were overwhelmed by how gorgeous the gardens were. We included the Japanese Stroll Garden and Butterfly house in our day—hearing their ooos and ahs during our time there was priceless and made me SO proud of living here where we have constant access to that glorious site.

*Laurie Duncan
Education Director
Discovery Center of Springfield*

Grow With Us! Become a Friend of the Garden

We're individuals & families who support the Botanical Center & Gardens in its mission to provide outstanding botanical, horticultural and environmental education opportunities for people of all ages. Anyone with an interest or appreciation in nature who wishes to support

the progress of the gardens is encouraged to join. Your interest in being a member is the first step in making a lasting difference in the ongoing development of the Botanical Center & Gardens. As a member, you're a partner in the future of the gardens.

membership levels

- ☐ \$ 500 Benefactor
- ☐ \$ 250 Patron
- ☐ \$ 100 Sponsor
- ☐ \$ 50 Contributor
- ☐ \$ 25 Friend
- ☐ **renewal**
- ☐ **additional donation**

\$

gift memberships available at all levels



- ☐ wedding ☐ birthday ☐ in honor of *
- ☐ holiday ☐ anniversary ☐ other *

corporate sponsorship

- ☐ \$1,000 Platinum
- ☐ \$ 500 Gold
- ☐ \$ 250 Silver
- ☐ \$ 150 Bronze

lasting dedications

- ☐ \$800 Four Foot Bench*
- ☐ \$500 Tree* ☐ \$250 Shrub*
- ☐ \$100 Engraved Brick, Butterfly House*
- ☐ \$ 50 Engraved Brick, White Garden*

*specify person or event, email for details

receive newsletter via: ☐ Snail Mail ☐ Email

name

address

city

state

zip

email

phone

8.2013

gift recipient *

address

city

state

zip

email

phone

Mail & Payable to: Friends of the Garden | PO Box 8566 | Springfield MO 65801



I'd Love to Volunteer!

- ☐ in the gardens
- ☐ in the FOG office
- ☐ festivals & events: FOG booth
- ☐ festivals & events: activities
- ☐ children's activities
- ☐ butterfly house docent
- ☐ marketing & development
- ☐ hardscaping & construction
- ☐ tell me what you need!
- ☐ I have a special talent:

Member Benefits:

- Friends of the Garden Membership Card
- Free Season Admission for Two into the Mizumoto Japanese Stroll Garden (excluding the Japanese Fall Festival)
- 10% off at Smiling Sun, Garden Adventures Nursery and the Botanical Center Gift Shop • Volunteer Opportunities
- Ongoing Learning • Fully Tax Deductible
- Subscription to the Friends of the Garden Newsletter
- Special Invitations to Friends of the Garden Member Events
- Form Lasting Friendships • Give Back to Your Community
- Events: Butterfly Festival, Monarch Tagging, Santa & Friends
- 10% off at O'Quinn's Water Gardens on plants & fish
- FOG members have access to a wide array of botanical gardens, arboreta, and conservatories throughout North America offering special admission privileges and many other benefits.

http://www.ahs.org/events/reciprocal_events.htm

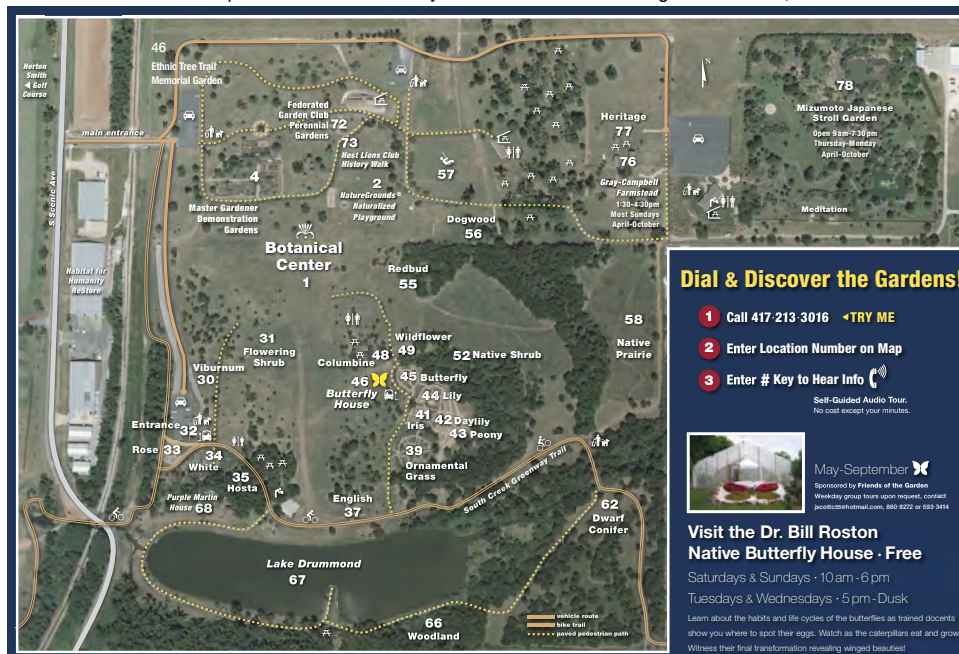
8/2014

Upcoming Events of interest to gardeners in the Ozarks*

- **Aug. 16: Learn to Build Your Own Watergarden;** 1-3 p.m.; members of the Springfield Watergarden Society members; tips, tricks and hints they wish they knew before installing a pond in their backyard. Program includes filtration systems and what to consider to accommodate certain plants and fish.
- **Aug. 16:** 8:30 a.m.; Daylily Society members and volunteers will be digging, dividing and labeling. See details, page 2.
- **Aug. 24: A Love Song for All Life:** 6 p.m.; \$45 (includes reception); flautist and guitarist present a night of entertainment at the Springfield Art Museum for the benefit of the Sensory Garden. See story, page 5.
- **Aug. 30: Hosta Plant Auction;** 3-6 p.m.; specialty shade plants and hosta auction to benefit the Hosta Garden, including desserts, door prizes and raffle.
- **Oct. 3: 4-6 p.m.;** Master Gardeners of Greene County celebrate three decades; reception in the Nathanael Greene Demonstration Garden. See details, page 2.
- **Sept. 12-14:** Japanese Fall Festival in the Mizumoto Stroll Garden, sponsored by the Sister Cities Association.
- **Sept. 12 – 14, 2014:** 19th Annual Master Gardener State Conference (“Birds, Bees, Butterflies & Bats: Our Partners in Gardening”); Holiday Inn, 10709 Watson Road, St. Louis (1-800-972-3145); presented by the St. Louis Master Gardeners; sponsored by the Missouri Master Gardener Association, Inc., Missouri Botanical Garden and the University of Missouri Extension. More information is at www.momgconference2014.org.
- **Sept 20: 1-6 p.m.,** Springfield Watergarden Society and Master Gardeners of Greene County Fall Garden Tour of eight gardens; followed by a Tiki Tour Sampler from 6-8 p.m. at the home of Ken & Mimi Grozinger at 3023 E. Avalon Drive. Admission: \$5 in advance; \$7 at the event.
- **Sept. 20, 21: Gray-Campbell Farmstead Lifestyles Expo;** 11-4:30 Sat.; Noon- 4:30 Sun. Rediscover life in Springfield 150 years ago. Blacksmith, apple butter making, fiber arts and other demonstrations, crafts, clogging, storytelling and more. Farmstead includes the oldest house in Springfield and Liberty School, a one-room school house.
- **Nov. 7: 7:30-10 p.m.** Romance in the Garden will be after hours in the Mizumoto Stroll Garden. Tiki torches, paper lanterns and wishing lanterns for purchase to be floated in one of the three ponds. Light music and a romantic stroll will add to that special date night. Admission: \$5.

Unless otherwise noted, events are at the Springfield Botanical Gardens. Reach us by e-mail at News@FriendsoftheGarden.org, or find us on Facebook and Twitter.

Newsletter produced and donated by FOG board member George M. Freeman, editor of Ozarks Living Magazine and OzarksLiving.com.



Guide to the gardens

1. Master Gardeners Demonstration Garden
2. Winter Garden
3. Freedom Garden*
4. Viburnum Garden
5. Flowering Shrub Garden
6. Entrance Garden
7. Rose Garden
8. White Garden
9. Hosta Garden
10. Sensory Garden*
11. English Garden
12. Victorian Garden*
13. Ornamental Grass Garden
14. Terrace Garden*
15. Iris Garden
16. Daylily Garden
17. Peony Garden
18. Lily Garden
19. Butterfly Garden
20. Columbine Garden
21. Wildflower Garden
22. Rain Garden
23. Bulb & Tuber Garden*
24. Native Shrub Garden
25. Magnolia Garden*
26. Japanese Maple Garden*
27. Cercis (Redbud) Garden
28. Dogwood Garden
29. Kickapoo Edge Prairie Garden
30. Flowering Tree Garden*
31. Pendula Garden*
32. Rock Garden*
33. Dwarf Conifer Garden
34. Conifer Garden*
35. Perennial Garden*
36. Wetland Garden*
37. Woodland Garden
38. Fragrant Garden*
39. Fern Garden*
40. Secret Garden*
41. Federated Garden Clubs Garden
42. Biblical Garden*
43. Azalea Garden
44. Heritage Garden
45. Mizumoto Japanese Stroll Garden
46. Ethnic Tree Trail Memorial Garden

*Planned gardens

Take the right turn to get to the gardens

Visitors to Springfield Botanical Gardens often describe the experience as an unexpected adventure. But of course you've got to get there to enjoy it. This aerial map will help you get around Nathanael Greene Park and the adjoining Close Memorial Gardens, located at 2400 S. Scenic. You can locate each garden numerically at right. Those with an asterisk* are planned but not yet under construction. A "Guide By Cell" tour of the garden parks is available by calling 417-213-3016. After a brief introduction, callers may dial a garden code on each sign followed by the # key (For example, 35# is the Hosta Garden) for information on various gardens. Introductions for every garden have been recorded, with signage in place listing the corresponding numbers to hear about each garden.