

# Friends of the Garden

Join us Jan. 10 for the annual membership meeting and grow with us

## Getting there is only half the fun

With any organization, people are the glue that binds us together. Combining, sharing and building on the energy that comes from working together made the Springfield Botanical Gardens come to life, and will keep us growing as an organization.

A year of hard work and plenty of opportunities for input have produced a long-term guide to take us to the next level. The [Friends of the Garden Sustainability Plan](#) has been thoroughly discussed and vetted by the board of directors and now is available for your review online on our website. If you're reading this newsletter online, accessing the plan is as easy as clicking on the blue type above. Printed copies are also available.

The Sustainability Plan is our guide to how we proceed with further development of the gardens over the next several years. Not only does it serve our members, it's a plan we need to share with our stakeholders, benefactors and the communities we serve.

It begins to answer the obvious questions that guide people and nations: Where do we go from here and how do we get there?

It defines who we are to our park partners and other groups that we may ask for support. For example, the Sensory/Kitchen Garden is an obvious next step forward to serve our community.

The drawing on page 5 introduces the concept of the Sensory Garden to first-time visitors, but also to those who may not yet have heard of us.

The Sustainability Plan combines goals, strategies, resources and priorities into a guide for the future. Because as we all know, we need to move forward in a unified direction. Our development partners need to understand that direction before they are likely to invest



Nearly magical poinsettias like these will soon fill the atrium at the Springfield Botanical Center. Join us to celebrate your holiday season; meet Santa, Scrooge and friends.

in our plans. Make no mistake: grants and bequests aren't likely to fall in our laps. Foundations, families and corporations want to know how their financial contribution will be spent, and how we measure results.

Membership is crucial to the health of any organization. It defines us, permits us to achieve more than any of us could acting alone, and says to our community: "We're here for the long haul."

Friends of the Garden invites you to take an active role. How you do that is entirely up to you. At the least, we ask for your dues. At most, we invite you to think of the Springfield Botanical Gardens as a place to remember family and friends. Many of the special plants, trees, resting benches and even the bricks we walk on are a lasting legacy to remember someone who held extraordinary meaning in our lives.

Thanks to the generosity of the Close Family and more recently a growing list of others, the Ozarks now has gardens and collections as well as facilities for learning and enjoying nature. But beyond enjoyment, a walk in the gardens can be a teaching moment, a means to acquire and share knowledge with the next generation. Often we have referred to the gardens as a "Library of Plants," a guide to help in the selection of plants for your home. The Master Gardeners Demonstration Gardens give us an example on the best practices for growing fruits, vegetables, nuts and flowers. The Japanese Stroll Garden is both a place for solitude and meditation but also to learn about other cultures. Even this newsletter is a work in progress, a measure of our successes, and a celebration of how we do more together.

If you're reading this newsletter online, all blue type is hyperlinked to the Internet for further information.

VISIT FOG  
ONLINE  
CLICK HERE



### Profile: Tony Miller

Page 2: Tony Miller of Neosho offers his view of Sensory Garden design at the Botanical Center



### Outdoor Classroom

Page 6: Kyle Batson dedicated his Eagle Scout project to creating an outdoor classroom near South Creek, with a help from his Kickapoo friends

# AboutFOG

Vol. 7, No. 6, December/January 2012-2013

P.O. 8566, Springfield, Mo. 65801

Friends of the Garden is a non-profit 501(c)(3) corporation founded in 1999 to develop the Close Memorial Gardens, located at 2400 South Scenic in Springfield, home of the Botanical Center. We seek a dynamic relationship with other organizations working to benefit the park gardens. This newsletter is now published five times a year in print through GREENE Magazine and delivered online as well to members. Past issues and other information can be found at [www.FriendsoftheGarden.org](http://www.FriendsoftheGarden.org).

## Board of Directors:

### Terms ending January 2013:

Lee Coates, Kenny Knauer, Mike Ward, Gail Wright

### Terms ending January 2014:

Lisa Bakerink, Cindy Baird, Dorothy Brunskill, Susan Cardwell, Marthe Close, Avis Holloway Tom Lakowske, Bill Roston, Peggy Sauer

### Terms ending January 2015

J.J. Averett, Deanna Armstrong, Heather Parker, Patrick Byers, George Freeman, Brent Palmer, Kathy Sheppard, Kauleen Volentine, Linda Whiting

### Terms ending January 2016:

Chris Barnhart, Susan Boswell; Kim Chaffin\*, Bob Childress, Christine Chiu, Carla Beezley, Jeanne Duffey, Mike Rankin\*, Betty Shook\*.

## Advisory Board:

Don Akers, Ruth Arneson, Major Close, George Deatz, Bob Kipfer, Nancy Schmidt, Gabrielle White.

### Ex-Officio:

Katie Steinhoff  
Peter Longley

\*Elected Nov. 8, 2012

## Our Mission:

To inspire the discovery, understanding and appreciation of nature, by creating and maintaining the gardens at Nathanael Greene/Close Memorial Park and by supporting the mission of the Springfield-Greene County Botanical Center and Park Board.



Tony Miller on the job at the Southwest Center for Independent Living, and with his son, Seth.

Tony Miller's personal experience and professional training lends his expertise as a volunteer in designing sensory garden

Each day, Tony Miller leaves his family's home in Neosho to make an unlikely 70-mile trek to Springfield where he is assistant coordinator for Consumer Directed Services at the Southwest Center for Independent Living (SCIL).

That's a long daily haul for anyone, but for Tony it includes loading himself and his wheelchair into a specially equipped van. Both Tony and his wife, Serena, are quadriplegic (although both function as paraplegics).

He is a husband, father grandfather and gardener who has a keen interest in plans for the Sensory Garden, still on the drawing board for the Springfield Botanical Gardens.

"Tony has been the most dedicated member of the Sensory Garden Committee," says Nancy Hopkins. "His passion matches or exceeds mine for making this a garden for all."

Here is Tony Miller in his own words: "The first thing people notice is that I use a wheelchair for mobility. Nearly 22 years ago, my spinal cord was injured in a diving accident. Four years later, I finished up a bachelors degree and began working to assist others with disabilities.

"SCIL's core services are advocacy, independent living skills, training, information and referral, and peer support.

"I've been married to my wonderful wife, Serena, for 16 years and have four great children with ages ranging from four months to 23 years old, along with two beautiful granddaughters. My hobbies and

**"Tony has been the most dedicated member of the Sensory Garden Committee. His passion matches or exceeds mine for making this a garden for all."**

– Nancy Hopkins

interests include playing and watching sports with family, gardening to have fresh veggies in season and canned goods any time, as well as wood-working projects that meet functional needs and/or provide recreational enjoyment. My favorite wood project thus far is three chess sets for my older children that include wood chess boards, wood boxes for the chess pieces, and three ceramic chess sets.

"My wife and I started vegetable gardening in 1996 and we have been loving it ever since. Most of our raised garden beds were framed with rail road timbers and all of the beds have been filled with mushroom dirt. The raised beds allow us to reach the plants for easy tending. The raised beds are great as long as the ground isn't too wet for wheelchair access. We also use metal washtubs for increased and varied garden space. My wife is a creative cook along with being an excellent preserver of fruits, herbs, and vegetables.

"I am very excited and thankful to be part of the team bringing a Sensory Garden, Edible Garden, and outdoor Kitchen to Springfield."



## Ozark Garden Railroad Club delivers model trainloads of holiday spirit at center

The trains are here and the first snow has fallen, at least in the form of cotton wool that has created a winter wonderland on the annual Ozark Garden Railway Club's holiday exhibit in the atrium at the Botanical Center. The trains include 'Thomas the Tank Engine' whose eyes follow the track, in the lobby until the New Year, bringing holiday spirit through the remainder of the year. The our annual poinsettia display and Christmas decorations will be added in time for Santa's visit to the park on Sunday, Dec. 16.

The Ozark Garden Railway Club members are great park partners at the Springfield Botanical Gardens and are considering a permanent summer train garden.

## 'Dickensian' Tablescape last this year before Santa arrives on Dec. 16

On Dec.14, just two days before Santa's annual visit to the Botanical Center, Peter Longley will present the last tablescape for a while. "The Dickensian Christmas," will demonstrate a truly gala Christmas table around a theme from Charles Dickens' *Christmas Carol*, with an appearance by Ebenezer Scrooge himself as your Master of Ceremonies, perhaps in a better mood than he has been in literature. Call the Botanical Boutique Gift Shop, 417-891-1515 to make reservations for this festive evening. Seating is limited, so the earlier you call in the better.

## Ethnic Tree Trail honoree dies at 98

We were saddened to learn that Adalyn Cravens, one of the immigrants honored in the Ethnic Trail of Trees Memorial at Nathanael Greene Park and who was well-known in Springfield, passed away at 98 years of age.

She came to the U.S. from Canada in 1937; and worked as a legal secretary, nurse, and dental assistant. She was active in many organizations, including Friends of the Garden.

The Ethnic Trail of Trees that runs along the north border fence between Nathanael Greene Park and the U.S. Medical Center for Federal Prisoners honors 38 immigrants from 33 different countries and backgrounds all of whom had an unusual or interesting story to tell. Their individual stories can also be looked up online at The Library Center web site. Adalyn Cravens' tree is No. 5.

## New pump at Japanese Stroll Gardens

A new pump and water lines at the Japanese Stroll Garden are awaiting construction of a filter for the pump. The pump will circulate water between the upper and lower water features.

Don and Nancy Schmidt, chairs of the committee doing renovations, hope to have everything installed, tested and ready for opening day in April. The garden is now closed for the season, and significant landscaping changes are being made.

You can create a...

# Lasting Legacy to the ones you love at The Springfield Botanical Gardens

Next time you visit the Springfield Botanical Gardens, look around you for the memorials honoring family and friends. It's likely you will find the name of someone you know as you relax on a bench or tread a brick-lined entry to several gardens. Or view a tree, plant or even an entire garden.



The Springfield Botanical Gardens are increasingly being recognized for many names that together make up the whole of what we are all about.

We are the home of Nathanael Greene, the Mizumoto Japanese Stroll Gardens, Gray-Campbell

Farmstead, the Close Memorial Gardens, and special events such as the Butterfly Festival, the Japanese Fall Festival, Kite Festival in spring and a popular location for weddings near every weekend in season. As years go by, many of us will have special memories of the gardens.

The notion of a "memorial" comes up often in conversation because of opportunities to create a "lasting legacy" to those we want others to remember. A legacy covers many possibilities from loved ones lost to lost love and even first love.

Friends of the Garden wants to make it as stress-free as possible to consider a lasting legacy. A brochure explanation detailing memorials has been prepared for easy mailing and distribution.

From a single brick with a special thought, event or loved one in mind, to a single bench, tree or shrub, to an entire garden, Friends of the Gardens invites you to consider a lasting legacy.



# Garden Notes other good stuff

## New board members elected for 2013

Friends of the Garden has elected three new board members and re-elective five current members. Newly elected board members are Kim Chaffin, Mike Rankin and Betty Shook. Re-elected to a second term were Chris Barnhart, Carla Beezley, Bob Childress, Christine Chiu and Jeanne Duffey. Terms are three years.

**Terms ending January 2013:** Lee Coates, Kenny Knauer, Mike Ward, Gail Wright.

## Terms ending January 2014:

Lisa Bakerink, Cindy Baird, Dorothy Brunskill, Susan Cardwell, Marthe Close, Avis Holloway Tom Lakowske, Bill Roston, Peggy Sauer.

## Terms ending January 2015

J.J. Averett, Deanna Armstrong, Heather Parker, Patrick Byers, George Freeman, Brent Palmer, Kathy Sheppard, Kauleen Volentine, Linda Whiting.

## Terms ending January 2016:

Chris Barnhart, Kim Chaffin\*, Bob Childress, Christine Chiu, Carla Beezley, Jeanne Duffey, Mike Rankin\*, Betty Shook\*.

## Advisory Board:

Don Akers, Ruth Arneson, Major Close, George Deatz, Bob Kipfer, Nancy Schmidt, Gabrielle White.

## Ex-Officio:

Katie Steinhoff, Peter Longley

## Two 'garden carts' now in operation

If you see a couple of what appear to be golf carts scooting around the gardens, fear not that someone from Horton Smith Golf is looking for a lost golf ball. These are reconditioned "garden carts" purchased recently by Friends of the Garden through private funding to reduce the number of full-size vehicles volunteers were using to haul their gear. In addition to the solar tram, the carts may also be used to transport special guests who require assistance during their visit.



Thanks to a private donation, Friends of the Garden now has two garden carts for use by volunteers who previously used their own vehicles at some risk to visitors, plants and sprinklers.

# Around & about the Gardens

## Butterfly House sets new records

A total of 22,448 people visited the Butterfly House in the months of April through early October, nearly 5,500 more than last season, says Lisa Bakerink, chair of the committee.

"This was largely due to an expansion of days and hours made possible by a greater volunteer base," says Lisa. "Thanks to a volunteer group that continued growing in number throughout the season, the house was open most weekday evenings and many daytime hours during the week as well."

A total of 60 volunteers posted nearly 3,800 service hours in collecting butterflies, growing plants, raising stock, watering, weeding, pruning, hosting tours, and working scheduled shifts, greeting and educating visitors.

"We had and have a great group of docents who love their work and who can't wait to share their enthusiasm of Lepidoptera with others."

The official opening this year coincided with National Public Gardens Day (May 11), a celebration of public gardens around the country. The house was open from 10 a.m.-6 p.m. and we featured an afternoon butterfly release inside the house. Prior to that, the

butterfly house was unlocked and open to the public during April to view the early spring butterflies that fed on the nectar from lilac blooms and other small flowers that had emerged with the early warm temperatures. A few unwanted visitors this year were a variety of a dozen or so birds that found breaches in the netting of



the house and were able to come in and dine for periods of time at our butterfly and caterpillar buffet. Plans are in the works to make some reinforcements for next year.

**Instar**, our very hungry caterpillar (at left) who feeds on dollars and coins, filled up with \$2,050 in donations this season. Our thanks to Buck Keagy for this creative way of encouraging donations to the house.

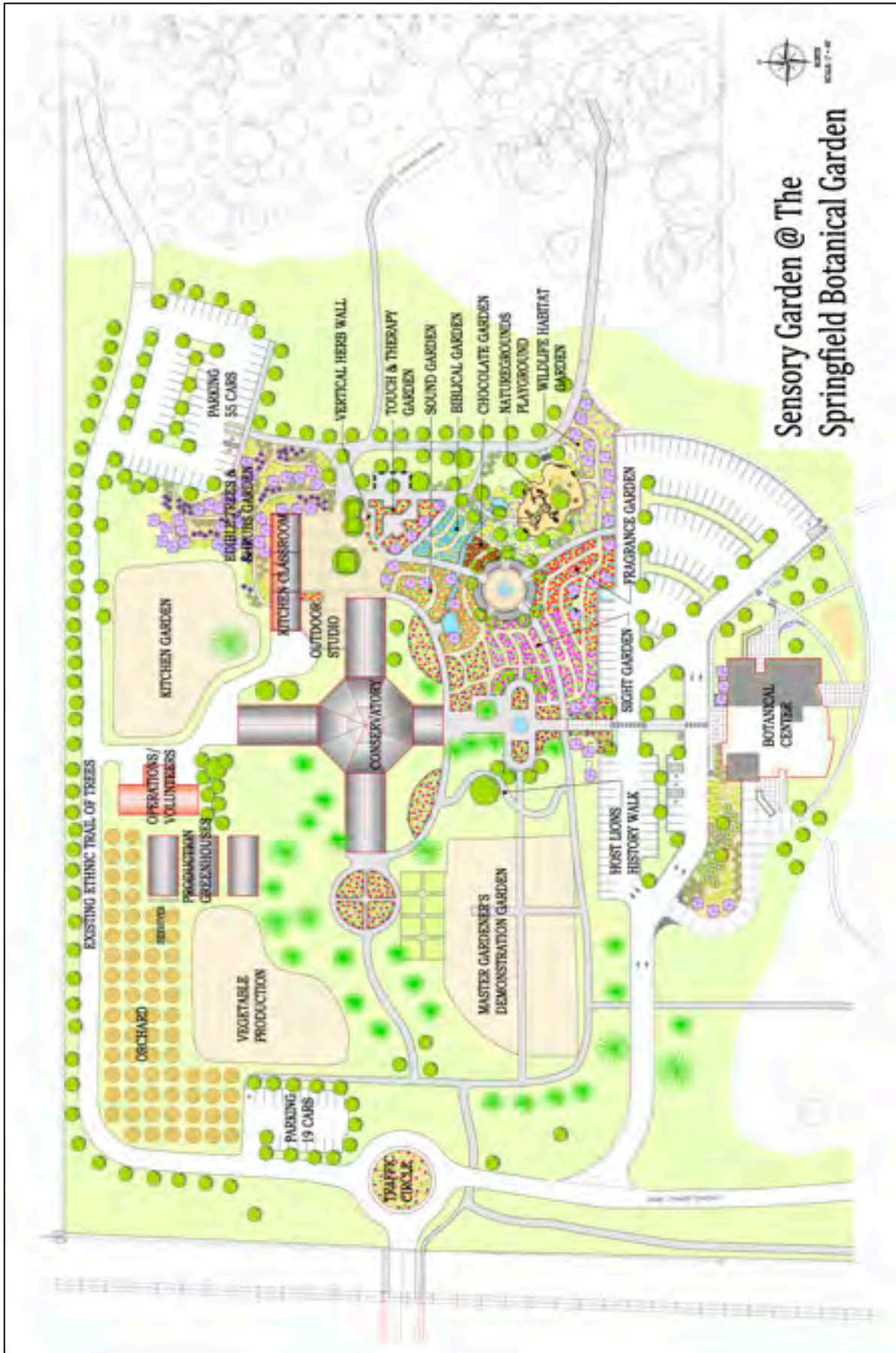
Around \$250 in additional revenue was generated from group tours. We were host to approximately 17 private tours through the house and one off-site educational program at a

local pre-school. More than 1,000 children and adults participated in these educational tours. We also hosted two groups, one from Arkansas and one from Oklahoma, who have started native butterfly houses in their respective areas and who wanted to see our operation first-hand. Both groups were very grateful for the time, education, and ideas they received.

As of Oct. 7, the butterfly is closed until next April. Work, planning and thinking about all that we do continues. You are welcome to join us in educating our visitors about native Missouri butterflies.



Lisa Bakerink



“If one of their senses is impaired, like their sight, they can still smell, touch and taste. If their hearing is impaired, they can see, smell and touch. I want to support this. It is my passion.”  
 – Bettine Clemens

# New and renewing\* members, memorials, tributes, garden donations

## Memberships

Albers, Lolita & Carl\*  
 Allen, Teresa\*  
 Atterbury, Will  
 Awbrey, Diane & David\*  
 Baird, Rob & Sally\*  
 Baker, Paul & Jennifer\*  
 Behle, Elizabeth\*  
 Beintema, Georgeanne\*  
 Bender, Harold & Lee Ann\*  
 Bennett, Eleanor L.\*  
 Black, Karla  
 Bollinger, Jon & Roxie\*  
 Bowen, Colin  
 Boyce, Julia\*  
 Boyer, Martin & Cheryl\*  
 Brockman, Rick\*  
 Brown, Maria  
 Buckner, Joann  
 Burgess, Ruth\*  
 Burgess, Sharon\*  
 Chilton, Sue  
 Clark, Jerry\*  
 Clarke, Michael S.\*  
 Claxton, James & Nancy\*  
 Crabb, Carol\*  
 Crouch, Liz\*  
 Daugherty, Susan & Kevin\*  
 DeGeere, Tom\*  
 DeRubis, Sharon\*  
 Dockery, David & Nena\*  
 Duffey, Jeanne\*  
 Dye, Tom & Joy\*  
 Emmons, Terri & John\*  
 Ford, Nola\*  
 Frank, Susan  
 Fusselman, Jon & Sue\*  
 Garbarino, Kenneth & Karon\*  
 Garland, Cliff\*  
 Gerhart, Carol & Gerry\*  
 Getty, Gerald A.\*

Gintz, Stephen & Anna\*  
 Hackeson, Debbi\*  
 Hageman, Win\*  
 Harris, Marjorie\*  
 Haynes, Rick & Sherry\*  
 Higham, Patricia\*  
 Hilton, Dorothy\*  
 Horny, Karen\*  
 Horton, Clara\*  
 Huston, Sandra & Jerry\*  
 Jones, Michael & Carolyn  
 Joslyn, Dottie\*  
 Keagy, Buck\*  
 Keith Jr., Elvin & Carrie\*  
 Kelly, Margaret & Clark\*  
 Knauer, Kelly & Louise\*  
 Kristi Kittleson & Tom Cornett\*  
 Kufahl, Kathryn\*  
 Lejeune, Wendell\*  
 Letson, Sandra & Donald\*  
 Leverich, Heather  
 Lindenberg, Steven & Susan\*  
 Lipscomb, Gary & Betty\*  
 Lumpe, Jerry & Vivian\*  
 Macom, Louise  
 McCabe, Nancy  
 McCune, Judy & Paul\*  
 Metz, LeVerne\*  
 Meyer, Duane & Marilyn\*  
 Mountain View Garden Club  
 Myers, Kay\*  
 Nance, Jon & Jill\*  
 Neil, Louise\*  
 Nelson, Edie & Ron\*  
 Nice, David & Wilena\*  
 Nickels, Gus & Glyna\*  
 Obert, Sue\*  
 O'Brien, Jim & Barbara\*  
 O'Keefe, Georgia\*  
 Palchiff, Chris\*

Palmer, Brent Bothwell\*  
 Pearl, Tom & Peggy\*  
 Peterson, Juana\*  
 Platz, Cynthia  
 Putman, Bryon & Linda\*  
 Rane, Carolyn  
 Rasoumoff, Sandy\*  
 Ratzlaff, Roger & Zina\*  
 Reynolds, Linda\*  
 Riggs, Peggy\*  
 Robbins, Tim & Jessica\*  
 Roberts, Bill\*  
 Sauer, James & Peggy\*  
 Schatz, James & Margaret\*  
 Schubert, Anne\*  
 Schuble, Sue\*  
 Shadwick, Stephanie  
 Sheets, Doris F.\*  
 Shepherd of the Hills Garden Club\*  
 Shifrin, Dr. Craig\*  
 Smyth, Nancy  
 Smith, Sally & Donald\*  
 Stekete, Ann and Craig\*  
 Stewart, Charles & Roberta\*  
 Sturdevant, Mary & Dave\*  
 Taylor, Elizabeth\*  
 Thomas, Jean\*  
 Thompson, Debbie & Galloway,  
 Dane  
 Thorne, Bobette\*  
 Thurman, Dorothy\*  
 Tilley, Josette & Mike\*  
 Toll, Marty  
 Touhey, Terry Ann\*  
 Trippe, Vicky & David\*  
 Tursi, Patricia P.  
 Tyndall, Laura  
 Wachtler, Ron & Sheryl\*  
 Wagoner, Nancy & William\*  
 Walker, Patricia White\*

Ware, Alan & Pat\*  
 Williams, Gee, Jim Stiles\*  
 Wilson, Randy & Marge\*  
 Witty, Eugene and Sandy  
 Woods, Virginia & Kenneth\*  
 Woolley, Pat  
 Wreath, Janet\*  
 York, Darrel\*  
 Yu, Xiang M.\*

Kirkpatrick, Phillips & Miller,  
 CPA's

## Peace Garden

Collins, Charley

## Sensory Garden

Hopkins, Nancy & Young, Todd  
 Largent, Leonard & Carmen  
 Pink Dogwood GC

## Benches

F&H Food Equipment Co.

## Bricks

Buckner, Joann  
 Burbee, Mary Jo  
 Close, Major & Marthe  
 Friends Of The Garden  
 Holden, Jeannie  
 Hopkins, Nancy & Young, Todd  
 Hopkins, Nancy & Young, Todd

Kellner, Ben & Casey Jo  
 Mullis, Karen  
 Ramsey, Anne  
 Ratliff, Lauren  
 Santer, Richard & Ruth  
 Springfield Greene County  
 Parks  
 Springfield Watergarden  
 Society

## Trees

Casey, Tim & Debbie

## Winter Garden

Brockschmidt, Barbara

## Gift Memberships

Cardwell, Dan & Susan  
 Cardwell, John  
 DeRubis, Sharon  
 Digirolamo, MaryFrances  
 Melton, Michelle Welch  
 Parrish, Stan & Susan  
 Shadwick, Sara

## Growth & Maintenance

Shepherd of the Hills Garden Club

## In-Kind Donations

Barnhart, Chris & Debra  
 Bone, Duane & Prudy  
 Hopkins, Nancy & Young, Todd  
 Success Naturally Yoga

## Membership Picnic

Ameson, Ruth H.

## Memorial Donations for

### Patricia Lewis

Black, Jeanette  
 Dolejsi, Joanne

\*Since the last newsletter. If you see an error, omission or correction, please bring it to our immediate attention at [News@FriendsOfGarden.org](mailto:News@FriendsOfGarden.org).

# 'Tis the season for Santa, poinsettias, model trains and our gift shop

With the holidays upon us, Friends of the Garden is unabashed in reminding you that a membership is the perfect gift for stockings, mailing and encouraging others to learn about gardening.

Plan to visit the **Botanical Boutique**, the gift shop off the atrium at our Botanical Center. Members of Friends of the Garden get a 10 percent discount on any item in the store. If you are not a member already, you can sign up while you shop, join online or fill out the membership form on Page 7.

From Noon to 4 p.m. on Saturday, Dec. 16, Santa and his elves will be celebrating the season in the Atrium. Remember, too, that all through December our atrium at the Botanical Center will feature a holiday display presented by the Ozarks Garden Railway Society with a model railroad featuring Thomas the Tank Engine among a selection of exotic poinsettias and a Christmas tree.

Several local artists have items for sale in the boutique. These include Jim Stewart's gourd carvings; Terry and Gabe Bloodworth and Dani Underwood's blown glass items from Springfield Hot Glass, featuring pumpkins, apples, pears, eggplants, and colored glass flowers among other brightly colored ornaments. If you don't want to go outside to pick pine cones, the gift shop has ornamental cones collected from the parks. Other art pieces can be found from Funghi Décor where Linda Passeni creates her mushroom sculptures; Friends of the Garden member Stan Horsch has created wood turnings for sale. You will also find Sculptor James Hall III's limited edition bronze replicas of "The Butterfly Girl" cast from the small scale model of the full-size statue in the Butterfly Garden.



Two members of the Ozark Garden Railway Society, Tom DeGere, left, and Jean Munson, right, with the holiday train display in the Atrium through the holidays. Below, Eva Laurence, 3, turns on the trains with some encouragement.



If you look around, there are lots of stocking stuffers in the boutique from Garden Friend bead jewelry to earrings and anklets, along with many small items on butterfly and insect themes, and kaleidoscopes, coloring books, and puzzles. Interesting toys can also be found with educational content like the solar powered robots and wind powered sailers. For the young botanical scientist, take a look at the 'Root Viewers' where you can see the formation of carrots, radishes, and onions grown from seeds. You can build your own birdhouse from a kit, or make a mosaic window. There are kites, and even miniature toy golf clubs. There are aprons and tote bags created by Jo Ferguson, and flautist Bettine Clemen's 'Forever' CD's is available.



One of the most popular destinations for young families is the playground just a few steps north of the Springfield Botanical Center. With convenient parking, it's a favorite destination for a walk in the park for all ages. The

playground's plush padded surface offers a soft landing for young visitors as well as the latest in climbing challenges, slides, merry-go-rounds and seating. Several more playgrounds are located throughout the gardens.

## Grow With Us! Become a Friend of the Garden

We're individuals & families who support the Botanical Center & Gardens in its mission to provide outstanding botanical, horticultural and environmental education opportunities for people of all ages. Anyone with an interest or appreciation in nature who wishes to support

the progress of the gardens is encouraged to join. Your interest in being a member is the first step in making a lasting difference in the ongoing development of the Botanical Center & Gardens. As a member, you're a partner in the future of the gardens.

### membership levels

- \$ 500 Benefactor
- \$ 250 Patron
- \$ 100 Sponsor
- \$ 50 Contributor
- \$ 25 Friend
- renewal**
- additional donation**  
\$ \_\_\_\_\_

### gift memberships available at all levels

- wedding
- birthday
- in honor of \*
- holiday
- anniversary
- other \*

### corporate sponsorship

- \$1,000 Platinum
- \$ 500 Gold
- \$ 250 Silver
- \$ 150 Bronze

### lasting dedications

- \$800 Four Foot Bench\*
- \$500 Tree\*    \$250 Shrub\*
- \$100 Engraved Brick, Butterfly House\*
- \$ 50 Engraved Brick, White Garden\*

\*specify person or event, email for details

receive newsletter via:    Snail Mail    Email

name \_\_\_\_\_

address \_\_\_\_\_

city \_\_\_\_\_ state \_\_\_\_\_ zip \_\_\_\_\_

email \_\_\_\_\_ phone \_\_\_\_\_

11.2012

 gift recipient \*

address \_\_\_\_\_

city \_\_\_\_\_ state \_\_\_\_\_ zip \_\_\_\_\_

email \_\_\_\_\_ phone \_\_\_\_\_

**Mail & Payable to:** Friends of the Garden | PO Box 8566 | Springfield MO 65801



### I'd Love to Volunteer!

- in the gardens
- in the FOG office
- festivals & events: FOG booth
- festivals & events: activities
- children's activities
- butterfly house docent
- marketing & development
- hardscaping & construction
- tell me what you need!
- I have a special talent:

### Member Benefits:

- Friends of the Garden Membership Card
- Free Season Admission for Two into the Mizumoto Japanese Stroll Garden\* · Fully Tax Deductible (\*excluding the Japanese Fall Festival)
- Volunteer Opportunities · Ongoing Learning
- Subscription to the Friends of the Garden Newsletter
- Special Invitations to Friends of the Garden Member Events
- Form Lasting Friendships · Give Back to Your Community
- 10% off at Smiling Sun on any plant life
- Events: Butterfly Festival, Monarch Tagging, Santa & Friends
- 10% off at O'Quinn's Water Gardens on plants & fish
- FOG members have access to a wide array of botanical gardens, arboreta, and conservatories throughout North America offering special admission privileges and many other benefits.

[http://www.ahs.org/events/reciprocal\\_events.htm](http://www.ahs.org/events/reciprocal_events.htm) 11/2012

## An Eagle Scout to be creates a 'Lasting Legacy'

### Kyle Batson's Eagle Project will help others learn about nature of plants

Recent park visitors may have noticed a new water and creek ecology "outdoor" classroom created by Kyle Batson for his Eagle Scout project, just below the Edge of the Kickapoo Prairie Garden where South Creek enters the park. Kyle is a member of Nixa Troop 200.

To quote Katie Steinhoff:  
 "One of the strengths of the Springfield Botanical Gardens is that we have accessible nature. We have many ornamental gardens, but we also have mature trees, and access to South Creek and Lake Drummond, the Edge of the Kickapoo Prairie, a rain garden, and native plants. Teachers come to this site with confidence that even if they have students that are not comfortable outside, the Botanical Gardens have generous paved paths, restrooms and water fountains nearby, and a wide variety of plants and different types of habitats necessary for teaching different lessons."



Kyle Batson, and his father, Jeff, on the banks of South Creek. Behind them is the outdoor classroom that Kyle, his grandfather, uncle and friends built over three months.

Completed with plenty of help from Kickapoo friends, father, uncle and grandfather, Kyle's project includes benches, a small walking path, tree "cookies" for counting growth rings, a brush pile, steps to South Creek and native plantings. The next goal is to have activity backpacks by next spring that teachers can check-out from the Botanical Center to help lead activities through these garden sites.

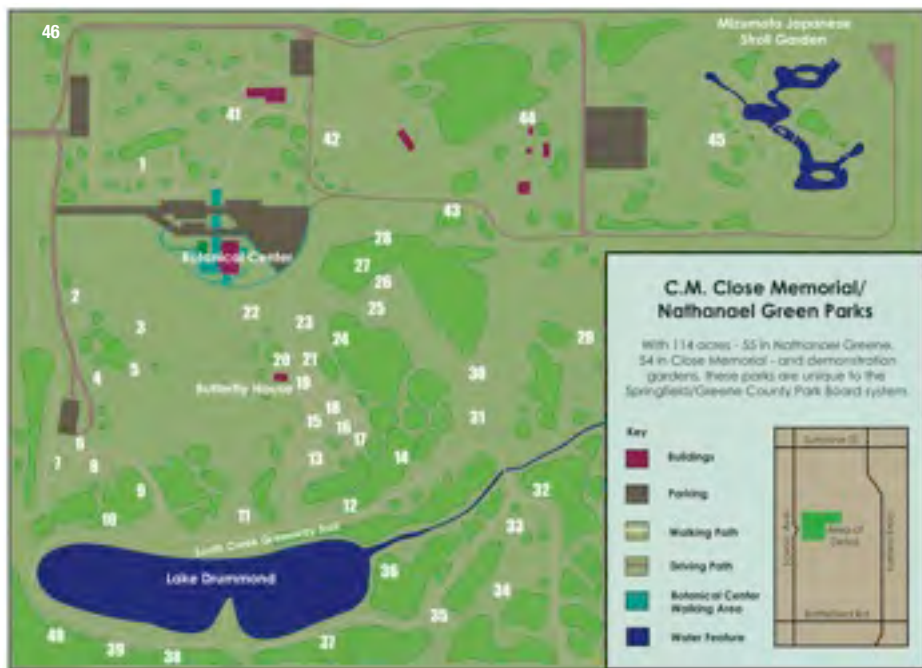
Guided or self-guided field trips can be coordinated through the Botanical Center.

### Upcoming Events\*

- **Dec. 1:** 10 a.m., Wreath-making workshop with Katie Steinhoff; \$25 fee and registration.
- **Dec. 1:** 1 p.m. Gray/Campbell Farmstead celebrates 'Christmas at the Farmstead' celebrated Christmas in the Ozarks as it might have been in the 1860s.
- **Dec. 13:** 5 p.m. FOG board meets.
- **Dec. 14:** Final Tablescape event, a Dickensian Christmas. Call 417-891-1515 for reservations.
- **Dec. 16:** Noon- 4p.m.; Santa Claus arrives with elves at the Botanical Center.
- **Jan 10:** Annual membership meeting.
- **Jan. 24:** 7 p.m., Springfield Organic Gardening Club; Room B, The Library Center.

\*Friends of the Garden is pleased to publicize timely events (mostly in the Botanical Center) as well as gardening events of regional interest. Please sign up for a weekly summary of events

Newsletter produced and donated by FOG board member George M. Freeman, editor of [GREENE Magazine.us](http://GREENE Magazine.us)



Graphic by Hannah O'Dell

## Take the right turn to get to the gardens

Visitors to Nathanael Greene/Close Memorial Park and Arboretum describe the experience as an unexpected adventure. But of course you've got to get there to enjoy it, and that can be a bit challenging. This map, which includes directions to the parks (inset map) as well directions for convenient parking, will help. If you are new to the gardens, you can locate each garden numerically at right. Those with an asterisk\* are planned but not yet under construction. A "Guide By Cell" tour of the garden parks is now available by calling 417-213-3016. After a brief introduction, callers may dial a garden code on each sign followed by the # key (For example, 35# is the Hosta Garden) for information on various gardens. Introductions for every garden, including the Ornamental Grass Garden (39#) have been recorded, with signage in place listing the numbers for each garden.

### Guide to the gardens

1. Master Gardener Demonstration Garden
2. Winter Garden
3. Freedom Garden\*
4. Viburnum Garden
5. Flowering Shrub Garden
6. Entrance Garden
7. Rose Garden
8. White Garden
9. Hosta Garden
10. Sensory Garden\*
11. English Garden
12. Victorian Garden\*
13. Ornamental Grass Garden
14. Terrace Garden\*
15. Iris Garden
16. Daylily Garden
17. Peony Garden
18. Lily Garden
19. Butterfly Garden
20. Columbine Garden
21. Wildflower Garden
22. Rain Garden
23. Bulb & Tuber Garden\*
24. Native Shrub Garden
25. Magnolia Garden\*
26. Japanese Maple Garden\*
27. Cercis (Redbud) Garden
28. Dogwood Garden
29. Kickapoo Edge Prairie Garden
30. Flowering Tree Garden\*
31. Pendula Garden\*
32. Rock Garden\*
33. Dwarf Conifer Garden
34. Conifer Garden\*
35. Perennial Garden\*
36. Wetland Garden\*
37. Woodland Garden
38. Fragrant Garden\*
39. Fern Garden\*
40. Secret Garden\*
41. Federated Garden Clubs Garden
42. Biblical Garden\*
43. Azalea Garden
44. Heritage Garden
45. Mizumoto Japanese Stroll Garden
46. Ethnic Tree Trail Memorial Garden

\*Planned gardens