

Membership Picnic Oct. 7 (bring a guest); enjoy hot dawgs from the grill

Bring a guest; celebrate our success

Consider this a heartfelt invitation to a special picnic, not just for you but for a friend. Friends of the Garden is having a membership picnic, 11:30 a.m. to 1:30 p.m. on Sunday, Oct. 7, for people exactly like you – and friends like yours who share our passion for the public gardens. This is one of those times we want to say thank you to our volunteers for the thousands of hours you give to the gardens, whether you're leading or following.

"We have right at 1,000 members, and we appreciate each and every one," says Nancy Hopkins, president. "But we'd like to have 1,500, or 2,000. As a former educator, I can tell you how we get them. Each one come and bring one. It really is that simple if we all join in."

Whether you're jogging, or walking the dog, or hopping on the Ozarks' only solar-powered tram, we know you're almost always on your way somewhere. Now it's time for your destination to be the Springfield Botanical Gardens. We've got plans for you – drawings of the new Sensory Garden. Speaking of drawings, we've got door prizes.

For most of us who belong to Friends of the Garden, it's about the flowers and the trees.



Or the birds and the bees. Maybe even the ducks and the geese, so long as they keep to the calming waters of Lake Drummond – and don't devour the flowers.

And it's always about the people, working together tirelessly for more than a decade to bring about the Springfield Botanical Center.

And now the focus is on creating the Sensory Garden with its outdoor kitchen classroom, conservatory and production greenhouses. Truly, this will be a project that brings the Springfield Botanical Gardens in touch with all our senses – and it will be accessible to all.

But for some of us, it's also about the food, and the primal smoke wafting off the grill flavoring a couple hundred all-beef wieners

provided from Horrman Meats in Fair Grove with all the fixins,' and soft drinks provided by Coca-Cola of the Ozarks.

So join us as Friends of the Garden gets in touch with our inner taste buds on the second anniversary of the botanical center.

If you're one of the 1,000 or so members of Friends of the Garden, all you have to do is show us your membership card. Better yet, bring a friend. Surprise them, or make their dream of visiting a place like this come true. And don't worry, this event lasts only a couple of hours, 11:30 a.m. to 1:30 p.m., so you and your guest will have plenty of time to enjoy a free tram ride, stop to smell the roses; wander through the hostas; dilly-dally in the English Garden; peruse the largest ornamental grass collection in any public garden in the U.S., and get reacquainted with friends.



If you're reading this newsletter online, all blue type is hyperlinked to the Internet for further information.

VISIT FOG
ONLINE
CLICK HERE



Profile: Todd Young

Page 2: You have to get up pretty early to get ahead of Todd Young. He's young; he's restless, but not just another pretty face.



Farm Exposition

Page 6: You can help the 'Save Liberty' Committee move a one-room school to the Gray-Campbell Farmstead.

AboutFOG

Vol. 7, No. 5, October/November 2012

P.O. 8566, Springfield, Mo. 65801

Friends of the Garden is a non-profit 501(c)(3) corporation founded in 1999 to develop the Close Memorial Gardens, located at 2400 South Scenic in Springfield, home of the Botanical Center. We seek a dynamic relationship with other organizations working to benefit the park gardens. This newsletter is now published five times a year in print through GREENE Magazine and delivered online as well to members. Past issues and other information can be found at www.FriendsoftheGarden.org.

Officers:

Nancy Hopkins, President
Christine Chiu, Vice-president
Cindy Baird, Secretary
Brent Bothwell Palmer, Treasurer

Board:

Term ends October 2012

Chris Barnhart, Carla Beezley, Robert Childress, Christine Chiu, Lee Coates, Jeanne Duffey, Kenny Knauer, Mike Ward, Gail Wright

Term ends October 2013

Cindy Baird, Dorothy Brunskill, Tom Lakowske, Bill Roston, Peggy Sauer
Ex-officio term does not expire

Katie Steinhoff, Peter Longley

Re-elected to second term*

Term expires October 2014

Patrick Byers, George Freeman, Nancy Hopkins, Heather Parker, Kaileen Valentine, Cindy Willis

New elected board members*

Term expires October 2014

Deanna Armstrong, J.J. Averett, Lisa Bakerink, Brent Bothwell Palmer, Susan Cardwell, Marthe Close, Avis Holloway, Kathy Sheppard, Linda Whiting.

Advisory board members*

Term expires October 2014

Don Akers, Ruth Arneson, Major Close, Alan Hale, Stan Horsch, Robert Kipfer, Ann Webster.

Past President

George Deatz

*Elected Oct. 13, 2011

Our Mission:

To inspire the discovery, understanding and appreciation of nature, by creating and maintaining the gardens at Nathanael Greene/Close Memorial Park and by supporting the mission of the Springfield-Greene County Botanical Center and Park Board.



The parade crew with Todd Young fourth from left in front. Inset, Nancy, Todd and grandson, Jude.

Profile: Todd Young

Todd Young is often the president's necessary choice to do what must be done. "He's always there; he's always taking the initiative when there's no one else to ask," says Nancy Hopkins.

Todd Young doesn't need anyone to tell him what to do next. In fact, the question may have to do with how he does so much.

Last March, he laid down the paint brush from his regular job long enough to single-handedly create a Friends of the Garden float for the St. Patrick's Day Parade (See photo above).

More recently, he reconfigured his trailer with signage to promote the Butterfly Festival (above right), and then hauled it around for two weeks behind his truck to promote our premier event in July. And then – well you get the idea – but wasn't that Todd pouring sparkling wine at the Bettine Clemen Concert? And manning the booth at the Gray-Campbell Farmstead Pioneer Expo?

It isn't easy being the spouse of the president of Friends of the Garden, Nancy Hopkins, who also seems to have only one speed: fast. Except when she's doing yoga, or caring for grandsons Jack and Jude. Hey, Jude, let's meet in a few more years.

But it all makes sense if you know that Todd Young, painter and artist, has a creative streak. When he proposed, he rented a hot air balloon, so that Nancy could read his proposal painted on a field in giant letters. Presumably she said yes, but she also cracked her head hard enough to be knocked unconscious.

Todd Young has no formal title. He's not on the board; he's not on any committee. But he just gets the job done, often when it's one of those niggling tasks that the president has no one left – or perhaps willing – to get done.

His constant support of Friends of the Garden has led to unexpected successes, such as an electronic billboard donated by Larry Lipscomb at Pioneer Outdoor when he heard about the Fourth Annual Butterfly Festival.



Todd and Nancy at fall cleanup a couple of years ago in the Hosta Garden. Above, signage promoting the Butterfly Festival.



'Butterfly Festival attracts 1,000, raises \$3,200 through donations, silent auction

Cindy Willis, who has chaired the Butterfly Festival for each of its four years, has reported that nearly 100 volunteers donated more than 850 hours of time to make the festival possible.

Date for the 2013 festival is Saturday, July 20, which promises to be a perfect summer day for at least 1,000 people to enjoy the beauty and science of butterflies and moths.

Donations for the year made directly to the butterfly house totaled about \$2,000. More than 14,000 visitors have toured the facility. More than 1,700 volunteers hours have been donated to keep the facility open weekends and some evenings. There is no formal admission charge, but donations are accepted gratefully.

Concert raises \$5,700 for Sensory Garden

The second Bettine Clemen Concert, Flutes & Flutes, raised \$5,700 on Aug. 24 at Christ Episcopal Church. Bettine's concert, with accompaniment from the Harry Beckett Trio, was attended by more than 100 persons, many of whom stayed for a reception after the concert.

This brings the total funds raised for the Sensory Garden to \$35,000. The goal for the Sensory Garden is \$500,000. A breakout of various features of the garden is available for potential donors.

Debris removed from Japanese Stroll

More than six tons of garden growth has been removed from the Mizumoto Japanese Stroll Garden, much of it by volunteers. A half-dozen projects are planned during the winter months when the garden is closed for the season. Nancy and Don Schmidt, co-chairs of the committee that has been working to restore the garden, say a top priority involves replacing a pump that returns circulating water from one pond to another.

The stroll garden has a number of needs, including reworking of the recirculating water system. The Japanese gardens also have no irrigation system, necessitating manual watering.

The gardens were created by the Botanical Society of Southwest Missouri in 1984, which merged with Friends of the Garden in 2011.

Japanese Fall Festival signs 10 members

Brent Palmer, treasurer of Friends of the Garden, reports that 10 new members were signed during the 17th Annual Japanese Fall Festival, Sept 7-9. This despite the cancellation of opening ceremonies on Friday night because of an unexpected late summer storm that caused considerable wind damage to the stroll garden.

Total membership in Friends of the Garden is now 986, pending renewals from a number of members. Membership begins at a modest \$25 per year, which includes two year-round passes to the Japanese Stroll Gardens. The passes are good whenever the gardens are open, Wednesday through Sunday. The only exception is the Japanese Fall Festival, sponsored by the Sister Cities Association. Springfield's sister city in Japan is Isesaki.

Special thanks from FOG

Friends of the Garden thanks the following individuals, businesses and organizations for their incredible support of the Fourth Annual Butterfly Festival.

Festival Sponsors:

Ruth Arneson
Children's Orchard
Chipotle Mexican Grill
Ozarks Screen Printing

Event Sponsors:

Federated Garden Clubs
Ozark Piecemakers Quilt Guild
Southwest Missouri Camera Club
Springfield Music
Young Painting/Tangico

Our Vendors, Park Partners, and Guests:

Cherry Court Garden Club
Farah Rose
Fiber, Fun, & More
Girl Scouts of the Missouri Heartland
Discovery Center of Springfield
Greater Ozarks Hosta Society
Iris Society of the Ozarks
Master Gardeners of Greene County
Missouri Prairie Foundation
Ozark Daylily Society
Peggy's Flowers
Peighton's Place Handmade Soaps
Smiling Sun, LLC
Stone Effects
Southwest Missouri Camera Club
Springfield Conservation Nature Center
Springfield Dept. of Environmental Services/Show Me Yards & Neighborhoods
Missouri Prairie Foundation
Wickman's Garden Village

Thanks to All Our Contributors:

Action Tent Service
Andy's Frozen Custard
Black River Imaging
The Butterfly Palace and Rainforest Adventure
Dillons Food Stores
Federated Garden Clubs
General Rental Center
Gifts From the Heart
GREENE Magazine
HyVee Food Stores Inc.
Jumpin' Joey's
Lawrence Photo and Video
Merrily We Quilt Along
Mpix
National Art Shop
Nearly Famous Deli & Pasta House
Newk's Express Café
Noah's Art
Springfield-Greene County Park Board and Staff
TCI Graphics
Our dedicated volunteers

Garden Notes other good stuff

Winding down, gearing up; Volunteer Work Day Sept. 29

It may seem like we're winding down from the hottest year on record, or the driest year since the 1950s, and it's true that many plants have peaked, although many gardens are making a comeback.

Fall is the time when serious gardening occurs. One such work day (for those who get this newsletter online) is Saturday, Sept. 29. As part of National Public Lands Day, a **Volunteer Work Day** will include **tagging and releasing the hundreds of butterflies** that have spent the summer in the Butterfly House. As usual, children are invited as guests to participate in the tagging, which simply involves placing a tiny identifying number registered with Monarch Watch in Lawrence, Kansas. Further south, other volunteers will be watching for the arrival of tagged Monarch for counting purposes. And let's be clear: drought, heat and loss of habitat have not been kind to the Monarch population as it makes its annual migration to Mexico.

Following the release at 2 p.m., the netting on the house will be removed and stored for next year when the process of collecting and encouraging butterflies to join us for the summer is repeated.

Next year will be the first for the **Butterfly Propagation Garden**, where host plants will be grown specifically to satisfy the voracious appetites of these little creatures as they transmogrify from eggs to hungry caterpillars to chrysalis and then to beautiful butterflies and moths. (By the way, this is the time for watch for the Hummingbird Moth, which hatches from the Tomato Hornworm and then imitates hummers as it feels on late summer blossoms.)

We will also be joined by 30 or so college students from Missouri State University who will assist with various chores. If you're able, we hope you will join us. And if you're not, there are plenty of good deeds to be done along the way, and you're still welcome.

Meanwhile, much has already been accomplished. **The Garden Committee**, chaired by Bob Childress, has completed installation of irrigation for the Winter Garden, located between the Botanical Center and the south parking lot. Irrigation will also be in place next year for the **Propagation Garden**.

At 4 p.m. on Oct. 11, Patrick Byers with the Missouri Extension Service, has offered to train volunteers in the safe handling and application of garden chemicals.

Finally, **the Friends of the Garden Nominating Committee** chaired by Marthe Close has asked for an extra month to complete its work in identifying board members. The extension was approved by a unanimous vote and is in keeping with the time frame prescribed in the bylaws. Nominations will be presented at the next meeting at 5 p.m. on Oct. 11 in the Springfield Botanical Center, 2400 S. Scenic, in Springfield.

Around & about the Gardens

The Restorative Power of Gardens

"Mental sunshine will cause the flowers of peace, happiness and prosperity to grow upon the face of the earth. Be a creator of mental sunshine."

– **Kathi's Garden**

On a recent trip to St. Petersburg, Russia, formerly Leningrad, I learned a bit history that would truly change me in many ways. After World War II, Leningrad lay in ruins. Having been bombed, looted, vandalized by greed and reduced to rags from riches, an unfathomable amount of rebuilding was the only solution. The question was where to begin. Palaces, churches, mosques, parks and cathedrals were targets of destruction and all were screaming out for repair and restoration. At the Peterhof Palace, there are captivating pictures of the reconstruction process. The photos are extremely moving – touching the soul of the viewer – forcing reality into the senses of what man can and will do to man. I had never experienced these feelings before on this level. I was shocked but not shocked to know that the reconstruction began with the parks, gardens, fountains and water features. I was shocked because the buildings were so heavily damaged that it would take years to reconstruct the beauty that had once been commonplace and render them habitable. As a gardener I was not shocked by the logic of constructing the nature aspect first. People needed to once again see, touch, smell, hear and taste nature.



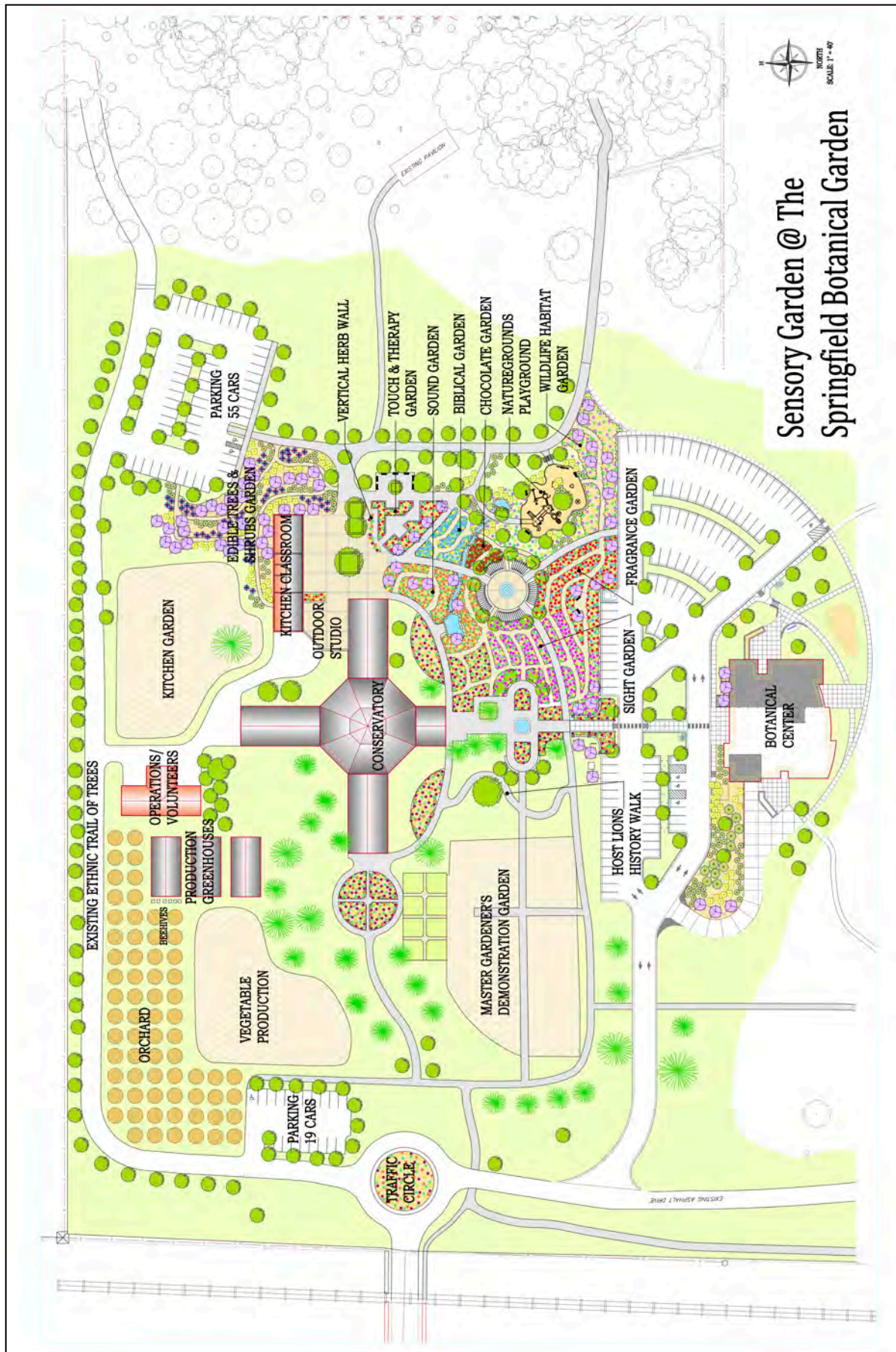
Nancy Hopkins

"A garden, no matter what size, can bring you into contact with the healing power of Nature", writes Lenore Small from the National Garden Clubs, Inc. Healing from war, the loss of family, friends and entire cities takes determination and passion, but it brings such joy. Studies have documented that there is a decrease in blood pressure and muscular tension within four to five minutes after viewing a natural scene. Gardening or even being in a garden is a powerful restorative for the body and spirit. I have not done any long-term studies on this topic, but I know it to be true for me. Being one with nature, watching plants grow and thrive; eating great food fresh from the garden, listening to a babbling brook or rustling grasses or birds singing cannot help but make us feel better.

As Friends of the Garden continues to seek funding for the Sensory Garden, I am reminded of what gardening, viewing gardens and being in nature can do for all of us. I would love to share the Sensory Garden, Edible Garden/Kitchen Classroom design with you. Together we will make our community a destination for restorative living and wellness.

To find out more about our focus, call me and I will take you through the mission, vision and goals of our organization or visit our website at FriendsOfTheGarden.org.

Nancy Hopkins is president of Friends of the Garden. You can reach her at 417-425-9859, or by e-mail at Info@FriendsOfTheGarden.org.



“If one of their senses is impaired, like their sight, they can still smell, touch and taste. If their hearing is impaired, they can see, smell and touch. I want to support this. It is my passion.”

– Bettine Clemen

New and renewing* members, memorials, tributes, garden donations

Memberships

Allen, Teresa*
Antley, Diana
Atterbury, Will
Baird, Rob & Sally*
Behle, Elizabeth*
Beintema, Georgeanne*
Bender, Harold & Lee Ann*
Bennett, Eleanor L.*
Boner, Linda
Bontrager, Mardell*
Borja, Remedios*
Bowen, Colin
Boyer, Martin & Cheryl*
Braswell, Cheryl*
Breaux, Carol*
Brehmer, Marilyn K*
Brill, Lorene & Wilbur*
Brooks, Mike & Martha
Brown, Maria
Buckner, Joann
Buckner, Joann
Burton, David*
Carr, Denise & Ken*
Carter, Dr. Elaine*
Chaffee, Jenny
Chilton, Sue
Church, Breita*
Claxton, James & Nancy*
Cooper, William*
Copeland, Maxine*
Corbett, Patsy*
Coverdell, Ron & Elizabeth*
Cravens, Adalyn*
Crigger, Judy & Dwaine*
Danderson, Frankie & Jo
Davis, Aaron
DeRubeis, Sharon*
Edwards, Becky & Gale
FGCM SW District*
Flanagan, Tom & Judy*
Frederick, Don & Angie*
Fry, Mary Quinn*
Funk, Lonnie & Leslie*
Getty, Gerald A.*

Gintz, Stephen & Anna*
Grayless, Jeff*
Grice, Jr., George*
Guttfro, Harry & Joyce*
Hackeson, Debbi*
Hageman, Win*
Hall, Phillip & Barbara*
Hamilton, Jaqulyn*
Harris, Carolyn*
Harris, Marjorie*
Harstick, Chris*
Haverland, Carole
Hilton, Dorothy*
Holmes, Mary Lynn*
Hom, Susan
Horton, Clara*
Huff, June & Jay*
Hunter, Kathy*
Huston, Sandra & Jerry*
Iler, Anne & Steve*
Jaekley, Jeff & Lynn*
Jenkins, Max & Peggy*
Johnson, Pam*
Jones, Michael & Carolyn
Jones, Michael & Carolyn
Jones, Robert*
Kelly, Margaret & Clark*
King, Thomas*
Knauer, Kelly & Louise*
Kohr, Julie & Michael*
Kristi Kittleson & Tom Cornett*
Kufahl, Kathryn*
Lackey, Laura
Lamb-Rosa, Jessica
Langford, Leo
Lankard, Sylvia & Carl*
Larson, Larry*
Laymon, Walter
Lee, Peggy Day*
Lejeune, Wendell*
Loven, Regina*
Manis, Dargy & Tanya*
Manis, Danny & Tanya*
Marafino, Chris & Gayla*
Mauldin, Jim*

McWilliams, Janet*
Medlin, Donna*
Miller, Debra*
Miller, Fred & Dorothy*
Moore, Gaylord & Beverly*
Moreland, Shawn*
Morris, Ann*
Myron Royce Gardens, Inc.*
Nave, Darleen*
Neil, Louise*
Nickels, Gus & Glyna*
Noble, Keith & Joyce*
O'Brien, Jim & Barbara*
Parish, Tom & Beverly*
Parrish, Stan & Susan*
Perry, Mark & Brenda*
Peterson, Rita Faye
Phelps, Harry*
Placzek, Ellen*
Platz, Cynthia
Porterfield, Coy & Audrey*
Putman, Bryon & Linda*
Pyle, Claud & Joyce*
Reichert, Janeth*
Remelius, Ken & Bunny
Robbins, Tim & Jessica*
Sammon, Elizabeth*
Santer, Richard & Ruth*
Schirmer, Carolyn*
Schroff, Grace
Schubert, Anne*
Schwab, Jane*
Schweitzer, Steve & Paula*
Shadwick, Stephanie
Shook, Betty*
Simpkins, Wanda*
Simpson, Matthew & Teresa*
Skibiski, Jeanie & Kevin*
Spindler, Patsy*
St. Cin, Ed
Tarrasch, David & Jeanne*
Thurman, Dorothy*
Tilley, Josette & Mike*
Touhey, Terry Ann*
Tourville, Liz

Tucker, George & Jan*
Tyndall, Laura
Tyndall, Vincent & Constance*
Vise, Sidney & Ilga*
Wachter, Ron & Sheryl*
Wagoner, Nancy & William*
Ware, Alan & Pat*
Webb, Mark & Patricia
Weingarten, Erica*
Weirde, David & Glenda*
Widman, Judith*
Williams, Gee, Jim Stiles*
Williams, Rita*
Wilson, Bonnie & Bill*
Wilson, Randy & Marge*
Wylie, Iris*

Kellner, Ben & Casey Jo
Parker, Heather
Phelps, Harry
Santer, Richard & Ruth
White, Tuell & Marilyn
Shrub Purchasers
Jones, Kathy

Tree Purchasers

Anderson, Laura
Deaver, Gary

Bettine Clemen Concert

Atkinson, Eric & Elaine
Campbell, Jeanine
Cardwell, Dan & Susan
Childress, Robert & Jan
Freeman, George & Nancy
Holloway, Avis & Wallace
Horton, Jeri
St. Clair, Barbara & William

Bettine Clemen Donors

Bakerink, Lisa & Randy
Hopkins, Nancy & Young, Todd

Butterfly Festival Vendors

Entertaining Sales
Lorenz, Diana
Parents' Cooperative Preschool, Inc.
Rose, Farah
Wilson, Angela

Butterfly Festival Donations

Chipotle Mexican Grill
HyVee Food Stores
Ozark Screen Printing
Parker, Heather
Springfield Music

Gift Membership Donors

Cardwell, Dan & Susan
Coale, Bria
DeRubeis, Sharon
Freeman, George & Nancy
Tucker, George & Jan

Gift Membership Recipients

Cardwell, John
Digirolamo, MaryFrances
Jeffries, Judy
Nicholson, Cathy
Shadwick, Sara
Temple, Skye
Tucker, Johnny

Bricks

Hoepker, Kevin
Beezley, Carla & Robert
Thurman, Susie
Langford, Leo
Buckner, Joann
Deaver, Gary
Jones, Kathy

*Since the last newsletter. If you see an error, omission or correction, please bring it to our immediate attention at News@FriendsOfGarden.org.

Volunteering in Japanese Stroll Garden brings a time for meditation

Feedback:



One of the promises given to those who continue to meditate is a focused mind. I would expect an employer would appreciate having a focused, on task employee. I have been grateful for this.

— Janice Murrell

It is an honor to volunteer in the Japanese Stroll Garden. I see it as a time to meditate, as I meander working on the candling of the black pines, or spreading nutrient, rich, mulch around the multitude of various shrubs. I hear the geese conversing with each other, and whoever may be entering their space. The fin of a koi fish, breaking the glassy surface of the calm pool of water, as it glides past. A time of slowing down...walking, gratefully meditating on the pleasures of being alive, and healthy, that I have a strong heart, and the ability to walk, to see, and hear.

Meditating can be a time of revealing the mysteries of who we are, what action or non-action, are we to take in life's circumstances, and a time of introspection. It is knowing that I, as each individual, are not restricted in his, or her thoughts, words, or actions that have an affect on all levels of creation. Meditating is a time of the silent mind that can carry into your everyday life no worries, no desires, and no tensions. You can return to these concerns whenever you want with a clearer, calmer insight.

I enjoy my time at the Japanese Garden. Whether I am basking in the sun, removing misplaced plants, traditionally known as "weeds" to most, sitting silently on the wooden slats in the shade of the teahouse, or on one of the concrete slabs in the meditation garden proper, I am hooked on meditation. Meditation has been a passion of mine since I was introduced to meditating in 1992. "Where has this wonderful tool of life been?" I asked myself, knowing the time is always right whenever it presents itself, to anyone at any age, to learn to meditate.

One of the promises given to those who continue to meditate is a focused mind. I would expect an employer would appreciate having a focused, on task employee. I have been grateful for this. I am in the present moment much more than I have ever been. My chosen profession has been that of a Registered Nurse. I was first working with adults on cardiac step-down units and in intensive care; later with children in a psychiatric unit. Dispensing medications was part of my responsibilities. You may or may not be aware of the increasing medication errors made by physicians, and nurses in hospitals everyday, but some errors can be deadly, all are avoidable. As a result of my excellent record, a medication review team whose task was looking into prevention of such errors invited me to participate with them. They asked, "What do I do that is different and works?" Following the five basic rules drilled into me concerning medication administration, making sure I gave the right medication, at the right time, the right dose, right route (by mouth or injection) to the right patient, helped me be accurate in dispensing medications. However, I attribute my ability to focus, remain calm, and remain on task, as the primary reason for my accuracy; these are skills gained through meditation over the years.

The tool of meditation is given and its many gifts are imparted but will one have the patience to continue to meditate? I will continue to gratefully, and meditatively, stroll through the Japanese garden as part of my meditation practice.

Janice Murrell, R.N.
Springfield



A pair of young craftsmen work on a canoe paddle during the Lifestyle Exposition Sept. 15-16 at the Gray-Campbell Farmstead. The annual event demonstrates pioneer skills in a variety of disciplines from woodworking to cooking, fiddle

playing, Celtic Dance, lace-making and more. The 'Saving Liberty' Committee is raising necessary funds to add a one-room school to the complex of buildings in Nathanael Greene Park in the Springfield Botanical Gardens.

Grow With Us! Become a Friend of the Garden

We're individuals & families who support the Botanical Center & Gardens in its mission to provide outstanding botanical, horticultural and environmental education opportunities for people of all ages. Anyone with an interest or appreciation in nature who wishes to support

the progress of the gardens is encouraged to join. Your interest in being a member is the first step in making a lasting difference in the ongoing development of the Botanical Center & Gardens. As a member, you're a partner in the future of the gardens.

membership levels

- ☐ \$ 500 Benefactor
- ☐ \$ 250 Patron
- ☐ \$ 100 Sponsor
- ☐ \$ 50 Contributor
- ☐ \$ 25 Friend

renewal

- ☐ additional donation

\$ _____

gift memberships available at all levels

- ☐ wedding ☐ birthday ☐ in honor of *
- ☐ holiday ☐ anniversary ☐ other *

corporate sponsorship

- ☐ \$1,000 Platinum
- ☐ \$ 500 Gold
- ☐ \$ 250 Silver
- ☐ \$ 150 Bronze

lasting dedications

- ☐ \$800 Four Foot Bench*
- ☐ \$500 Tree* ☐ \$250 Shrub*
- ☐ \$100 Engraved Brick, Butterfly House*
- ☐ \$ 50 Engraved Brick, White Garden*

*specify person or event, email for details

receive newsletter via: ☐ Snail Mail ☐ Email



I'd Love to Volunteer!

- ☐ in the gardens
- ☐ in the FOG office
- ☐ festivals & events: FOG booth
- ☐ festivals & events: activities
- ☐ children's activities
- ☐ butterfly house docent
- ☐ marketing & development
- ☐ hardscaping & construction
- ☐ tell me what you need!
- ☐ I have a special talent:

Member Benefits:

- Friends of the Garden Membership Card
- Free Season Admission for Two into the Mizumoto Japanese Stroll Garden* · Fully Tax Deductible (*excluding the Japanese Fall Festival)
- Volunteer Opportunities · Ongoing Learning
- Subscription to the FOG Quarterly Newsletter
- Special Invitations to FOG Garden Events
- Form Lasting Friendships · Give Back to Your Community
- 10% off at Smiling Sun on any plant life
- Events: Butterfly Festival, Monarch Tagging, Santa & Friends
- 10% off at O'Quinn's Water Gardens on plants & fish
- FOG members have access to a wide array of botanical gardens, arboreta, and conservatories throughout North America offering special admission privileges and many other benefits.

http://www.ahs.org/events/reciprocal_events.htm

name _____

address _____

city _____ state _____ zip _____

email _____ phone _____

03.2012

gift recipient *

address _____

city _____ state _____ zip _____

email _____ phone _____

Mail & Payable to: Friends of the Garden | PO Box 8566 | Springfield MO 65801

2/2011

29/7

What's new (and very old) in the gardens:

'Saving Liberty' School needs a helping hand to move the school to Gray-Camp Farmstead

The 'Saving Liberty' Committee of the Gray-Campbell Farmstead Board is raising funds to move the one-room Liberty School to Nathanael Greene/Close Memorial Park for restoration and preservation. Built in the 1880s, the school was next to Liberty Baptist Church, organized in 1845 north of Springfield on the Sac River. So far, \$10,000 has been raised of approximately \$50,000 needed. A fund has been established at the Community Foundation of the Ozarks to receive tax deductible contributions for the project. For more information, please call Norma Tolbert, project chair, at 417-833-2352.



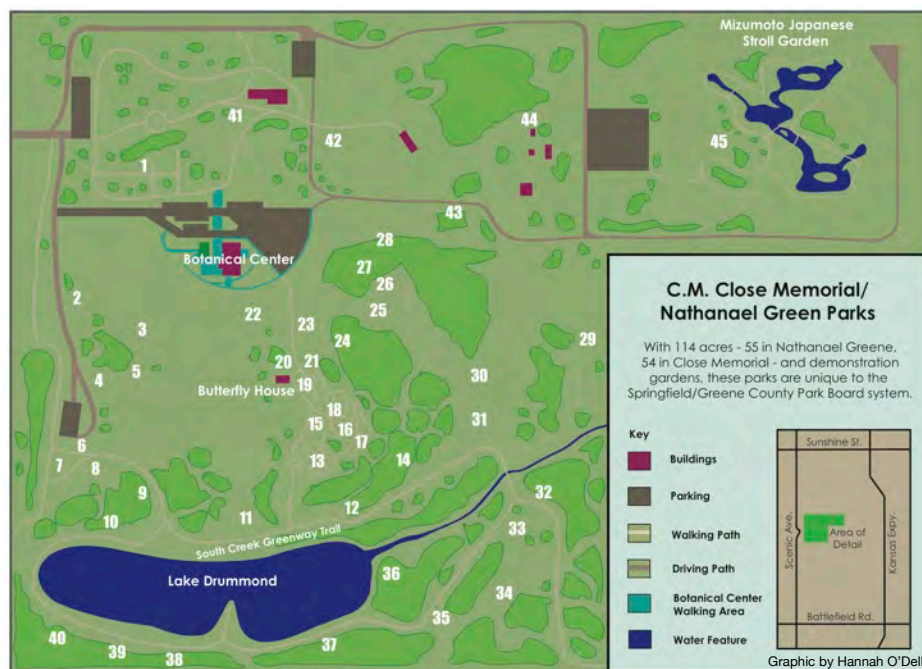
The log cabin above includes a functional pioneer kitchen. Above, Marion Jones performs on the accordion for a young fan.

Upcoming Events*

- **Sept. 29:** National Public Lands Day; volunteering opportunity.
- **Sept. 29:** 2 p.m.; Monarch Tagging Event at the Butterfly House.
- **Sept. 29:** 1 p.m.; Plant Orb Workshop; create your own hanging garden with moss and twine, \$10.
- **Oct. 4:** 5:30 p.m.; Japanese Garden Group meets.
- **Oct 7:** 11:30 a.m.-1:30 p.m.; Friends of the Garden Membership Picnic on the deck.
- **Oct. 9:** 9 a.m.; FOG Marketing/ Communications Committee meets.
- **Oct. 11:** 5 p.m.; Friends of the Garden board meets.
- **Nov. 1:** 5:30 p.m.; Japanese Garden Group meets.

*Friends of the Garden is pleased to publicize timely events (mostly in the Botanical Center) as well as gardening events of regional interest. Please sign up for a weekly summary of events and activities by sending us your e-mail address. E-mail us at News@FriendsoftheGarden.org, or on Facebook.

Newsletter produced and donated by FOG board member George M. Freeman, editor of GREENE Magazine.us



Guide to the gardens

1. Master Gardener Demonstration Garden
2. Winter Garden
3. Freedom Garden*
4. Viburnum Garden
5. Flowering Shrub Garden
6. Entrance Garden
7. Rose Garden
8. White Garden
9. Hosta Garden
10. Sensory Garden*
11. English Garden
12. Victorian Garden*
13. Ornamental Grass Garden
14. Terrace Garden*
15. Iris Garden
16. Daylily Garden
17. Peony Garden
18. Lily Garden
19. Butterfly Garden
20. Columbine Garden
21. Wildflower Garden
22. Rain Garden
23. Bulb & Tuber Garden*
24. Native Shrub Garden
25. Magnolia Garden*
26. Japanese Maple Garden*
27. Cercis (Redbud) Garden
28. Dogwood Garden
29. Kickapoo Edge Prairie Garden
30. Flowering Tree Garden*
31. Pendula Garden*
32. Rock Garden*
33. Dwarf Conifer Garden
34. Conifer Garden*
35. Perennial Garden*
36. Wetland Garden*
37. Woodland Garden
38. Fragrant Garden*
39. Fern Garden*
40. Secret Garden*
41. Federated Garden Clubs Garden
42. Biblical Garden*
43. Azalea Garden
44. Heritage Garden
45. Mizumoto Japanese Stroll Garden

*Planned gardens

Take the right turn to get to the gardens

Visitors to Nathanael Greene/Close Memorial Park and Arboretum describe the experience as an unexpected adventure. But of course you've got to get there to enjoy it, and that can be a bit challenging. This map, which includes directions to the parks (inset map) as well directions for convenient parking, will help. If you are new to the gardens, you can locate each garden numerically at right. Those with an asterisk* are planned but not yet under construction. A "Guide By Cell" tour of the garden parks is now available by calling 417-213-3016. After a brief introduction, callers may dial a garden code on each sign followed by the # key (For example, 35# is the Hosta Garden) for information on various gardens. Introductions for every garden, including the Ornamental Grass Garden (39#) have been recorded, with signage in place listing the numbers for each garden.